

Second Quarter 2024 Results

August 1, 2024



AGNICO EAGLE



Forward-Looking Statements

The information in this presentation has been prepared as at July 31, 2024. Certain statements contained in this presentation constitute "forward-looking statements" within the meaning of the United States Private Securities Litigation Reform Act of 1995 and "forward-looking information" under the provisions of Canadian provincial securities laws and are referred to herein as "forward-looking statements". All statements, other than statements of historical fact, that address circumstances, events, activities or developments that could, or may or will occur are forward-looking statements. When used in this presentation, the words "achieve", "aim", "anticipate", "commit", "could", "estimate", "expect", "forecast", "future", "guide", "plan", "potential", "schedule", "target", "track", "will", and similar expressions are intended to identify forward-looking statements. Such statements include the Company's forward-looking guidance, including metal production, estimated ore grades, recovery rates, project timelines, drilling targets or results, life of mine estimates, total cash costs per ounce, AISC per ounce, minesite costs per tonne, other expenses and cash flows; the potential for additional gold production at the Company's sites; the estimated timing and conclusions of the Company's studies and evaluations; the methods by which ore will be extracted or processed; the Company's expansion plans at Detour Lake, Meliadine Phase 2, Amaruq underground, Upper Beaver and Odyssey, including the timing, funding, completion and commissioning thereof and the commencement of production therefrom; the Company's plans at Hope Bay and San Nicolás; statements concerning other expansion projects, recovery rates, mill throughput, optimization efforts and projected exploration, including costs and other estimates upon which such projections are based; timing and amounts of capital expenditures, other expenditures and other cash needs, and expectations as to the funding thereof; estimates of future mineral reserves, mineral resources, mineral production and sales; the projected development of certain ore deposits, including estimates of exploration, development and production and other capital costs and estimates of the timing of such exploration, development and production or decisions with respect to such exploration, development and production; anticipated cost inflation and its effect on the Company's costs and results; estimates of mineral reserves and mineral resources and the effect of drill results and studies on future mineral reserves and mineral resources; the Company's ability to obtain the necessary permits and authorizations in connection with its proposed or current exploration, development and mining operations, including at Meliadine, Upper Beaver and San Nicolás, and the anticipated timing thereof; future exploration; the anticipated timing of events with respect to the Company's mine sites; the Company's plans and strategies with respect to climate change and greenhouse gas emissions reductions; the sufficiency of the Company's cash resources; the Company's plans with respect to hedging and the effectiveness of its hedging strategies; future activity with respect to the Company's unsecured revolving bank credit facility, the term loan facility and other indebtedness; future dividend amounts, record dates, payment dates and discount rates under the dividend reinvestment plan; plans with respect to offering securities pursuant to the base shelf prospectus; plans with respect to activity under the NCIB; and anticipated trends with respect to the Company's operations, exploration and the funding thereof. Such statements reflect the Company's views as at the date of this presentation and are subject to certain risks, uncertainties and assumptions, and undue reliance should not be placed on such statements. Forward-looking statements are necessarily based upon a number of factors and assumptions that, while considered reasonable by Agnico Eagle as of the date of such statements, are inherently subject to significant business, economic and competitive uncertainties and contingencies. The material factors and assumptions used in the preparation of the forward-looking statements contained herein, which may prove to be incorrect, include, but are not limited to, the assumptions set forth herein and in management's discussion and analysis ("MD&A") and the Company's Annual Information Form ("AIF") for the year ended December 31, 2023 filed with Canadian securities regulators and that are included in its Annual Report on Form 40-F for the year ended December 31, 2023 ("Form 40-F") filed with the U.S. Securities and Exchange Commission (the "SEC") as well as: that there are no significant disruptions affecting operations; that production, permitting, development, expansion and the ramp-up of operations at each of Agnico Eagle's properties proceeds on a basis consistent with current expectations and plans; that the relevant metal prices, foreign exchange rates and prices for key mining and construction inputs (including labour and electricity) will be consistent with Agnico Eagle's expectations; that Agnico Eagle's current estimates of mineral reserves, mineral resources, mineral grades and metal recovery are accurate; that there are no material delays in the timing for completion of ongoing growth projects; that seismic activity at the Company's operations at LaRonde, Goldex, Fosterville and other properties is as expected by the Company and that the Company's efforts to mitigate its effect on mining operations, including with respect to community relations, are successful; that the Company's current plans to address climate change and reduce greenhouse gas emissions are successful; that the Company's current plans to optimize production are successful; that there are no material variations in the current tax and regulatory environment; that governments, the Company or others do not take measures in response to pandemics or other health emergencies or otherwise that, individually or in the aggregate, materially affect the Company's ability to operate its business or its productivity; and that measures taken relating to, or other effects of, pandemics or other health emergencies do not affect the Company's ability to obtain necessary supplies and deliver them to its mine sites. Many factors, known and unknown, could cause the actual results to be materially different from those expressed or implied by such forward-looking statements. Such risks include, but are not limited to: the volatility of prices of gold and other metals; uncertainty of mineral reserves, mineral resources, mineral grades and mineral recovery estimates; uncertainty of future production, project development, capital expenditures and other costs; foreign exchange rate fluctuations; inflationary pressures; financing of additional capital requirements; cost of exploration and development programs; seismic activity at the Company's operations, including at LaRonde, Goldex and Fosterville; mining risks; community protests, including by Indigenous groups; risks associated with foreign operations; governmental and environmental regulation; the volatility of the Company's stock price; risks associated with the Company's currency, fuel and by-product metal derivative strategies; the current interest rate environment; the potential for major economies to encounter a slowdown in economic activity or a recession; the potential for increased conflict or hostilities in various regions, including Europe and the Middle East; and the extent and manner of communicable diseases or outbreaks, and measures taken by governments, the Company or others to attempt to mitigate the spread thereof may directly or indirectly affect the Company. For a more detailed discussion of such risks and other factors that may affect the Company's ability to achieve the expectations set forth in the forward-looking statements contained in this presentation, see the AIF and MD&A filed on SEDAR+ at www.sedarplus.ca and included in the Form 40-F filed on EDGAR at www.sec.gov, as well as the Company's other filings with the Canadian securities regulators and the SEC. Other than as required by law, the Company does not intend, and does not assume any obligation, to update these forward-looking statements.

Notes Regarding Certain Climate Change and GHG Disclosure

This presentation includes information with respect to climate change plans and strategies and GHG emissions reductions plans and strategies that has been prepared for the purpose of assisting the Company's stakeholders in understanding certain key elements of the Company's climate and other sustainability-related objectives, targets and risks and may not be suitable or appropriate for other purposes. This information has been provided from a different perspective and in more detail than is required to be included in mandatory securities filings. None of the information in this presentation relating to climate change plans and strategies and GHG emissions reductions plans and strategies has been audited. Due to the inherent uncertainty and limitations in measuring GHG emissions and intensity, energy consumption and composition, project type GHG reduction potential and likelihood, and climate-related risks and opportunities under the calculation methodologies used in the preparation of these and other data and metrics, all such information in this presentation are estimates. There may also be differences in the manner that other parties calculate, report, test or substantiate such information compared to the Company, which means that the information reported by other parties may not be comparable to that reported by the Company. Further, as climate and other sustainability-related reporting evolves, there could be changes to the market practices, taxonomies, methodologies, criteria and standards that are used to classify, measure, test, substantiate and report on such matters, so this information may not be comparable to information prepared or reported by the Company at a different time. However, all information in this presentation concerning the Company's climate and other sustainability-related objectives and impacts are based on what the Company believes to be adequate and proper substantiation in accordance with internationally recognized methodology.

Further Information – For further details on Agnico Eagle's second quarter 2024 results, please see the Company's news release dated July 31, 2024.

Front Cover – Agnico Eagle's Detour Lake mine located in the Abitibi region of northwestern Ontario, taken in the second quarter of 2024.

Second Quarter 2024 Highlights

Consistent and Reliable Operational and Cost Performance



Upper Beaver project



Barnat open pit at the Canadian Malartic complex



LaRonde environmental work

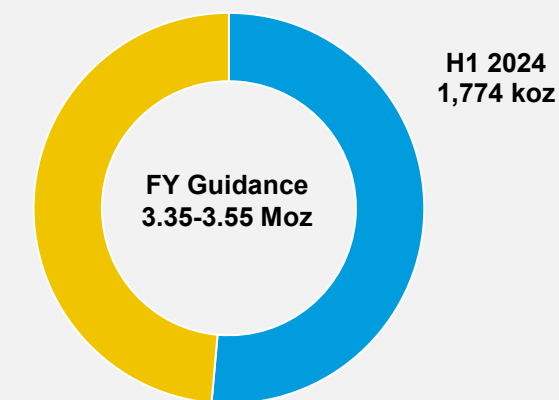


Mine safety excellence award ceremony

- ▶ Continued strong operational performance while demonstrating cost control
- ▶ Strengthened investment grade balance sheet with record free cash flow
- ▶ Continued focus on shareholder returns
 - Quarterly dividend of \$0.40/share and quarterly share buybacks of \$50M
- ▶ Approval of \$50M supplemental exploration budget
- ▶ Upper Beaver internal evaluation yielded positive risk-adjusted returns
- ▶ 2023 Climate Action Report and inaugural Reconciliation Action Plan released

¹ These are non-GAAP measures, see *Notes to Investors* in this presentation

Well positioned to achieve 2024 gold production and cost guidance

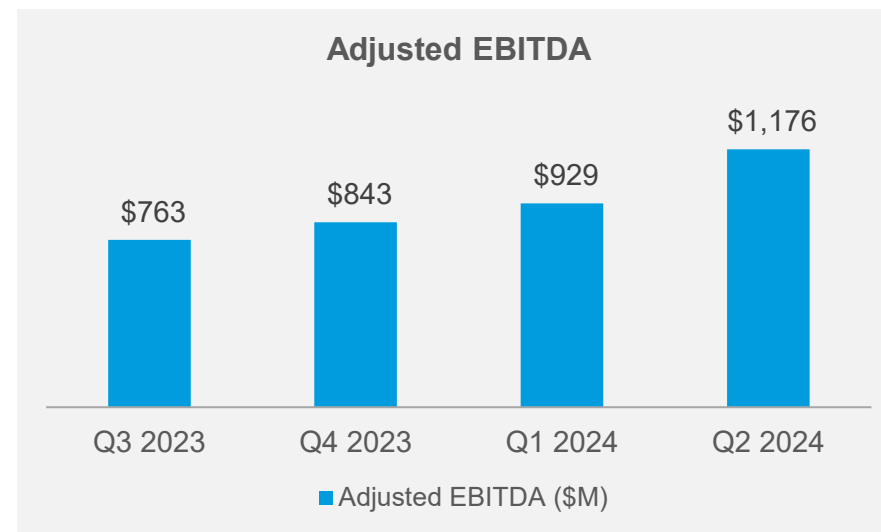
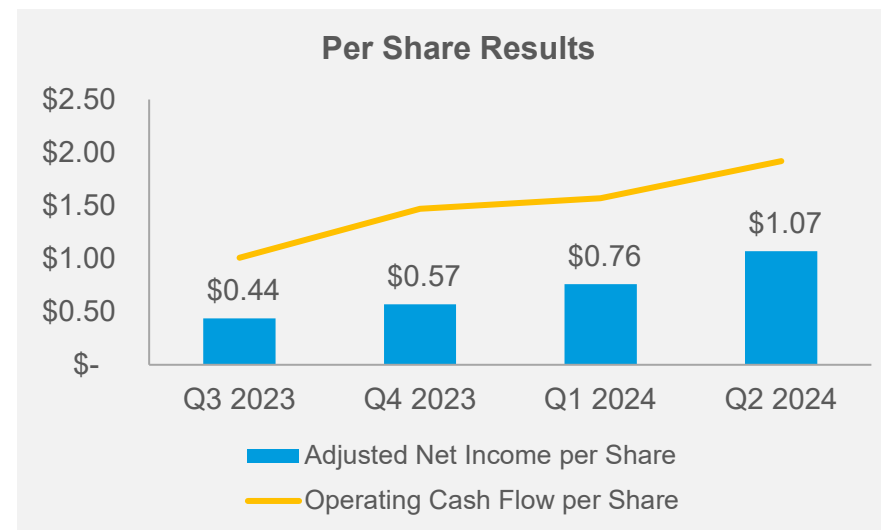


FY Guidance
Total Cash Costs¹ \$875 - \$925/oz
AISC¹ \$1,200 - \$1,250/oz

Financial Highlights

Third Consecutive Quarter of Record Free Cash Flow

	Q2 2024	Q2 2023	Q2 2024 YTD	Q2 2023 YTD
Realized Gold Price ¹ (\$/oz)	\$ 2,342	\$ 1,975	\$ 2,202	\$ 1,935
Gold Sales (koz)	874	859	1,753	1,646
(in millions)				
Revenues	\$ 2,077	\$ 1,718	\$ 3,906	\$ 3,228
Net Income	\$ 472	\$ 324	\$ 819	\$ 2,141
Adjusted Net Income ²	\$ 535	\$ 319	\$ 913	\$ 591
EBITDA ²	\$ 1,123	\$ 883	\$ 2,006	\$ 3,156
Adjusted EBITDA ²	\$ 1,176	\$ 885	\$ 2,105	\$ 1,626
Cash Provided by Operating Activities	\$ 961	\$ 722	\$ 1,745	\$ 1,372
Capital Expenditures ³	\$ 407	\$ 416	\$ 779	\$ 758
Free Cash Flow ²	\$ 557	\$ 298	\$ 953	\$ 563
(basic shares outstanding)				
Net Income per share	\$ 0.95	\$ 0.66	\$ 1.64	\$ 4.45
Adjusted Net Income per share ²	\$ 1.07	\$ 0.65	\$ 1.83	\$ 1.23
Operating Cash Flow per share ²	\$ 1.92	\$ 1.46	\$ 3.50	\$ 2.85



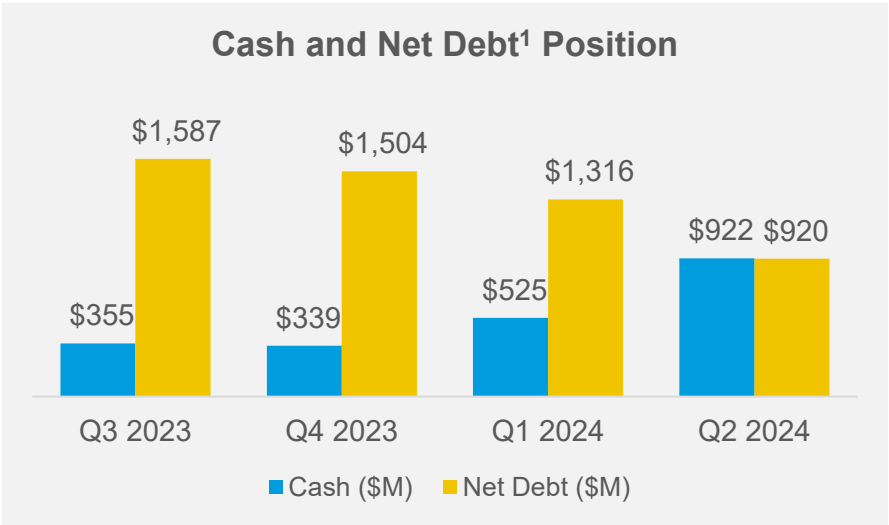
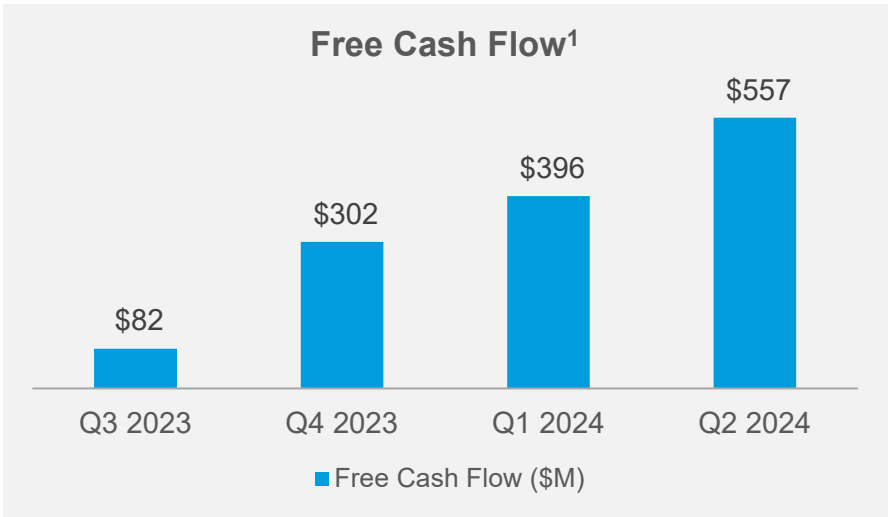
¹ Realized gold price is calculated as gold revenues from mining operations divided by the number of ounces sold

² These are non-GAAP measures, see *Notes to Investors* in this presentation

³ Includes capitalized exploration

Balance Sheet Strength and Financial Flexibility

Returned ~49% of Free Cash Flow^{1,2} to Shareholders through the Dividend and NCIB in H1 2024



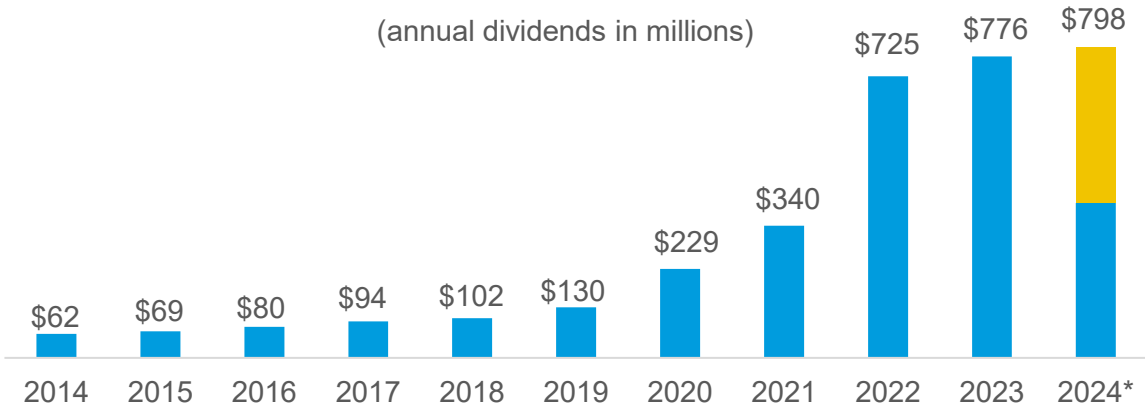
¹ These are non-GAAP measures, see *Notes to Investors* in this presentation

² Free cash flow is calculated including the effect of changes in non-cash working capital balances; excluding the effect of changes in non-cash working capital balances equates to a return of ~48%

Strengthening Financial Position

- Strong liquidity – \$922M cash and \$2B undrawn credit facility
- Current debt of \$740M and long-term debt of \$1,102M as at June 30, 2024
- Significant reduction in net debt¹ to \$920M as at June 30, 2024
- Debt repayments in July 2024:
 - \$100M on senior notes on maturity
 - \$150M accelerated payment on \$600M term loan facility

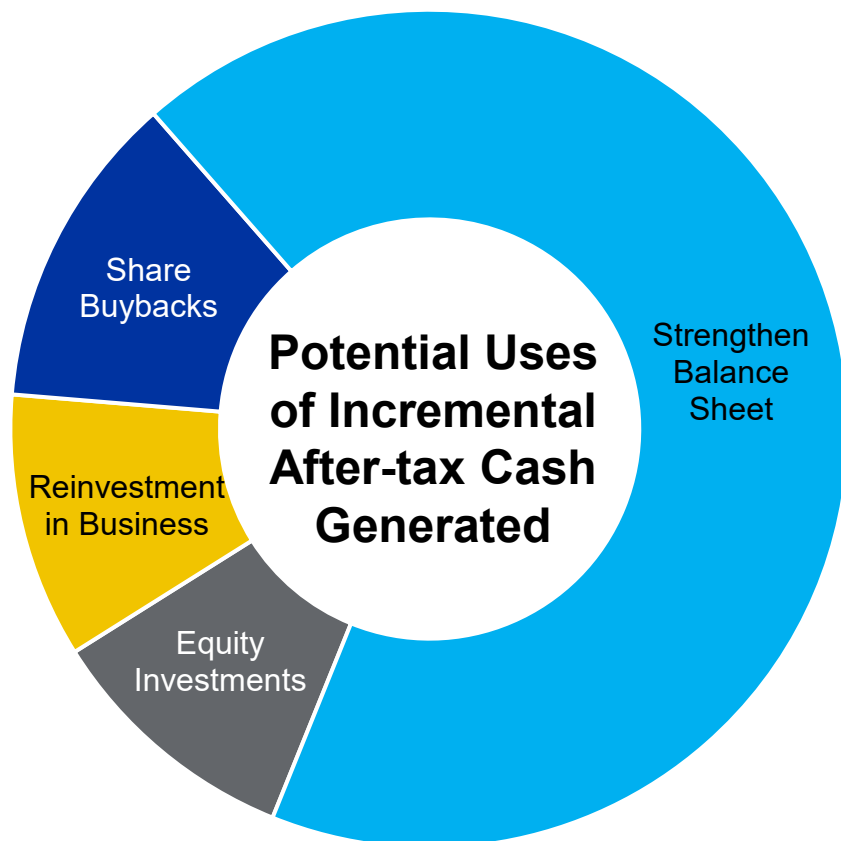
An Attractive Sustainable Dividend



* Dividend annualized for 2024 based on H1 2024 actuals; Q3 and Q4 dividends assume consistent payment as per Q2; Q3 and Q4 dividends have not yet been declared or approved

Maintaining Capital Discipline with Incremental Cash Generated

Over \$1B¹ in Estimated Incremental After-tax Cash could be Generated in FY2024



H1 2024 Actual

- \$583M increase in cash balance
- \$70M common shares repurchased under NCIB
- \$41M in equity investments

H2 2024 Approved Uses of Cash

- \$100M repayment of senior notes
- \$150M accelerated payment on term loan facility
- \$50M supplemental exploration budget
- \$68M phased investment in pipeline projects
- \$73M in equity investments
- Opportunistic repurchase of common shares under NCIB

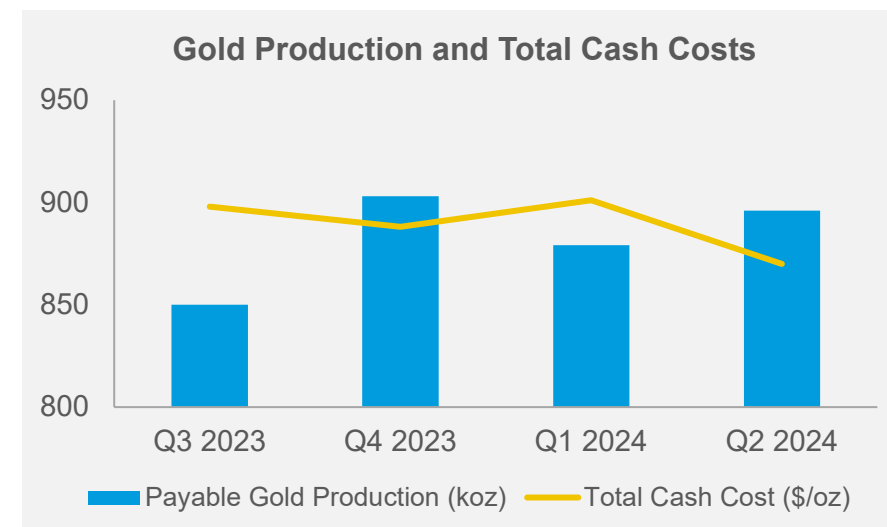
¹ Over \$1B of incremental after-tax cash generated for the full year 2024 is estimated by calculating: (i) the difference between H1 2024 realized average gold price/oz of \$2,202/oz and \$1,800/oz, less the impact of increased royalties/oz to actual production ounces in H1 2024, plus (ii) the difference between the spot gold price of ~\$2,400/oz and \$1,800/oz, less the impact of increased royalties/oz on H2 2024 production ounces to mid-point of guidance, less applicable cash taxes.

Operational Highlights

Strong Operational Performance through H1 2024

	Q2 2024				Q2 2024 YTD			
	Gold Production (koz)	Production Costs (\$/oz)	Total Cash Costs ¹ (\$/oz)	Operating Margin ¹ (\$ millions)	Gold Production (koz)	Production Costs (\$/oz)	Total Cash Costs ¹ (\$/oz)	Operating Margin ¹ (\$ millions)
Total Quebec	297	\$812	\$855	\$430	587	\$845	\$883	\$763
Total Ontario	232	\$738	\$803	\$342	451	\$778	\$812	\$644
Total Nunavut	215	\$972	\$910	\$320	439	\$950	\$925	\$564
Total Finland	56	\$1,033	\$1,020	\$76	110	\$1,057	\$1,044	\$131
Total Australia	66	\$558	\$608	\$108	123	\$575	\$575	\$196
Total Mexico	30	\$1,882	\$1,568	\$29	65	\$1,620	\$1,466	\$53
Consolidated AEM	896	\$862	\$870	\$1,305	1,774	\$877	\$885	\$2,351

- In Q2 2024, gold production was led by strong performance at Canadian Malartic, LaRonde and Fosterville
- Continued focus on cost control and optimization with total cash costs at \$870/oz and AISC¹ at \$1,169/oz in Q2 2024
- Record operating margin for the third consecutive quarter



¹ These are non-GAAP measures, see *Notes to Investors* in this presentation

Odyssey Mine – Building a World-Class Asset in a Premier Mining Jurisdiction

Odyssey South

- Record quarterly mining rates and gold production achieved at ~3.8k tpd and 22koz of gold, respectively
- Internal zones continue to provide upside

Ramp development

- Reached third production level of East Gouldie at 832m depth as at June 30
- Development ahead of schedule with potential to accelerate initial production from East Gouldie

Shaft sinking

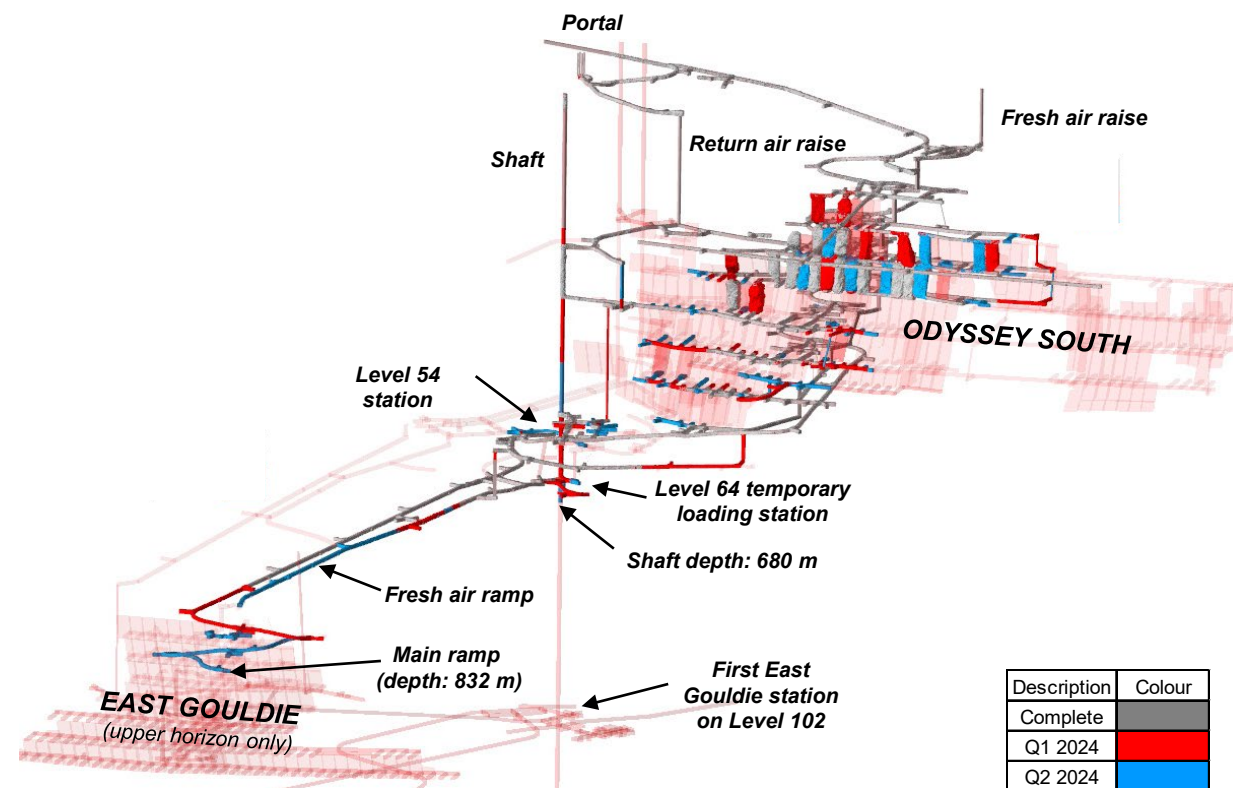
- Advancing well with completion on target for 2027
- Reached depth of 680m as at June 30

Temporary loading pocket at level 64

- Excavation ongoing with construction expected to be initiated in September 2024
- Commissioning expected in Q2 2025

Surface construction

- Progressing as planned with focus on the main hoist building, phase two of the paste plant and the operational complex





Pathway to 1 Million Ounce Producer

- 2024 PEA results demonstrate strong risk-adjusted return on capital¹
 - ~1Moz annually for 14 years beginning 2030
 - NPV of \$886M² with an IRR of 18%
- Enhances production profile, increases profitability and extends mine life
 - Replaces lower grade open pit production with higher grade underground production
 - Accelerates access to highest grade ore
- Leverages existing expertise with bulk underground mining in the Abitibi region
- Lower-risk, disciplined capital approach with brownfield expansion – approved ~\$100M investment over 3 years
- Positive exploration results along the western plunge of the deposit support upside potential

¹ See AEM June 19, 2024 news release for further details

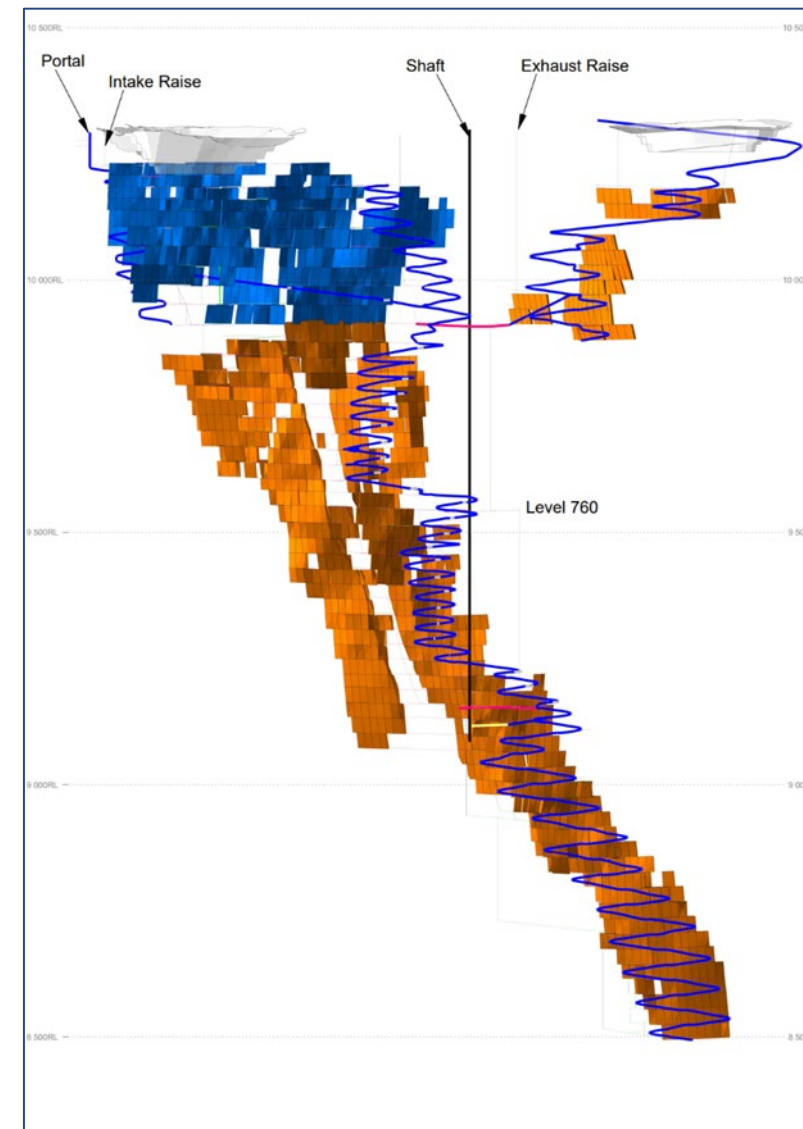
² Au = \$1,900/oz, FX = 1.34 CAD/USD

Upper Beaver – Opportunity to Grow Lower-risk, Profitable Production

Upper Beaver Project Overview¹

Mineable Mineral Resource	23M mt @ 4.01 g/t Au and 0.26% Cu
Total Production	2.8Moz Au / 46kt Cu
Average Annual Production	210koz Au / 3.6kt Cu
Mine Life	13 years
Total Cash Costs	\$592/oz
AISC	\$733/oz
Initial Capital Spend	\$890M

- Solid IRR of ~14%² and NPV ~\$625M² in a premier mining jurisdiction
 - IRR of ~18% and NPV ~\$1.01B at gold price of \$2,300/oz
- Standalone mine/mill concept at 5ktpd throughput
- Synergies with Macassa for technical expertise and workforce
- Phased, measured approach
 - Investment of ~\$200M over 3 years approved (\$50M in 2024)



¹ See AEM July 31, 2024 press release and appendix for further details and breakdown of mineral reserves and mineral resources

² Au = \$1,900/oz, Cu = \$4/lb, FX = 1.34 CAD/USD

Geological Map of KLEB19-452W1

Legend:

- 2024 Planned Open Pit (Yellow)
- 2024 Indicated Mineral Resource (Blue)
- 2024 Inferred Mineral Resource (Light Blue)
- Historic UG mined out (Grey)
- Exploration target area (Red outline)
- Significant 2019 drill hole pierce point Porphyry zone (Red dot)
- Significant 2019 drill hole pierce point Footwall zone (Yellow dot)
- Previously released drill hole pierce points (Black dot)

Map Labels:

- West
- East
- 0 m
- 500 m
- 1000 m
- 1500 m
- Exploration ramp
- Exploration shaft
- Bulk sample

Scale: 0 to 500 metres

Coordinate System: NAD1983 UTM Zone 17N

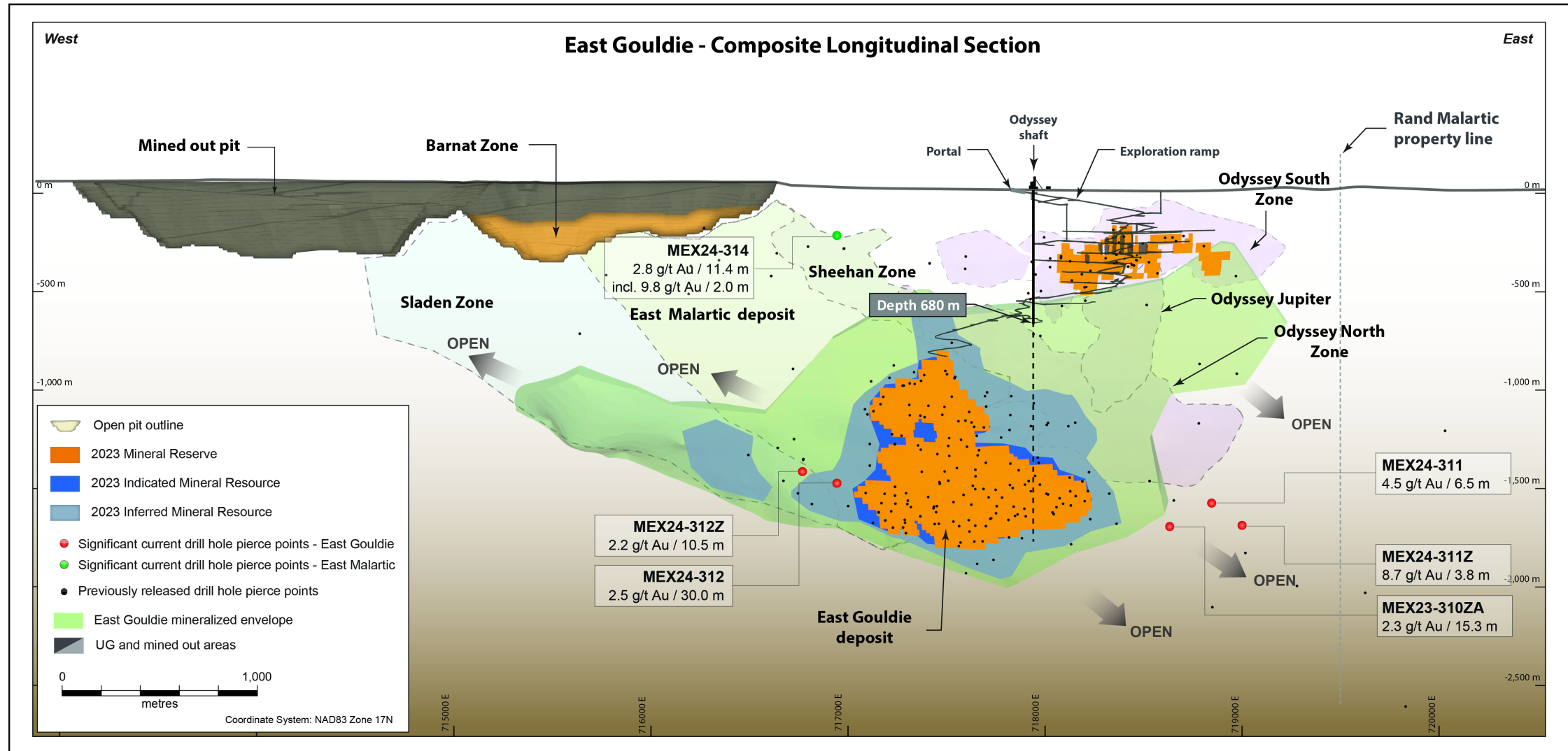
Drill Hole Data:

Drill Hole ID	Grade	Depth (m)
KLEB19-452W1	7.6 g/t Au, 0.36 % Cu	3.4 m
KLEB19-452W1	1.2 g/t Au, 1.39 % Cu	7.1 m

- [illegible]

Q2 2024 Results | 11

Odyssey Mine – Potential to Expand a World-Class Asset



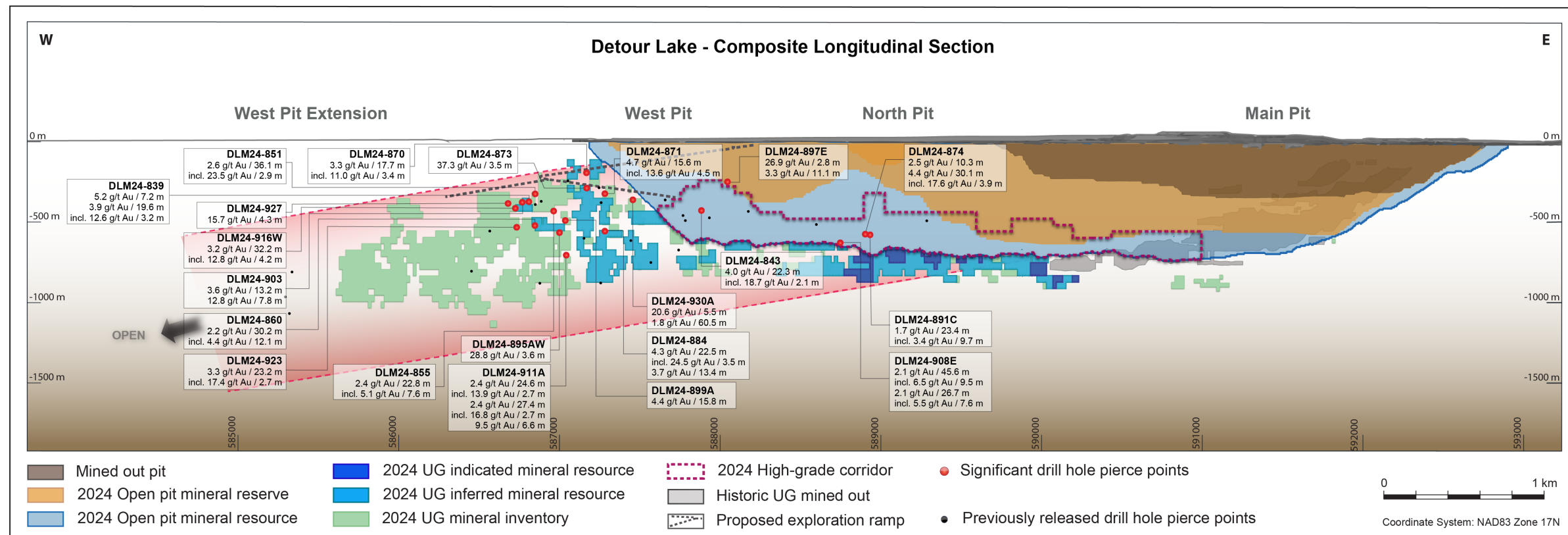
East Gouldie deposit at the Odyssey mine:

Recent exploration drilling continues to return good results in the eastern and western extensions of the East Gouldie deposit

Highlight Intercepts:

- 4.5 g/t gold over 6.5m at 1,571m depth and 800m east of current mineral reserves
- 2.5 g/t gold over 30.0m at 1,473m depth and 100m west of current mineral reserves

Detour Lake – Potential to Expand Underground Mineralization

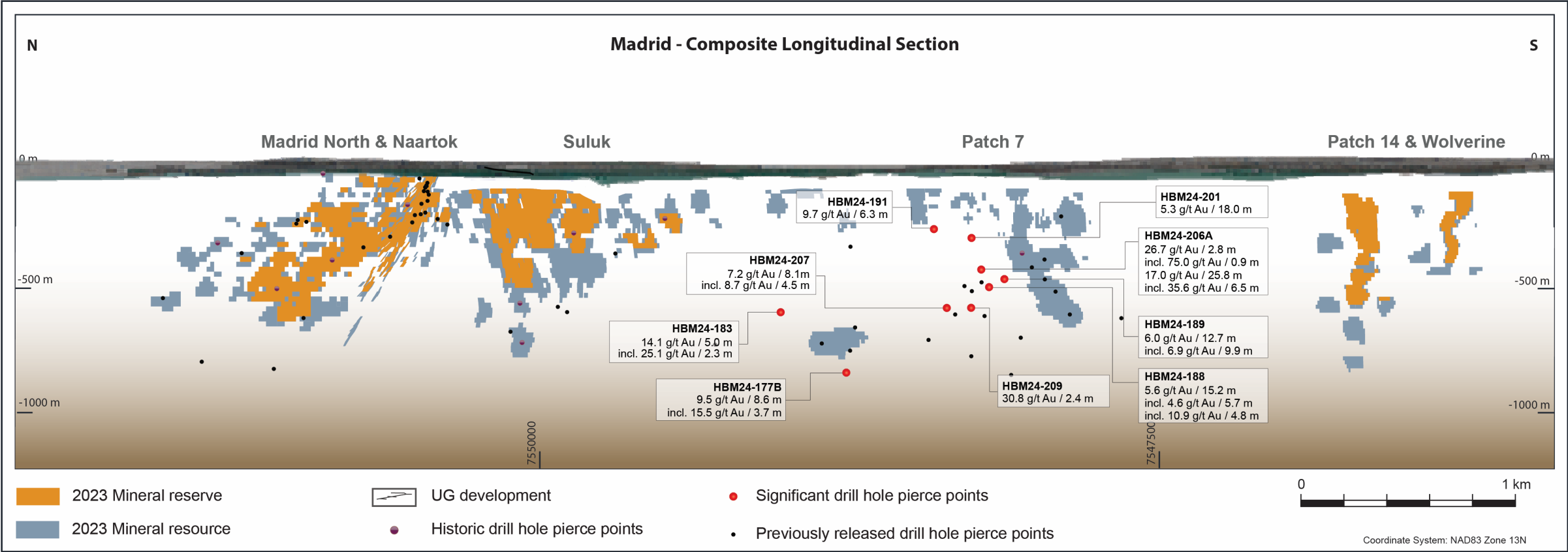


Detour Lake Underground:

Infill drilling into the high-grade corridor at underground depths in the West Pit zone and West Pit Extension continued to confirm the grades and continuity of the mineralized structure

Highlight Intercepts:

- 4.0 g/t gold over 22.3m at 413m depth
- 4.4 g/t gold over 30.1m at 550m depth
- 20.6 g/t gold over 5.5m at 280m depth
- 4.7 g/t gold over 15.6m at 313m depth



Madrid deposit in the Patch 7 zone at Hope Bay

Exploration drilling continued to return excellent results, further confirming the larger thicknesses and higher gold grades in this area compared to historical mineral reserves at the Hope Bay mine

Highlight Intercepts:

- 17.0 g/t gold over 25.8m at 419m depth
- 7.2 g/t gold over 8.1m at 559m depth
- 5.3 g/t gold over 18.0m at 278m depth



Low-Risk Mining Jurisdictions

Multi-mine, multi-decade geologic potential

Multi-decade political stability

Regional focus maintaining a manageable business



Highest Quality Senior Gold Producer

High ESG standards with multi-decade investment horizon

Disciplined capital investments based on knowledge and due diligence

Creating value through the drill bit and technical expertise



Uniquely Positioned

Robust land package in core mining jurisdictions with the unique potential to leverage existing assets

Competitive advantage from over 50 years of operations in Canada

Unique mining expertise in Nunavut



Strong Financial Returns

Emphasis on per share metrics

Strong financial position to fund growth projects, strengthen balance sheet and return capital to shareholders

40 consecutive years of dividend payments

Mineral Reserves and Mineral Resources



Upper Beaver – June 30, 2024 Gold Mineral Reserves and Mineral Resources¹

		MINERAL RESERVES	MINERAL RESOURCES									
As at June 30, 2024		PROVEN & PROBABLE	INDICATED					INFERRED				
MINERALIZED ZONE	Mining Method ²	000 oz Au	000 Tonnes	g/t	000 oz Au	Cu %	000 t Cu	000 Tonnes	g/t	000 oz Au	Cu %	000 t Cu
Upper Beaver	O/P	–	3,326	1.85	198	0.14	5	–	–	–	–	–
Upper Beaver	U/G	–	27,550	3.66	3,242	0.24	66	2,959	4.13	393	0.36	11
Upper Beaver Total		–	30,876	3.47	3,440	0.23	71	2,959	4.13	393	0.36	11

The assumptions used for the mineral resource estimate as at June 30, 2024, were US\$1,750 per ounce of gold, US\$4.00 per pound of copper, an exchange rate of CAD\$1.35 per US\$1.00 and Metallurgical Recoveries of 95% for gold and 83% for copper.

Open pit mineral resources as at June 30, 2024, are reported at a Net Smelter Value cut-off not less than C\$43.49/t.

Underground mineral resources as at June 30, 2024, are reported at a Net Smelter Value cut-off not less than C\$118.17/t.

Mineral reserve and mineral resource estimates for the Upper Beaver project have been approved by Dyane Duquette, P.Geo., Vice-President, Mineral Resources Management, who is a "Qualified Person" for the purposes of NI 43-101.

The forecast parameters surrounding the internal evaluation at the Upper Beaver project were based on a preliminary economic assessment, which is preliminary in nature and includes inferred mineral resources that are too speculative geologically to have economic considerations applied to them that would enable them to be categorized as mineral reserves and there is no certainty that the forecast production amounts or other outcomes will be realized. The basis for the preliminary economic assessment and the qualifications and assumptions made by the qualified persons who undertook the preliminary economic assessment are set out in the AEM July 31, 2024 news release. The impact of the results of the preliminary economic assessment on the results of any pre-feasibility or feasibility study in respect of Upper Beaver are described in the Appendix under "MRMR update for Upper Beaver gold-copper project" in the AEM July 31, 2024 news release.

¹ See AEM July 31, 2024 news release for further details on the mineral reserves and mineral resources for Upper Beaver as at June 30, 2024

² Open Pit ("O/P"), Underground ("U/G")

Detour Lake – March 31, 2024 Gold Mineral Reserves and Mineral Resources¹

		MINERAL RESERVES As at March 31, 2024									
MINERALIZED ZONE		PROVEN			PROBABLE			PROVEN & PROBABLE			
GOLD	Mining Method ²	000 Tonnes	g/t	000 oz Au	000 Tonnes	g/t	000 oz Au	000 Tonnes	g/t	000 oz Au	Recovery % ³
Detour Lake (above 0.5 g/t)	O/P	71,477	1.13	2,593	467,151	0.90	13,563	538,629	0.93	16,156	91.9
Detour Lake (below 0.5 g/t)	O/P	50,174	0.42	684	229,819	0.38	2,832	279,993	0.39	3,516	90.0
Detour Lake Total⁴		121,651	0.84	3,277	696,970	0.73	16,395	818,621	0.75	19,672	

		MINERAL RESOURCES											
		As at March 31, 2024											
MINERALIZED ZONE		MEASURED			INDICATED			MEASURED & INDICATED			INFERRED		
GOLD	Mining Method ²	000 Tonnes	g/t	000 oz Au	000 Tonnes	g/t	000 oz Au	000 Tonnes	g/t	000 oz Au	000 Tonnes	g/t	000 oz Au
Detour Lake	O/P	35,586	1.08	1,235	620,524	0.57	11,412	656,110	0.60	12,647	78,647	1.52	3,850
Detour Lake	U/G	—	—	—	10,008	2.02	652	10,008	2.02	652	56,809	2.04	3,718
Detour Lake zone 58N	U/G	—	—	—	2,868	5.80	534	2,868	5.80	534	973	4.35	136
Detour Lake Total		35,586	1.08	1,235	633,400	0.62	12,598	668,985	0.64	13,833	136,430	1.76	7,704

¹ See AEM June 19, 2024 news release for further details on the mineral reserves and mineral resources for Detour Lake as at March 31, 2024

² Open Pit ("O/P"), Underground ("U/G")

³ Represents metallurgical recovery percentage

⁴ Gold cut-off grades: Detour Lake O/P Mineral Reserves is 0.30 g/t; Detour Lake O/P Mineral Resources is 0.25 g/t; U/G Mineral Resources is 1.22 g/t

Detour Lake – Notes to Investors Regarding the Use of Mineral Resources

Mineral reserves were estimated using a gold price of US\$1,400/oz and a CAD/USD exchange rate of 1.30. The mineral reserves for Detour Lake are based on a high cut-off grade of 0.50 g/t gold and a low cut-off grade of 0.30 g/t gold (unchanged from the year-end 2023 mineral reserve estimate).

Cut-off grades were calculated including the costs of mining, milling, general and administrative costs, royalties and capital expenditures and other modifying factors (e.g., dilution, mining extraction, mill recovery), and were also calculated using an optimized variable cut-off grade over time. Dilution is estimated at an average of 7%.

The mineral resources were estimated using a gold price of US\$1,650/oz and a CAD/USD exchange rate of 1.30 for Detour Lake; and a gold price of US\$1,300/oz and a CAD/USD exchange rate of 1.25 for zone 58N deposit.

The open pit mineral resources for Detour Lake are based on a cut-off grade of 0.25 g/t gold (versus 0.30 g/t gold for the year-end 2023 mineral resource estimate).

The underground mineral resources for Detour Lake are based on a cut-off grade of 1.22 g/t gold (unchanged versus the year-end 2023 mineral resource estimate) and reported in mineable shapes. Cut-off grades were calculated including the costs of mining, milling, general and administration, royalties and other modifying factors (e.g., dilution, mill recovery).

Mineral resources for zone 58N are based on a cut-off grade of 2.2 g/t gold with an assumed mining dilution of 12%.

Mineral reserve and mineral resource estimates for the Detour Lake mine have been approved by Dyane Duquette, P.Geo., Vice-President, Mineral Resources Management, who is a "Qualified Person" for the purposes of NI 43-101.

The above gold price assumptions are below the three-year historic average (from January 1, 2021 to December 31, 2023) of approximately \$1,853 per ounce of gold.

Additional Information

Additional information about the Detour Lake mine including information regarding data verification, key assumptions, parameters and methods used to estimate mineral reserves and mineral resources and the risks that could materially affect the development of the mineral reserves and mineral resources required by sections 3.2 and 3.3 and paragraphs 3.4(a), (c) and (d) of NI 43-101 can be found in the Company's AIF and MD&A filed on SEDAR+ each of which forms a part of the Company's Form 40-F filed with the SEC on EDGAR and in the following technical report filed on SEDAR+: Detour Lake Operation, Ontario, Canada NI 43-101 Technical Report as at July 26, 2021 (October 15, 2021). The Company expects to file an updated NI 43-101 Technical Report on the Detour Lake mine in due course.

2023 Mineral Reserves and Mineral Resources*

MINERAL RESERVES AS OF DECEMBER 31, 2023

OPERATION / PROJECT			PROVEN			PROBABLE			PROVEN & PROBABLE			
GOLD	Mining Method	AEM Share	000 Tonnes	g/t	000 Oz Au	000 Tonnes	g/t	000 Oz Au	000 Tonnes	g/t	000 Oz Au	Metallurgical Recovery (%)
LaRonde mine ¹	U/G	100%	2,342	4.98	375	8,568	6.79	1,870	10,910	6.40	2,244	94.7
LaRonde zone 5 ²	U/G	100%	4,450	2.11	301	4,523	2.30	334	8,972	2.20	636	94.7
LaRonde complex Total			6,791	3.10	676	13,091	5.24	2,204	19,882	4.51	2,880	
Canadian Malartic ³			45,474	0.58	852	45,332	1.09	1,584	90,806	0.83	2,436	89.0
East Gouldie ⁴	U/G	100%	—	0.00	—	47,005	3.42	5,173	47,005	3.42	5,173	94.6
Odyssey deposits ⁵	U/G	100%	17	2.25	1	4,422	2.17	308	4,440	2.17	310	95.3
Canadian Malartic complex Total			45,491	0.58	853	96,760	2.27	7,065	142,251	1.73	7,919	
Goldex ⁶	U/G	100%	797	2.60	66	16,873	1.54	834	17,669	1.59	901	85.8
Akasaba West ⁷	O/P	100%	203	0.84	5	4,823	0.89	138	5,025	0.89	143	77.1
Quebec Total			53,282	0.93	1,601	131,546	2.42	10,242	184,828	1.99	11,843	
**Detour Lake (Above 0.5 g/t)	O/P	100%	70,048	1.14	2,565	484,633	0.90	14,029	554,681	0.93	16,594	91.9
**Detour Lake (Below 0.5 g/t)	O/P	100%	48,656	0.43	666	215,712	0.38	2,669	264,368	0.39	3,335	90.0
**Detour Lake Total⁸			118,703	0.85	3,230	700,346	0.74	16,698	819,049	0.76	19,928	
Macassa mine ⁹	U/G	100%	248	16.17	129	3,959	14.34	1,825	4,207	14.45	1,954	97.4
Macassa Near Surface ¹⁰	U/G	100%	2	4.23	—	117	5.96	22	119	5.93	23	95.0
AK deposit ¹¹	U/G	100%	—	0.00	—	742	6.69	160	742	6.69	160	95.0
Macassa Total			249	16.10	129	4,818	12.96	2,007	5,067	13.11	2,136	
***Upper Beaver ¹²	U/G	100%	—	0.00	—	7,992	5.43	1,395	7,992	5.43	1,395	95.0
Hammond Reef ¹³	O/P	100%	—	0.00	—	123,473	0.84	3,323	123,473	0.84	3,323	89.2
Ontario Total			118,952	0.88	3,359	836,629	0.87	23,424	955,581	0.87	26,783	
Amaruq	O/P	100%	3,010	1.58	153	9,469	3.76	1,146	12,479	3.24	1,299	91.7
Amaruq	U/G	100%	49	5.96	9	2,829	5.81	528	2,878	5.81	538	91.7
Meadowbank complex Total¹⁴			3,059	1.65	162	12,298	4.23	1,674	15,357	3.72	1,837	
Meliadine			266	4.27	37	4,632	4.46	664	4,898	4.45	700	94.7
Meliadine	U/G	100%	1,514	7.57	369	11,846	6.30	2,398	13,360	6.44	2,767	96.3
Meliadine Total¹⁵			1,780	7.08	405	16,478	5.78	3,062	18,258	5.91	3,467	
Hope Bay ¹⁶			93	6.77	20	16,123	6.51	3,377	16,216	6.52	3,397	87.5
Nunavut Total			4,932	3.71	588	44,899	5.62	8,113	49,831	5.43	8,701	
Fosterville ¹⁷	U/G	100%	679	12.52	273	7,897	5.55	1,409	8,576	6.10	1,682	95.0
Australia Total			679	12.52	273	7,897	5.55	1,409	8,576	6.10	1,682	
Kittila ¹⁸	U/G	100%	984	4.11	130	25,943	4.14	3,454	26,926	4.14	3,584	86.9
Europe Total			984	4.11	130	25,943	4.14	3,454	26,926	4.14	3,584	
Pinos Altos	O/P	100%	24	1.21	1	2,363	1.21	92	2,387	1.21	93	94.4
Pinos Altos	U/G	100%	2,386	2.14	164	4,150	2.17	290	6,536	2.16	454	94.2
Pinos Altos Total¹⁹			2,410	2.13	165	6,514	1.82	381	8,924	1.90	546	
San Nicolás (50%) ²⁰	O/P	50%	23,858	0.41	314	28,761	0.39	358	52,619	0.40	672	17.6
Mexico Total			26,268	0.57	479	35,275	0.65	739	61,543	0.62	1,219	
Total Gold			205,096	0.98	6,430	1,082,188	1.36	47,380	1,287,284	1.30	53,811	

* See AEM February 15, 2024 news release for further details on the mineral reserves and mineral resources as at December 31, 2023

** See update on the mineral reserves and mineral resources 'Detour Lake – March 31, 2024 Gold Mineral Reserves and Mineral Resources' as at March 31, 2024

*** See update on the mineral reserves and mineral resources 'Upper Beaver – June 30, 2024 Gold Mineral Reserves and Mineral Resources' as at June 30, 2024

2023 Mineral Reserves and Mineral Resources

MINERAL RESERVES AS OF DECEMBER 31, 2023

OPERATION / PROJECT			PROVEN			PROBABLE			PROVEN & PROBABLE			
SILVER	Mining Method*	AEM Share	000 Tonnes	g/t	000 Oz Ag	000 Tonnes	g/t	000 Oz Ag	000 Tonnes	g/t	000 Oz Ag	Metallurgical Recovery (%)
LaRonde	U/G	100%	2,342	14.32	1,078	8,568	21.60	5,950	10,910	20.04	7,028	74.9
Pinos Altos	O/P	100%	24	43.30	33	2,363	36.35	2,762	2,387	36.42	2,796	44.5
Pinos Altos	U/G	100%	2,386	40.03	3,070	4,150	47.41	6,326	6,536	44.71	9,396	49.3
Pinos Altos Total			2,410	40.06	3,104	6,514	43.40	9,088	8,924	42.50	12,192	
San Nicolás (50%)	O/P	50%	23,858	23.93	18,356	28,761	20.91	19,333	52,619	22.28	37,689	38.6
Total Silver			28,609	24.50	22,538	43,843	24.38	34,371	72,453	24.43	56,909	

COPPER	Mining Method*	AEM Share	000 Tonnes	%	Tonnes Cu	000 Tonnes	%	Tonnes Cu	000 Tonnes	%	Tonnes Cu	Metallurgical Recovery (%)
LaRonde	U/G	100%	2,342	0.19	4,558	8,568	0.30	25,341	10,910	0.27	29,899	83.6
Akasaba West	O/P	100%	203	0.44	890	4,823	0.50	24,262	5,025	0.50	25,153	83.6
Upper Beaver	U/G	100%	—	—	—	7,992	0.25	19,980	7,992	0.25	19,980	90.0
San Nicolás (50%)	O/P	50%	23,858	1.26	299,809	28,761	1.01	291,721	52,619	1.12	591,530	78.2
Total Copper			26,402	1.16	305,258	50,144	0.72	361,305	76,546	0.87	666,562	

ZINC	Mining Method*	AEM Share	000 Tonnes	%	Tonnes Zn	000 Tonnes	%	Tonnes Zn	000 Tonnes	%	Tonnes Zn	Metallurgical Recovery (%)
LaRonde	U/G	100%	2,342	0.62	14,424	8,568	1.08	92,164	10,910	0.98	106,588	69.2
San Nicolás (50%)	O/P	50%	23,858	1.61	383,313	28,761	1.37	394,115	52,619	1.48	777,428	80.9
Total Zinc			26,199	1.52	397,736	37,330	1.30	486,280	63,529	1.39	884,016	

*Underground ("U/G"), Open Pit ("O/P")

1 LaRonde mine: Net smelter value cut-off varies according to mining type and depth, not less than C\$91/t for LP1 and not less than C\$192/t for Laronde.

2 LaRonde zone 5: Gold cut-off grade varies according to stope size and depth, not less than 1.56 g/t.

3 Canadian Malartic: Gold cut-off grade not less than 0.34 g/t for Barnat pit.

4 East Gouldie: Gold cut-off grade not less than 1.67 g/t.

5 Odyssey deposits: Gold cut-off grade varies according to mining zone and depth, not less than 1.53 g/t.

6 Goldex: Gold cut-off grade varies according to mining type and depth, not less than 1.00 g/t.

7 Akasaba West: Net smelter value cut-off varies, not less than C\$33/t.

8 Detour Lake: Gold cut-off grade not less than 0.30 g/t.

9 Macassa mine: Gold cut-off grade varies according to mining type, not less than 3.71 g/t for long hole method and 4.41 g/t for cut and fill method.

10 Macassa Near Surface: Gold cut-off grade not less than 4.33 g/t.

11 Amalgamated Kirkland (AK) deposit: Gold cut-off grade not less than 4.25 g/t.

12 Upper Beaver: Net smelter value cut-off not less than C\$125/t.

13 Hammond Reef: Gold cut-off grade not less than 0.41 g/t.

14 Amaruq: Gold cut-off grade varies according to mining type, not less than 1.14 g/t for open pit mineral reserves and 3.42 g/t for underground mineral reserves (gold cut-off grade for marginal underground mineral reserves from development is 1.14 g/t).

15 Meliadine: Gold cut-off grade varies according to mining type, not less than 1.80 g/t for open pit mineral reserves and 4.40 g/t for underground mineral reserves (gold cut-off grade for marginal underground mineral reserves from development is 1.80 g/t).

16 Hope Bay: Gold cut-off grade not less than 4.00 g/t.

17 Fosterville: Gold cut-off grade varies according to mining zone and type, not less than 3.80 g/t.

18 Kittila: Gold cut-off grade varies according to haulage distance, not less than 2.59 g/t.

19 Pinos Altos: Net smelter value cut-off varies according to mining zone and type, not less than C\$9.33/t for open pit mineral reserves and US\$49.93/t for the underground mineral reserves.

20 San Nicolás (50%): Net smelter return cut-off values for low zinc/copper ore of US\$9.71/t and for high zinc/copper ore of US\$13.15/t.

2023 Mineral Reserves and Mineral Resources

MINERAL RESOURCES AS OF DECEMBER 31, 2023

OPERATION / PROJECT			MEASURED			INDICATED			MEASURED & INDICATED			INFERRED		
GOLD	Mining Method ¹	AEM Share	000 Tonnes	g/t	000 Oz Au	000 Tonnes	g/t	000 Oz Au	000 Tonnes	g/t	000 Oz Au	000 Tonnes	g/t	000 Oz Au
LaRonde	U/G	100%	—	—	—	6,424	3.06	632	6,424	3.06	632	1,569	5.67	286
LaRonde zone 5	U/G	100%	—	—	—	10,594	2.27	774	10,594	2.27	774	10,437	3.38	1,134
LaRonde complex Total			—	—	—	17,018	2.57	1,407	17,018	2.57	1,407	12,006	3.68	1,420
Canadian Malartic	O/P	100%	—	—	—	—	—	—	—	—	—	8,171	0.81	214
Odyssey	U/G	100%	—	—	—	1,372	1.71	75	1,372	1.71	75	19,700	2.29	1,453
East Malartic	U/G	100%	—	—	—	11,134	2.04	731	11,134	2.04	731	65,748	2.12	4,480
East Gouldie	U/G	100%	—	—	—	4,853	1.56	244	4,853	1.56	244	45,239	2.29	3,331
Odyssey Project Total			—	—	—	17,358	1.88	1,050	17,358	1.88	1,050	130,687	2.20	9,263
Canadian Malartic Total			—	—	—	17,358	1.88	1,050	17,358	1.88	1,050	138,858	2.12	9,477
Goldex	U/G	100%	12,360	1.86	739	18,837	1.50	907	31,197	1.64	1,646	16,154	1.68	871
Akasaba West	O/P	100%	—	—	—	4,044	0.70	91	4,044	0.70	91	—	—	—
Wasamac	U/G	100%	—	—	—	27,850	2.43	2,173	27,850	2.43	2,173	9,232	2.66	789
Quebec Total			12,360	1.86	739	85,109	2.06	5,628	97,468	2.03	6,367	176,249	2.22	12,558
*Detour Lake	O/P	100%	30,861	1.45	1,434	697,821	0.74	16,520	728,681	0.77	17,955	58,317	0.62	1,156
*Detour Lake	U/G	100%	—	—	—	—	0.00	—	—	0.00	—	21,811	2.23	1,561
*Detour Lake zone 58N	U/G	100%	—	—	—	2,868	5.80	534	2,868	5.80	534	973	4.35	136
*Detour Lake Total			30,861	1.45	1,434	700,688	0.76	17,055	731,549	0.79	18,489	81,101	1.09	2,853
Macassa	U/G	100%	258	10.32	86	1,910	8.35	512	2,168	8.58	598	3,692	9.21	1,094
Macassa Near Surface	U/G	100%	—	—	—	65	6.14	13	65	6.14	13	133	6.62	28
AK Project	U/G	100%	—	—	—	163	6.95	37	163	6.95	37	282	5.69	52
Macassa Total			258	10.32	86	2,138	8.17	562	2,396	8.40	647	4,106	8.89	1,173
Aquarius	O/P	100%	—	—	—	23,112	1.49	1,106	23,112	1.49	1,106	502	0.87	14
Holt complex	U/G	100%	5,806	4.29	800	5,884	4.75	898	11,690	4.52	1,699	9,097	4.48	1,310
Anoki-McBean	U/G	100%	—	—	—	3,919	2.77	349	3,919	2.77	349	867	3.84	107
**Upper Beaver	U/G	100%	—	—	—	3,636	3.45	403	3,636	3.45	403	8,688	5.07	1,416
Upper Canada	O/P	100%	—	—	—	2,006	1.62	104	2,006	1.62	104	1,020	1.44	47
Upper Canada	U/G	100%	—	—	—	8,433	2.28	618	8,433	2.28	618	17,588	3.21	1,816
Upper Canada Total			—	—	—	10,439	2.15	722	10,439	2.15	722	18,608	3.11	1,863
Hammond Reef	O/P	100%	47,063	0.54	819	86,304	0.53	1,478	133,367	0.54	2,298	—	—	—
Ontario Total			83,988	1.16	3,140	836,119	0.84	22,574	920,107	0.87	25,713	122,968	2.21	8,736
Amaruq	O/P	100%	—	—	—	4,758	2.62	401	4,758	2.62	401	236	2.87	22
Amaruq	U/G	100%	—	—	—	8,544	4.37	1,199	8,544	4.37	1,199	3,938	4.75	602
Amaruq Total			—	—	—	13,302	3.74	1,600	13,302	3.74	1,600	4,173	4.65	623
Meadowbank complex Total			—	—	—	13,302	3.74	1,600	13,302	3.74	1,600	4,173	4.65	623
Meliadine	O/P	100%	3	3.17	—	4,613	3.14	466	4,615	3.14	466	1,135	4.45	162
Meliadine	U/G	100%	422	4.64	63	7,626	4.49	1,100	8,047	4.49	1,163	9,986	6.42	2,060
Meliadine Total			424	4.63	63	12,238	3.98	1,566	12,663	4.00	1,629	11,120	6.22	2,222
Hope Bay	U/G	100%	—	—	—	10,734	3.64	1,255	10,734	3.64	1,255	12,110	5.41	2,108
Nunavut Total			424	4.63	63	36,274	3.79	4,421	36,699	3.80	4,485	27,404	5.62	4,953
Fosterville	O/P	100%	820	2.81	74	1,771	3.87	220	2,591	3.53	294	326	2.72	29
Fosterville	U/G	100%	262	3.99	34	8,758	4.20	1,184	9,019	4.20	1,218	9,693	4.60	1,433
Fosterville Total			1,082	3.10	108	10,528	4.15	1,404	11,610	4.05	1,512	10,019	4.54	1,461
Northern Territory	O/P	100%	269	3.65	32	16,416	1.42	749	16,685	1.46	781	13,536	1.75	762
Northern Territory	U/G	100%	—	—	—	5,115	5.39	887	5,115	5.39	887	4,284	4.45	613
Northern Territory Total			269	3.65	32	21,531	2.36	1,636	21,800	2.38	1,668	17,820	2.40	1,376
Australia Total			1,351	3.21	139	32,059	2.95	3,040	33,410	2.96	3,180	27,839	3.17	2,837
Kittila	O/P	100%	—	—	—	—	—	—	—	—	—	373	3.89	47
Kittila	U/G	100%	4,299	2.91	402	13,632	2.93	1,285	17,931	2.93	1,687	6,192	5.13	1,020
Kittila Total			4,299	2.91	402	13,632	2.93	1,285	17,931	2.93	1,687	6,565	5.06	1,067
Barsele	O/P	55%	—	—	—	3,178	1.08	111	3,178	1.08	111	2,260	1.25	91
Barsele	U/G	55%	—	—	—	1,158	1.77	66	1,158	1.77	66	13,552	2.10	914
Barsele Total			—	—	—	4,335	1.27	176	4,335	1.27	176	15,811	1.98	1,005
Europe Total			4,299	2.91	402	17,967	2.53	1,461	22,266	2.60	1,863	22,376	2.88	2,072

* See update on the mineral reserves and mineral resources 'Detour Lake – March 31, 2024 Gold Mineral Reserves and Mineral Resources' as at March 31, 2024

** See update on the mineral reserves and mineral resources 'Upper Beaver – June 30, 2024 Gold Mineral Reserves and Mineral Resources' as at June 30, 2024

2023 Mineral Reserves and Mineral Resources

MINERAL RESOURCES AS OF DECEMBER 31, 2023

OPERATION / PROJECT			MEASURED			INDICATED			MEASURED & INDICATED			INFERRED		
GOLD	Mining Method*	AEM Share	000 Tonnes	g/t	000 Oz Au	000 Tonnes	g/t	000 Oz Au	000 Tonnes	g/t	000 Oz Au	000 Tonnes	g/t	000 Oz Au
Pinos Altos	O/P	100%	—	—	—	1,266	1.03	42	1,266	1.03	42	445	1.27	18
Pinos Altos	U/G	100%	—	—	—	10,394	1.92	643	10,394	1.92	643	1,431	1.87	86
Pinos Altos Total			—	—	—	11,659	1.83	685	11,659	1.83	685	1,876	1.73	104
La India	O/P	100%	4,478	0.52	74	814	0.54	14	5,292	0.52	88	66	0.40	1
San Nicolás (50%)	O/P	50%	261	0.08	1	3,037	0.20	19	3,297	0.19	20	2,468	0.13	10
Tarachi	O/P	100%	—	—	—	19,290	0.58	361	19,290	0.58	361	242	0.52	4
Chipriona	O/P	100%	—	—	—	10,983	0.92	326	10,983	0.92	326	976	0.66	21
El Barqueño Gold	O/P	100%	—	—	—	8,834	1.16	331	8,834	1.16	331	9,628	1.13	351
Santa Gertrudis	O/P	100%	—	—	—	19,267	0.91	563	19,267	0.91	563	9,819	1.36	429
Santa Gertrudis	U/G	100%	—	—	—	—	—	—	—	—	—	9,079	3.44	1,004
Santa Gertrudis Total			—	—	—	19,267	0.91	563	19,267	0.91	563	18,898	2.36	1,433
Total Mexico			4,739	0.49	75	73,884	0.97	2,299	78,623	0.94	2,373	34,154	1.75	1,923
Total Gold			107,161	1.32	4,558	1,081,412	1.13	39,423	1,188,573	1.15	43,981	410,990	2.50	33,080

SILVER	Mining Method*	AEM Share	000 Tonnes	g/t	000 Oz Ag	000 Tonnes	g/t	000 Oz Ag	000 Tonnes	g/t	000 Oz Ag	000 Tonnes	g/t	000 Oz Ag
LaRonde	U/G	100%	—	—	—	6,424	11.98	2,474	6,424	11.98	2,474	1,569	12.25	618
Pinos Altos	O/P	100%	—	—	—	1,266	21.60	879	1,266	21.60	879	445	31.74	454
Pinos Altos	U/G	100%	—	—	—	10,394	50.99	17,040	10,394	50.99	17,040	1,431	36.19	1,665
Pinos Altos Total			—	—	—	11,659	47.80	17,919	11,659	47.80	17,919	1,876	35.13	2,120
La India	O/P	100%	4,478	2.72	391	814	2.61	68	5,292	2.70	460	66	2.18	5
San Nicolás (50%)	O/P	50%	261	6.40	54	3,037	11.86	1,158	3,297	11.43	1,211	2,468	9.26	735
Chipriona	O/P	100%	—	—	—	10,983	100.72	35,566	10,983	100.72	35,566	976	86.77	2,722
El Barqueño Silver	O/P	100%	—	—	—	—	—	—	—	—	—	4,393	124.06	17,523
El Barqueño Gold	O/P	100%	—	—	—	8,834	4.73	1,343	8,834	4.73	1,343	9,628	16.86	5,218
Santa Gertrudis	O/P	100%	—	—	—	19,267	3.66	2,269	19,267	3.66	2,269	9,819	1.85	585
Santa Gertrudis	U/G	100%	—	—	—	—	—	—	—	—	—	9,079	23.31	6,803
Santa Gertrudis Total			—	—	—	19,267	3.66	2,269	19,267	3.66	2,269	18,898	12.16	7,389
Total Silver			4,739	2.92	445	61,018	30.99	60,796	65,757	28.97	61,240	39,874	28.34	36,328

COPPER	Mining Method*	AEM Share	000 Tonnes	%	Tonnes Cu	000 Tonnes	%	Tonnes Cu	000 Tonnes	%	Tonnes Cu	000 Tonnes	%	Tonnes Cu
LaRonde	U/G	100%	—	—	—	6,424	0.13	8,613	6,424	0.13	8,613	1,569	0.28	4,371
Akasaba West	O/P	100%	—	—	—	4,044	0.43	17,270	4,044	0.43	17,270	—	—	—
Upper Beaver	U/G	100%	—	—	—	3,636	0.14	5,135	3,636	0.14	5,135	8,688	0.20	17,284
San Nicolás (50%)	O/P	50%	261	1.35	3,526	3,037	1.17	35,489	3,297	1.18	39,015	2,468	0.94	23,144
Chipriona	O/P	100%	—	—	—	10,983	0.16	17,291	10,983	0.16	17,291	976	0.12	1,174
El Barqueño Gold	O/P	100%	—	—	—	8,834	0.19	16,400	8,834	0.19	16,400	9,628	0.22	21,152
El Barqueño Silver	O/P	100%	—	—	—	—	—	—	—	—	—	4,393	0.04	1,854
Total Copper			261	1.35	3,526	36,958	0.27	100,198	37,218	0.28	103,724	27,721	0.25	68,980

ZINC	Mining Method*	AEM Share	000 Tonnes	%	Tonnes Zn	000 Tonnes	%	Tonnes Zn	000 Tonnes	%	Tonnes Zn	000 Tonnes	%	Tonnes Zn
LaRonde	U/G	100%	—	—	—	6,424	0.74	47,404	6,424	0.74	47,404	1,569	0.36	5,600
San Nicolás (50%)	O/P	50%	261	0.39	1,012	3,037	0.71	21,618	3,297	0.69	22,630	2,468	0.62	15,355
Chipriona	O/P	100%	—	—	—	10,983	0.83	91,637	10,983	0.83	91,637	976	0.73	7,073
Total Zinc			261	0.39	1,012	20,444	0.79	160,659	20,704	0.78	161,671	5,012	0.56	28,029

*Underground ("U/G"), Open Pit ("O/P")



Notes to Investors Regarding the Use of Mineral Resources

The mineral reserve and mineral resource estimates contained in this presentation have been prepared in accordance with the Canadian securities administrators' (the "CSA") National Instrument 43-101 – Standards of Disclosure for Mineral Projects ("NI 43-101").

In 2019, the SEC's disclosure requirements and policies for mining properties were amended to more closely align with current industry and global regulatory practices and standards, including NI 43-101. However, Canadian issuers that report in the United States using the Multijurisdictional Disclosure System ("MJDS"), such as the Company, may still use NI 43-101 rather than the SEC disclosure requirements when using the SEC's MJDS registration statement and annual report forms. Accordingly, mineral reserve and mineral resource information contained in this presentation may not be comparable to similar information disclosed by U.S. companies.

Investors are cautioned that while the SEC recognizes "measured mineral resources", "indicated mineral resources" and "inferred mineral resources", investors should not assume that any part or all of the mineral deposits in these categories will ever be converted into a higher category of mineral resources or into mineral reserves. These terms have a great amount of uncertainty as to their economic and legal feasibility. **Accordingly, investors are cautioned not to assume that any "measured mineral resources", "indicated mineral resources", or "inferred mineral resources" that the Company reports in this presentation are or will be economically or legally mineable.** Under Canadian regulations, estimates of inferred mineral resources may not form the basis of feasibility or pre-feasibility studies, except in limited circumstances.

Further, "inferred mineral resources" have a great amount of uncertainty as to their existence and as to their economic and legal feasibility. It cannot be assumed that any part or all of an inferred mineral resource will ever be upgraded to a higher category.

The mineral reserve and mineral resource data set out in this presentation are estimates, and no assurance can be given that the anticipated tonnages and grades will be achieved or that the indicated level of recovery will be realized. The Company does not include equivalent gold ounces for by-product metals contained in mineral reserves in its calculation of contained ounces. Mineral reserves are not reported as a subset of mineral resources.

Scientific and Technical Information

The scientific and technical information contained in this presentation relating to Nunavut, Quebec and Finland operations has been approved by Dominique Girard, Eng., Executive Vice-President & Chief Operating Officer – Nunavut, Quebec & Europe; relating to Ontario, Australia and Mexico operations has been approved by Natasha Vaz, Executive Vice-President & Chief Operating Officer – Ontario, Australia & Mexico; relating to exploration has been approved by Guy Gosselin, Eng. and P.Geo., Executive Vice-President, Exploration; and relating to mineral reserves and mineral resources has been approved by Dyane Duquette, P.Geo., Vice-President, Mineral Resources Management, each of whom is a "Qualified Person" for the purposes of NI 43-101.

Mineral reserves are reported exclusive of mineral resources. Tonnage amounts and contained metal amounts set out in this table have been rounded to the nearest thousand, so may not aggregate to equal column totals. Mineral reserves are *in-situ*, taking into account all mining recoveries, before mill or heap leach recoveries. Underground mineral reserves and measured and indicated mineral resources are reported within mineable shapes and include internal and external dilution. Inferred mineral resources are reported within mineable shapes and include internal dilution. Mineable shape optimization parameters may differ for mineral reserves and mineral resources.

The mineral reserves and mineral resources tonnages reported for silver, copper and zinc are a subset of the mineral reserves and mineral resources tonnages for gold. The Company's economic parameters set the maximum price allowed to be no more than the lesser of the three-year moving average and current spot price, which is a common industry standard. Given the current commodity price environment, Agnico Eagle continues to use more conservative gold and silver prices.

The below metal price assumptions are below the three-year historic average (from January 1, 2021 to December 31, 2023) of approximately \$1,853 per ounce of gold, \$23.50 per ounce of silver, \$4.03 per pound of copper and \$1.38 per pound of zinc.

Metal Price for Mineral Reserve Estimation ¹			
Gold (US\$/oz)	Silver (US\$/oz)	Copper (US\$/lb)	Zinc (US\$/lb)
\$1,400	\$18.00	\$3.50	\$1.00

Exchange rates ²			
C\$ per US\$1.00	Mexican peso per US\$1.00	AUD per US\$1.00	EURO per US\$1.00
CAD1.30	MXP18.00	AUD1.36	€0.909

² Exceptions: exchange rate of CAD\$1.25 per US\$1.00 used for Upper Beaver, Upper Canada, Holt complex and Detour Lake zone 58N; CAD\$1.11 per US\$1.00 used for Aquarius; US\$1.15 per €1.00 used for Barsele; and MXP17.00 per US\$1.00 used for Tarachi.

Mines / Projects	Metal Price for Mineral Resource Estimation ³			
	Gold (US\$/oz)	Silver (US\$/oz)	Copper (US\$/lb)	Zinc (US\$/lb)
Operating mines and pipeline projects	\$1,650	\$22.50	\$3.75	\$1.25

³ Exceptions: US\$1,500 per ounce of gold used for Detour Lake open pit, Northern Territory and Holt complex; US\$1,300 per ounce of gold used for Detour Lake zone 58N; US\$1,400 per ounce of gold used for Canadian Malartic, US\$1,688 per ounce of gold used for Hope Bay, Santa Gertrudis and Hammond Reef; US\$1,667 per ounce of gold used for Upper Canada and El Barqueño; US\$1,200 per ounce of gold and US\$2.75 per pound of copper used for Upper Beaver; US\$1,533 per ounce of gold used for Barsele; US\$500 per ounce of gold used for Aquarius, US\$22.67 per ounce of silver used for El Barqueño; US\$1,687 per ounce of gold used for Anoki-McBean and Tarachi; US\$25.00 per ounce of silver used for Santa Gertrudis; US\$1,300 per ounce of gold, US\$20.00 per ounce of silver, US\$3.00 per pound of copper and US\$1.10 per pound of zinc used for San Nicolás.

Notes to Investors Regarding the Use of Mineral Resources (continued)

NI 43-101 requires mining companies to disclose mineral reserves and mineral resources using the subcategories of "proven mineral reserves", "probable mineral reserves", "measured mineral resources", "indicated mineral resources" and "inferred mineral resources". Mineral resources that are not mineral reserves do not have demonstrated economic viability.

A mineral reserve is the economically mineable part of a measured and/or indicated mineral resource. It includes diluting materials and allowances for losses, which may occur when the material is mined or extracted and is defined by studies at pre-feasibility or feasibility level as appropriate that include application of modifying factors. Such studies demonstrate that, at the time of reporting, extraction could reasonably be justified. The mineral reserves presented in this presentation are separate from and not a portion of the mineral resources.

Modifying factors are considerations used to convert mineral resources to mineral reserves. These include, but are not restricted to, mining, processing, metallurgical, infrastructure, economic, marketing, legal, environmental, social and governmental factors.

A proven mineral reserve is the economically mineable part of a measured mineral resource. A proven mineral reserve implies a high degree of confidence in the modifying factors. A probable mineral reserve is the economically mineable part of an indicated and, in some circumstances, a measured mineral resource. The confidence in the modifying factors applied to a probable mineral reserve is lower than that applied to a proven mineral reserve.

A mineral resource is a concentration or occurrence of solid material of economic interest in or on the Earth's crust in such form, grade or quality and quantity that there are reasonable prospects for eventual economic extraction. The location, quantity, grade or quality, continuity and other geological characteristics of a mineral resource are known, estimated or interpreted from specific geological evidence and knowledge, including sampling.

A measured mineral resource is that part of a mineral resource for which quantity, grade or quality, densities, shape and physical characteristics are estimated with confidence sufficient to allow the application of modifying factors to support detailed mine planning and final evaluation of the economic viability of the deposit. Geological evidence is derived from detailed and reliable exploration, sampling and testing and is sufficient to confirm geological and grade or quality continuity between points of observation. An indicated mineral resource is that part of a mineral resource for which quantity, grade or quality, densities, shape and physical characteristics are estimated with sufficient confidence to allow the application of modifying factors in sufficient detail to support mine planning and evaluation of the economic viability of the deposit. Geological evidence is derived from adequately detailed and reliable exploration, sampling and testing and is sufficient to assume geological and grade or quality continuity between points of observation. An inferred mineral resource is that part of a mineral resource for which quantity and grade or quality are estimated on the basis of limited geological evidence and sampling. Geological evidence is sufficient to imply but not verify geological and grade or quality continuity.

Investors are cautioned not to assume that part or all of an inferred mineral resource exists, or is economically or legally mineable.

A feasibility study is a comprehensive technical and economic study of the selected development option for a mineral project that includes appropriately detailed assessments of applicable modifying factors, together with any other relevant operational factors and detailed financial analysis that are necessary to demonstrate, at the time of reporting, that extraction is reasonably justified (economically mineable). The results of the study may reasonably serve as the basis for a final decision by a proponent or financial institution to proceed with, or finance, the development of the project. The confidence level of the study will be higher than that of a pre-feasibility study.

Additional Information

Additional information about each of the Company's material mineral projects as at December 31, 2023, including information regarding data verification, key assumptions, parameters and methods used to estimate mineral reserves and mineral resources and the risks that could materially affect the development of the mineral reserves and mineral resources required by sections 3.2 and 3.3 and paragraphs 3.4(a), (c) and (d) of NI 43-101 can be found in the Company's AIF and MD&A filed on SEDAR+ each of which forms a part of the Company's Form 40-F filed with the SEC on EDGAR and in the following technical reports filed on SEDAR+ in respect of the Company's material mineral properties: NI 43-101 Technical Report of the LaRonde complex in Québec, Canada (March 24, 2023); NI 43-101 Technical Report Canadian Malartic Mine, Québec, Canada (March 25, 2021); Technical Report on the Mineral Resources and Mineral Reserves at Meadowbank Gold complex including the Amaruq Satellite Mine Development, Nunavut, Canada as at December 31, 2017 (February 14, 2018); the Updated Technical Report on the Meliadine Gold Project, Nunavut, Canada (February 11, 2015); and the Detour Lake Operation, Ontario, Canada NI 43-101 Technical Report as at July 26, 2021 (October 15, 2021).

Notes to Investors Regarding Certain Measures of Performance

This presentation discloses certain financial performance measures and ratios, including "total cash costs per ounce", "minesite costs per tonne", "all-in sustaining costs per ounce", "adjusted net income", "adjusted net income per share", "cash provided by operating activities before changes in non-cash working capital balances", "cash provided by operating activities before changes in non-cash working capital balances per share", "EBITDA" which means earnings before interest, taxes, depreciation and amortization, "adjusted EBITDA", "free cash flow", "free cash flow before changes in non-cash working capital balances", "operating margin", "sustaining capital expenditures", "development capital expenditures" and "net debt", as well as, for certain of these measures their related per share ratios that are not standardized measures under IFRS. These measures may not be comparable to similar measures reported by other gold producers and should be considered together with other data prepared in accordance with IFRS. See below for a reconciliation of these measures to the most directly comparable financial information reported in the consolidated financial statements prepared in accordance with IFRS.

Total cash costs per ounce and minesite costs per tonne

Total cash costs per ounce is calculated on a per ounce of gold produced basis and is reported on both a by-product basis (deducting by-product metal revenues from production costs) and co-product basis (without deducting by-product metal revenues). Total cash costs per ounce on a by-product basis is calculated by adjusting production costs as recorded in the condensed interim consolidated statements of income for by-product revenues, inventory production costs, the impact of purchase price allocation in connection with mergers and acquisitions on inventory accounting, realized gains and losses on hedges of production costs, operational care and maintenance costs due to COVID-19 and other adjustments, which include the costs associated with a 5% in-kind royalty paid in respect of certain portions of Canadian Malartic, a 2% in-kind royalty paid in respect of Detour Lake, a 1.5% in-kind royalty paid in respect of Macassa, as well as smelting, refining and marketing charges and then dividing by the number of ounces of gold produced. Given the nature of the fair value adjustment on inventory related to mergers and acquisitions and the use of the total cash costs per ounce measures to reflect the cash generating capabilities of the Company's operations, the calculations of total cash costs per ounce for Canadian Malartic has been adjusted for the purchase price allocation in the comparative period data. Investors should note that total cash costs per ounce are not reflective of all cash expenditures, as they do not include income tax payments, interest costs or dividend payments. Total cash costs per ounce on a co-product basis is calculated in the same manner as the total cash costs per ounce on a by-product basis, except that no adjustment is made for by-product metal revenues. Accordingly, the calculation of total cash costs per ounce on a co-product basis does not reflect a reduction in production costs or smelting, refining and marketing charges associated with the production and sale of by-product metals.

Total cash costs per ounce is intended to provide investors information about the cash-generating capabilities of the Company's mining operations. Management also uses these measures to, and believes they are useful to investors so investors can, understand and monitor the performance of the Company's mining operations. The Company believes that total cash costs per ounce is useful to help investors understand the costs associated with producing gold and the economics of gold mining. As market prices for gold are quoted on a per ounce basis, using the total cash costs per ounce on a by-product basis measure allows management and investors to assess a mine's cash-generating capabilities at various gold prices. Management is aware, and investors should note, that these per ounce measures of performance can be affected by fluctuations in exchange rates and, in the case of total cash costs per ounce on a by-product basis, by-product metal prices. Management compensates for these inherent limitations by using, and investors should also consider using, these measures in conjunction with data prepared in accordance with IFRS and minesite costs per tonne as these measures are not necessarily indicative of operating costs or cash flow measures prepared in accordance with IFRS. Management also performs sensitivity analyses in order to quantify the effects of fluctuating metal prices and exchange rates.

Agnico Eagle's primary business is gold production and the focus of its current operations and future development is on maximizing returns from gold production, with other metal production being incidental to the gold production process. Accordingly, all metals other than gold are considered by-products.

Unless otherwise indicated, total cash costs per ounce is reported on a by-product basis. Total cash costs per ounce is reported on a by-product basis because (i) the majority of the Company's revenues are from gold, (ii) the Company mines ore, which contains gold, silver, zinc, copper and other metals, (iii) it is not possible to specifically assign all costs to revenues from the gold, silver, zinc, copper and other metals the Company produces, (iv) it is a method used by management and the Board of Directors to monitor operations, and (v) many other gold producers disclose similar measures on a by-product rather than a co-product basis.

Minesite costs per tonne are calculated by adjusting production costs as recorded in the condensed interim consolidated statements of income for inventory production costs, operational care and maintenance costs due to COVID-19 and other adjustments, and then dividing by tonnage of ore processed. As the total cash costs per ounce can be affected by fluctuations in by-product metal prices and foreign exchange rates, management believes that minesite costs per tonne is useful to investors in providing additional information regarding the performance of mining operations, eliminating the impact of varying production levels. Management also uses this measure to determine the economic viability of mining blocks. As each mining block is evaluated based on the net realizable value of each tonne mined, in order to be economically viable the estimated revenue on a per tonne basis must be in excess of the minesite costs per tonne. Management is aware, and investors should note, that this per tonne measure of performance can be affected by fluctuations in processing levels. This inherent limitation may be partially mitigated by using this measure in conjunction with production costs and other data prepared in accordance with IFRS.

Notes to Investors Regarding Certain Measures of Performance (continued)

All-in sustaining costs per ounce

All-in sustaining costs per ounce (also referred to as "AISC per ounce") on a by-product basis is calculated as the aggregate of total cash costs on a by-product basis, sustaining capital expenditures (including capitalized exploration), general and administrative expenses (including stock options), lease payments related to sustaining assets and reclamation expenses, and then dividing by the number of ounces of gold produced. These additional costs reflect the additional expenditures that are required to be made to maintain current production levels. The AISC per ounce on a co-product basis is calculated in the same manner as the AISC per ounce on a by-product basis, except that the total cash costs on a co-product basis are used, meaning no adjustment is made for by-product metal revenues. Investors should note that AISC per ounce is not reflective of all cash expenditures as it does not include income tax payments, interest costs or dividend payments, nor does it include non-cash expenditures, such as depreciation and amortization. Unless otherwise indicated, all-in sustaining costs per ounce is reported on a byproduct basis (see "Total cash costs per ounce" for a discussion of regarding the Company's use of by-product basis reporting).

Management believes that AISC per ounce is useful to investors as it reflects total sustaining expenditures of producing and selling an ounce of gold while maintaining current operations and, as such, provides useful information about operating performance. Management is aware, and investors should note, that these per ounce measures of performance can be affected by fluctuations in foreign exchange rates and, in the case of AISC per ounce on a by-product basis, by-product metal prices. Management compensates for these inherent limitations by using, and investors should also consider using, these measures in conjunction with data prepared in accordance with IFRS and minesite costs per tonne as this measure is not necessarily indicative of operating costs or cash flow measures prepared in accordance with IFRS.

The Company follows the guidance on calculation of AISC per ounce released by the World Gold Council ("WGC") in 2018. The WGC is a non-regulatory market development organization for the gold industry that has worked closely with its member companies to develop guidance in respect of relevant non-GAAP measures. Notwithstanding the Company's adoption of the WGC's guidance, AISC per ounce reported by the Company may not be comparable to data reported by other gold mining companies.

Adjusted net income and adjusted net income per share

Adjusted net income and adjusted net income per share are calculated by adjusting the net income as recorded in the condensed interim consolidated statements of income for the effects of certain items that the Company believes are not reflective of the Company's underlying performance for the reporting period. Adjusted net income is calculated by adjusting net income for items such as foreign currency translation gains or losses, realized and unrealized gains or losses on derivative financial instruments, revaluation gains, impairment loss charges and reversals, environmental remediation, severance and transaction costs related to acquisitions, purchase price allocations to inventory, gains or losses on the disposal of assets, retroactive payments and income and mining taxes adjustments. Adjusted net income per share is calculated by dividing adjusted net income by the weighted average number of shares outstanding at the end of the period on a basic and diluted basis.

The Company believes that these generally accepted industry measures are useful to investors in that they allow for the evaluation of the results of continuing operations and in making comparisons between periods. Adjusted net income and adjusted net income per share are intended to provide investors with information about the Company's continuing income generating capabilities from its core mining business, excluding the above adjustments, which the Company believes are not reflective of operational performance. Management uses this measure to, and believes it is useful to investors so they can, understand and monitor for the operating performance of the Company in conjunction with other data prepared in accordance with IFRS.

EBITDA and adjusted EBITDA

EBITDA is calculated by adjusting the net income as recorded in the condensed interim consolidated statements of income for finance costs, amortization of property, plant and mine development and income and mining tax expense line items as reported in the condensed interim consolidated statements of income.

Adjusted EBITDA removes the effects of certain items that the Company believes are not reflective of the Company's underlying performance for the reporting period. Adjusted EBITDA is calculated by adjusting the EBITDA calculation for items such as foreign currency translation gains or losses, realized and unrealized gains or losses on derivative financial instruments, revaluation gains, impairment loss charges and reversals, environmental remediation, severance and transaction costs related to acquisitions, gains or losses on the disposal of assets, retroactive payments and purchase price allocations to inventory.

The Company believes that these generally accepted industry measures are useful in that they allow for the evaluation of the cash generating capability of the Company to fund its working capital, capital expenditure and debt repayments. EBITDA and Adjusted EBITDA are intended to provide investors with information about the Company's continuing cash generating capability from its core mining business, excluding the above adjustments, which management believes are not reflective of operational performance. Management uses these measures to, and believes it is useful to investors so they can, understand and monitor the cash generating capability of the Company in conjunction with other data prepared in accordance with IFRS.

Cash provided by operating activities before changes in non-cash working capital balances and cash provided by operating activities before changes in non-cash working capital balances per share

Cash provided by operating activities before changes in non-cash working capital balances and cash provided by operating activities before changes in non-cash working capital balances per share are calculated by adjusting the cash provided by operating activities as shown in the condensed interim consolidated statements of cash flows for the effects of changes in non-cash working capital balances such as income taxes, inventories, other current assets, accounts payable and accrued liabilities and interest payable. The per share amount is calculated by dividing cash provided by operating activities before changes in non-cash working capital balances by the weighted average number of shares outstanding at the end of the period on a basic basis. The Company believes that changes in working capital can be volatile due to numerous factors, including the timing of payments. Management uses these measures to, and believes they are useful to investors so they can, assess the underlying operating cash flow performance and future operating cash flow generating capabilities of the Company in conjunction with other data prepared in accordance with IFRS.

Notes to Investors Regarding Certain Measures of Performance (continued)

Free cash flow and free cash flow before changes in non-cash working capital balances

Free cash flow is calculated by deducting additions to property, plant and mine development from the cash provided by operating activities line item as recorded in the condensed interim consolidated statements of cash flows.

Free cash flow before changes in non-cash components of working capital is calculated by excluding items such as the effect of changes in non-cash components of working capital from free cash flow, which includes income taxes, inventory, other current assets, accounts payable and accrued liabilities and interest payable.

The Company believes that these generally accepted industry measures are useful in that they allow for the evaluation of the Company's ability to repay creditors and return cash to shareholders without relying on external sources of funding. Free cash flow and free cash flow before changes in non-cash components of working capital also provide investors with information about the Company's financial position and its ability to generate cash to fund operational and capital requirements as well as return cash to shareholders. Management uses these measures in conjunction with other data prepared in accordance with IFRS to, and believes it is useful to investors so they can, understand and monitor the cash generating ability of the Company.

Operating margin

Operating margin is calculated by deducting production costs from revenue from mining operations. In order to reconcile operating margin to net income as recorded in the condensed interim consolidated financial statements, the Company adds the following items to the operating margin: income and mining taxes expense; other expenses (income); care and maintenance expenses; foreign currency translation (gain) loss; environmental remediation costs; gain (loss) on derivative financial instruments; finance costs; general and administrative expenses; amortization of property, plant and mine development; exploration and corporate development expenses; and revaluation gain and impairment losses (reversals). The Company believes that operating margin is a useful measure to investors as it reflects the operating performance of its individual mines associated with the ongoing production and sale of gold and by-product metals without allocating Company-wide overhead, including exploration and corporate development expenses, amortization of property, plant and mine development, general and administrative expenses, finance costs, gain and losses on derivative financial instruments, environmental remediation costs, foreign currency translation gains and losses, other expenses and income and mining tax expenses. Management uses this measure internally to plan and forecast future operating results. Management believes this measure is useful to investors as it provides them with additional information about the Company's underlying operating results and should be evaluated in conjunction with other data prepared in accordance with IFRS.

Sustaining capital expenditures and development capital expenditures

Capital expenditures are classified into sustaining capital expenditures and development capital expenditures. Sustaining capital expenditures are expenditures incurred during the production phase to sustain and maintain existing assets so they can achieve constant expected levels of production from which the Company will derive economic benefits. Sustaining capital expenditures include expenditure for assets to retain their existing productive capacity as well as to enhance performance and reliability of the operations. Development capital expenditures represent the spending at new projects and/or expenditures at existing operations that are undertaken with the intention to increase production levels or mine life above the current plans. Management uses these measures in the capital allocation process and to assess the effectiveness of its investments. Management believes these measures are useful so investors can assess the purpose and effectiveness of the capital expenditures split between sustaining and development in each reporting period. The classification between sustaining and development capital expenditures does not have a standardized definition in accordance with IFRS and other companies may classify expenditures in a different manner.

Net debt

Net debt is calculated by adjusting the total of the current portion of long-term debt and non-current long-term debt as recorded on the condensed interim consolidated balance sheets for deferred financing costs and cash and cash equivalents. Management believes the measure of net debt is useful to help investors to determine the Company's overall debt position and to evaluate the future debt capacity of the Company.

Forward-Looking Non-GAAP Measures

This presentation also contains information as to estimated future total cash costs per ounce and AISC per ounce. The estimates are based upon the total cash costs per ounce and AISC per ounce that the Company expects to incur to mine gold at its mines and projects and, consistent with the reconciliation of these actual costs referred to above, do not include production costs attributable to accretion expense and other asset retirement costs, which will vary over time as each project is developed and mined. It is therefore not practicable to reconcile these forward-looking non-GAAP financial measures to the most comparable IFRS measure.

Note Regarding Production Guidance

The gold production guidance is based on the Company's mineral reserves but includes contingencies and assumes metal prices and foreign exchange rates that are different from those used in the mineral reserve estimates. These factors and others mean that the gold production guidance presented in this presentation does not reconcile exactly with the production models used to support these mineral reserves.

Note Regarding Currency

All amounts expressed in U.S. dollars unless otherwise noted.



Trading Symbol:
AEM on TSX & NYSE

Investor Relations:
416-947-1212
info@agnicoeagle.com

agnicoeagle.com

