



## Forward-Looking Statements

The information in this presentation has been prepared as at September 3, 2024. Certain statements contained in this presentation constitute "forward-looking statements" within the meaning of the United States Private Securities Litigation Reform Act of 1995 and "forward-looking information" under the provisions of Canadian provincial securities laws and are referred to herein as "forward-looking statements". All statements, other than statements of historical fact, that address circumstances, events, activities or developments that could, or may or will occur are forward-looking statements. When used in this presentation, the words "achieve", "aim", "anticipate", "commit", "could", "estimate", "expect", "forecast", "future", "guide", "plan", "potential", "schedule", "target", "track", "will", and similar expressions are intended to identify forward-looking statements. Such statements include the Company's forward-looking guidance, including metal production, estimated ore grades, recovery rates, project timelines, drilling targets or results, life of mine estimates, total cash costs per ounce, AISC per ounce, minesite costs per tonne, other expenses and cash flows; the potential for additional gold production at the Company's sites; the estimated timing and conclusions of the Company's studies and evaluations; the methods by which ore will be extracted or processed; the Company's expansion plans at Detour Lake, Meliadine Phase 2, Amaruq underground, Upper Beaver and Odyssey, including the timing, funding, completion and commissioning thereof and the commencement of production therefrom and the potential for Detour to reach one million ounces per year and the ability to "fill the mill" at Canadian Malartic; the Company's plans at Hope Bay and San Nicolás; statements concerning other expansion projects, recovery rates, mill throughput, optimization efforts and projected exploration, including costs and other estimates upon which such projections are based; timing and amounts of capital expenditures, other expenditures and other cash needs, and expectations as to the funding thereof; estimates of future mineral reserves, mineral resources, mineral production and sales; the projected development of certain ore deposits, including estimates of exploration, development and production and other capital costs and estimates of the timing of such exploration, development and production or decisions with respect to such exploration, development and production; anticipated cost inflation and its effect on the Company's costs and results; estimates of mineral reserves and mineral resources and the effect of drill results and studies on future mineral reserves and mineral resources; the Company's ability to obtain the necessary permits and authorizations in connection with its proposed or current exploration, development and mining operations, including at Meliadine, Upper Beaver and San Nicolás, and the anticipated timing thereof; future exploration; the anticipated timing of events with respect to the Company's mine sites; the Company's plans and strategies with respect to climate change and greenhouse gas emissions reductions; the sufficiency of the Company's cash resources; the Company's plans with respect to hedging and the effectiveness of its hedging strategies; future activity with respect to the Company's unsecured revolving bank credit facility, the term loan facility and other indebtedness; future dividend amounts, record dates and payment dates; plans with respect to activity under the NCIB; and anticipated trends with respect to the Company's operations, exploration and the funding thereof. Such statements reflect the Company's views as at the date of this presentation and are subject to certain risks, uncertainties and assumptions, and undue reliance should not be placed on such statements. Forward-looking statements are necessarily based upon a number of factors and assumptions that, while considered reasonable by Agnico Eagle as of the date of such statements, are inherently subject to significant business, economic and competitive uncertainties and contingencies. The material factors and assumptions used in the preparation of the forward-looking statements contained herein, which may prove to be incorrect, include, but are not limited to, the assumptions set forth herein and in management's discussion and analysis ("MD&A") and the Company's Annual Information Form ("AIF") for the year ended December 31, 2023 filed with Canadian securities regulators and that are included in its Annual Report on Form 40-F for the year ended December 31, 2023 ("Form 40-F") filed with the U.S. Securities and Exchange Commission (the "SEC") as well as: that there are no significant disruptions affecting operations; that production, permitting, development, expansion and the ramp-up of operations at each of Agnico Eagle's properties proceeds on a basis consistent with current expectations and plans; that the relevant metal prices, foreign exchange rates and prices for key mining and construction inputs (including labour and electricity) will be consistent with Agnico Eagle's expectations; that Agnico Eagle's current estimates of mineral reserves, mineral resources, mineral grades and metal recovery are accurate; that there are no material delays in the timing for completion of ongoing growth projects; that seismic activity at the Company's operations at LaRonde, Goldex, Fosterville and other properties is as expected by the Company and that the Company's efforts to mitigate its effect on mining operations, including with respect to community relations, are successful; that the Company's current plans to address climate change and reduce greenhouse gas emissions are successful; that the Company's current plans to optimize production are successful; that there are no material variations in the current tax and regulatory environment; that governments, the Company or others do not take measures in response to pandemics or other health emergencies or otherwise that, individually or in the aggregate, materially affect the Company's ability to operate its business or its productivity; and that measures taken relating to, or other effects of, pandemics or other health emergencies do not affect the Company's ability to obtain necessary supplies and deliver them to its mine sites. Many factors, known and unknown, could cause the actual results to be materially different from those expressed or implied by such forward-looking statements. Such risks include, but are not limited to: the volatility of prices of gold and other metals; uncertainty of mineral reserves, mineral resources, mineral grades and mineral recovery estimates; uncertainty of future production, project development, capital expenditures and other costs; foreign exchange rate fluctuations; inflationary pressures; financing of additional capital requirements; cost of exploration and development programs; seismic activity at the Company's operations, including at LaRonde, Goldex and Fosterville; mining risks; community protests, including by Indigenous groups; risks associated with foreign operations; governmental and environmental regulation; the volatility of the Company's stock price; risks associated with the Company's currency, fuel and by-product metal derivative strategies; the current interest rate environment; the potential for major economies to encounter a slowdown in economic activity or a recession; the potential for increased conflict or hostilities in various regions, including Europe and the Middle East; and the extent and manner of communicable diseases or outbreaks, and measures taken by governments, the Company or others to attempt to mitigate the spread thereof may directly or indirectly affect the Company. For a more detailed discussion of such risks and other factors that may affect the Company's ability to achieve the expectations set forth in the forward-looking statements contained in this presentation, see the AIF and MD&A filed on SEDAR+ at [www.sedarplus.ca](http://www.sedarplus.ca) and included in the Form 40-F filed on EDGAR at [www.sec.gov](http://www.sec.gov), as well as the Company's other filings with the Canadian securities regulators and the SEC. Other than as required by law, the Company does not intend, and does not assume any obligation, to update these forward-looking statements.

## Notes Regarding Certain Climate Change and GHG Disclosure

This presentation includes information with respect to climate change plans and strategies and GHG emissions reductions plans and strategies that has been prepared for the purpose of assisting the Company's stakeholders in understanding certain key elements of the Company's climate and other sustainability-related objectives, targets and risks and may not be suitable or appropriate for other purposes. This information has been provided from a different perspective and in more detail than is required to be included in mandatory securities filings. None of the information in this presentation relating to climate change plans and strategies and GHG emissions reductions plans and strategies has been audited. Due to the inherent uncertainty and limitations in measuring GHG emissions and intensity, energy consumption and composition, project type GHG reduction potential and likelihood, and climate-related risks and opportunities under the calculation methodologies used in the preparation of these and other data and metrics, all such information in this presentation are estimates. There may also be differences in the manner that other parties calculate, report, test or substantiate such information compared to the Company, which means that the information reported by other parties may not be comparable to that reported by the Company. Further, as climate and other sustainability-related reporting evolves, there could be changes to the market practices, taxonomies, methodologies, criteria and standards that are used to classify, measure, test, substantiate and report on such matters, so this information may not be comparable to information prepared or reported by the Company at a different time. However, all information in this presentation concerning the Company's climate and other sustainability-related objectives and impacts are based on what the Company believes to be adequate and proper substantiation in accordance with internationally recognized methodology.

**Further Information** – For further details on Agnico Eagle's second quarter 2024 results, please see the Company's news release dated July 31, 2024.

**Front Cover** – Agnico Eagle's Kittila mine shaft located in northern Finland.



# Agnico Eagle: A High-Quality, Low-Risk Senior Gold Producer



## Low-Risk Mining Jurisdictions

Established competitive advantage in regions with multi-decade geological potential and political stability



## Highest Quality Senior Gold Producer

Disciplined capital investments based on technical and regional knowledge



## Uniquely Positioned

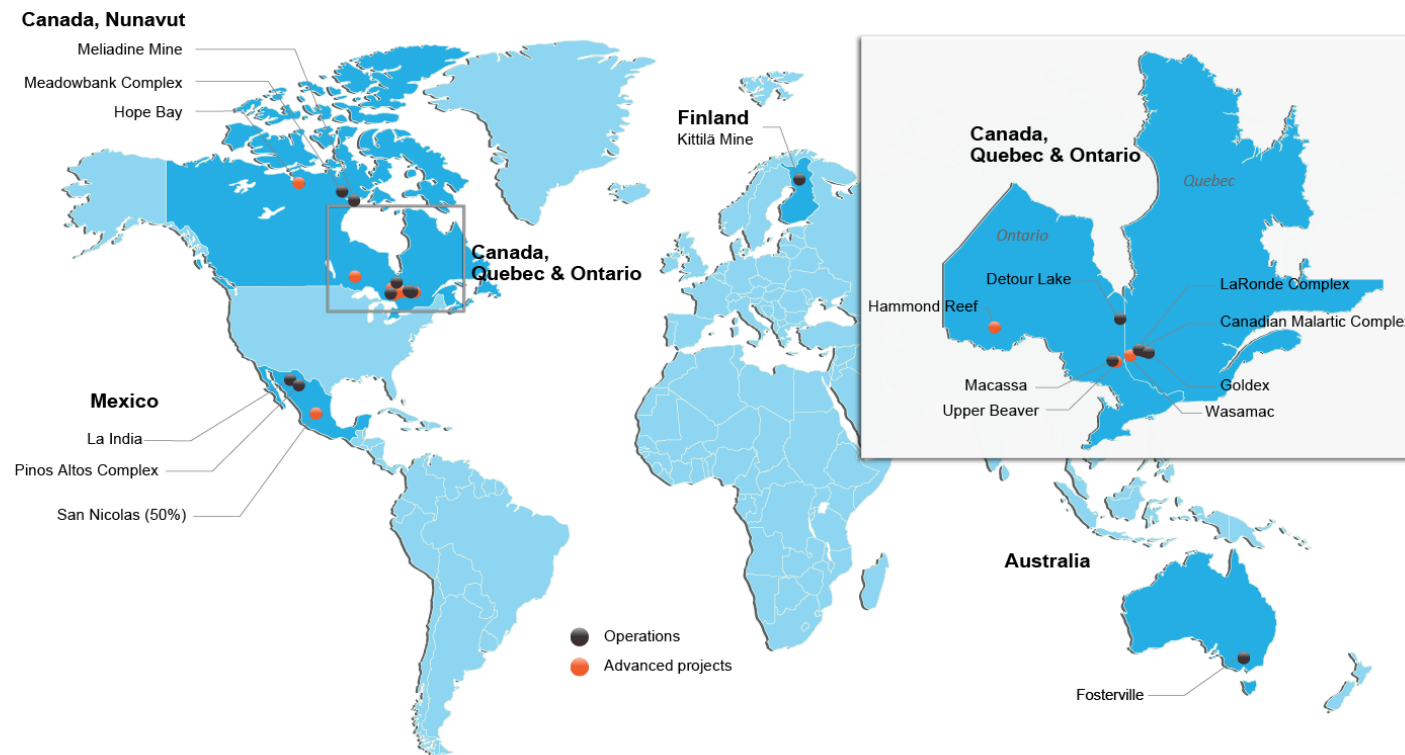
High-quality project pipeline in core operating regions with unique potential to leverage existing assets



## Strong Financial Returns

Emphasis on per share value creation; 41 consecutive years of dividend payments

## Third Largest Gold Producer Proven Geological Potential in Premier Jurisdictions



## 2024 Guidance<sup>1</sup>

Gold production – 3.35 to 3.55Moz  
Total cash costs – \$875 to \$925 /oz<sup>2</sup>

## Strong Mineral Reserve Base<sup>3</sup>

P&P: 52 Moz  
M&I: 42 Moz  
Inferred: 37 Moz

<sup>1</sup> See AEM February 15, 2024 news release for 2024 Guidance

<sup>2</sup> Total cash costs per ounce is a non-GAAP measure, see *Notes to Investors Regarding Certain Measures of Performance* in this presentation

<sup>3</sup> See appendix for detailed breakdown of mineral reserves and mineral resources as at December 31, 2023, as at March 31, 2024 for Detour Lake, and as at June 30, 2024 for Upper Beaver

# Track Record of Value Creation

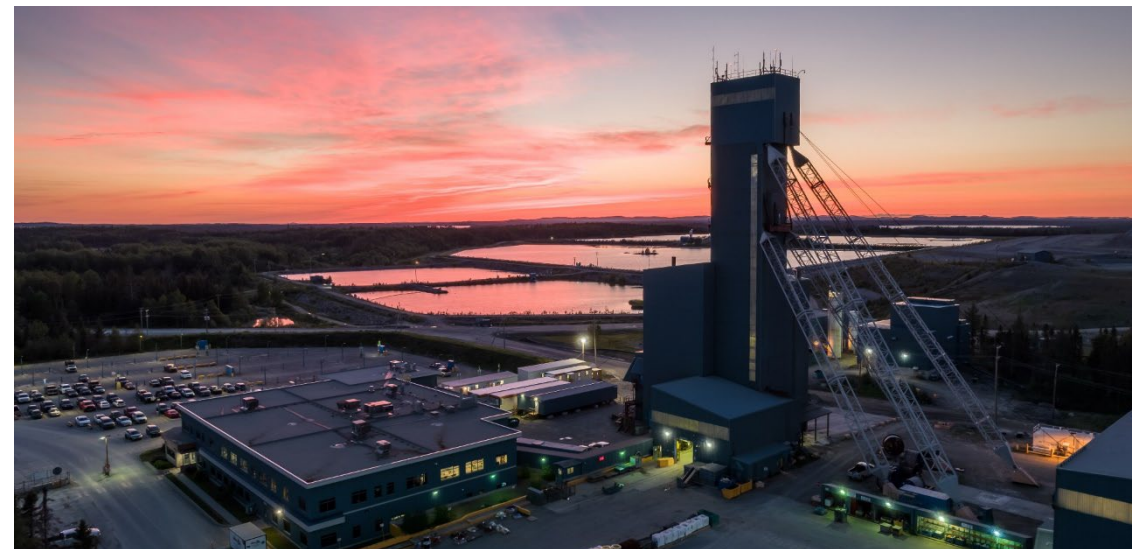
Building a Portfolio of High-Quality Assets in Premier Mining Jurisdictions that Offer Superior Geological Potential

- Systematically built a low risk, manageable business
- Focused on growing profitable gold production and building per share value
- Long history of dependable capital returns to shareholders

	2005	2024E
Operating Mines	1	11
Operating Countries	1	4
Gold Production (koz)	240	3,450 <sup>1</sup>
Gold Production (oz/1,000 shares)	2.7	6.9
Annualized Dividend (\$/share)	\$0.03	\$1.60 <sup>2</sup>

<sup>1</sup> See AEM February 15, 2024 press release for 2024 Guidance

<sup>2</sup> Dividend annualized for 2024 based on H1 2024 actuals; Q3 and Q4 dividends assume consistent payment as per Q2; Q3 and Q4 dividends have not yet been declared or approved



Penna headframe at the LaRonde complex

Price Performance	2005	2024	CAGR
Agnico Eagle <sup>3</sup>	\$13.36	\$81.47	9.6%
Gold Spot <sup>4</sup>	\$429.35	\$2,503.37	9.4%
Gold Equity Index (XAU) <sup>5</sup>	\$95.65	\$153.91	2.5%
S&P 500 <sup>5</sup>	\$1,202.08	\$5,648.40	8.2%

<sup>3</sup> Share price on the New York Stock Exchange as at January 3, 2005 and as at August 30, 2024

<sup>4</sup> Settlement spot gold price per ounce per S&P Global as at January 3, 2005 and as at August 30, 2024

<sup>5</sup> Index price on the New York Stock Exchange as at January 3, 2005 and August 30, 2024, based on the weighted average market capitalization of each company included in the index



# Strong Performance Continues to Demonstrate Strength of Business



Pinos Altos shaft



Barnat open pit at the Canadian Malartic complex



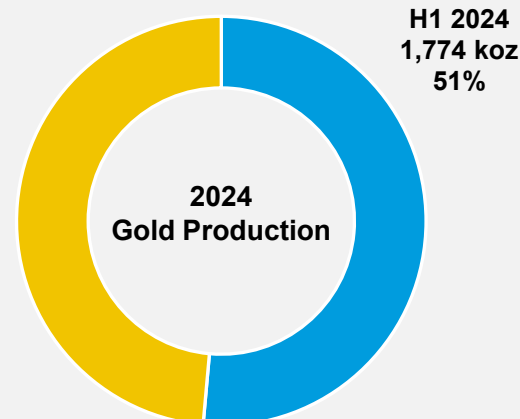
Detour Lake mill



Kittila headframe

	2024E Guidance <sup>1</sup>	H1 2024 Actual
Gold Production (Moz)	3.35 – 3.55	1.77
Production Costs (\$/oz)	–	\$877
Total Cash Costs <sup>2</sup> (\$/oz)	\$875 – \$925	\$885
AISC <sup>2</sup> (\$/oz)	\$1,200 – \$1,250	\$1,179
Capital Expenditures <sup>2,3</sup> (\$M)	\$1,600 – 1,700	\$700
Capitalized Exploration <sup>4</sup> (\$M)	~\$190	\$80
Exploration Expense <sup>4,5</sup> (\$M)	~\$270	\$106

## Well Positioned to Achieve 2024 Gold Production and Cost Guidance



- Consistently demonstrating strong operational performance and cost control
- Advancing key project pipeline with the Detour Lake underground and Upper Beaver project updates in June and July 2024, respectively
- Positive exploration results at Detour Lake, Canadian Malartic and Hope Bay support approval of \$50M supplemental exploration budget

<sup>1</sup> See AEM February 15, 2024 news release for 2024 Guidance

<sup>2</sup> These are non-GAAP measures, see *Notes to Investors Regarding Certain Measures of Performance* in this presentation

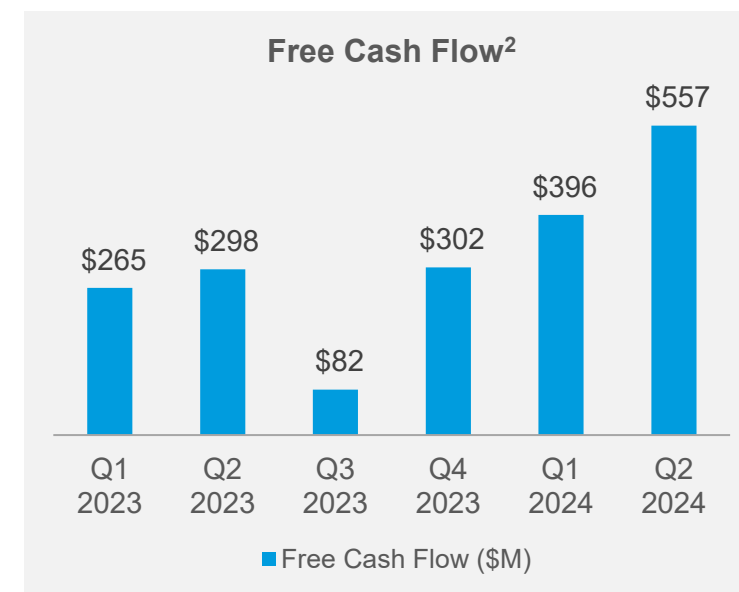
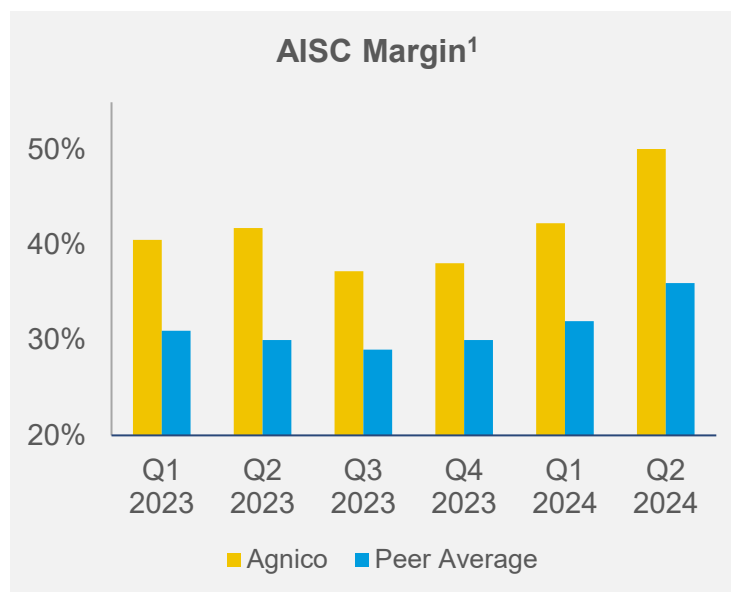
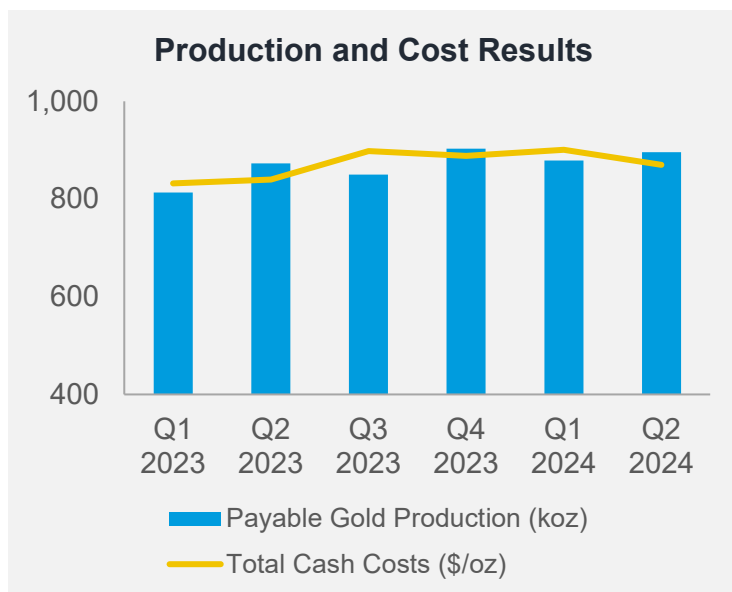
<sup>3</sup> Excludes capitalized exploration

<sup>4</sup> See AEM July 31, 2024 news release for updated exploration guidance

<sup>5</sup> Includes corporate development costs

## Margin Expansion Drives Strong Financial Results

- Operational performance and industry leading costs are key drivers of strong financial results over last few quarters
- Focus on cost control in a rising gold price environment has resulted in growing AISC margin<sup>1</sup>, leading the peer group
- Q2 2024 was the third consecutive quarter of record operating margin<sup>2</sup> and free cash flow<sup>2</sup>



<sup>1</sup> Source: Scotiabank GBM; AISC margin is calculated by Scotiabank GBM as realized gold price/oz less AISC/oz, divided by realized gold price/oz

<sup>2</sup> These are non-GAAP measures, see *Notes to Investors Regarding Certain Measures of Performance* in this presentation

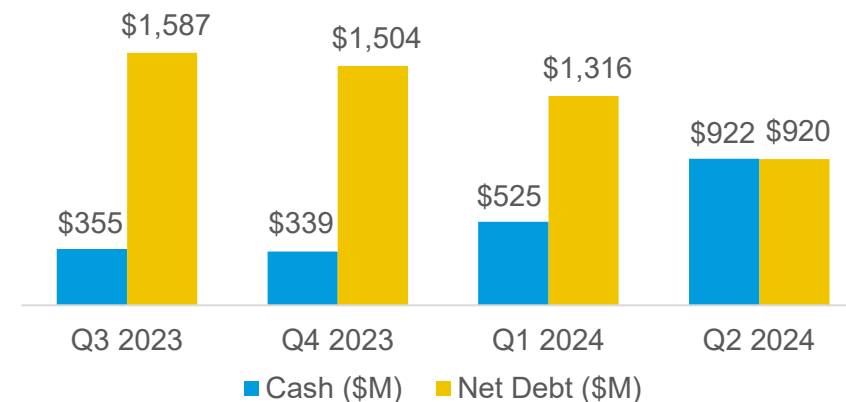
# Balance Sheet Strength and Financial Flexibility

## Strong Cash Flow Generation Enhances Investment Grade Balance Sheet

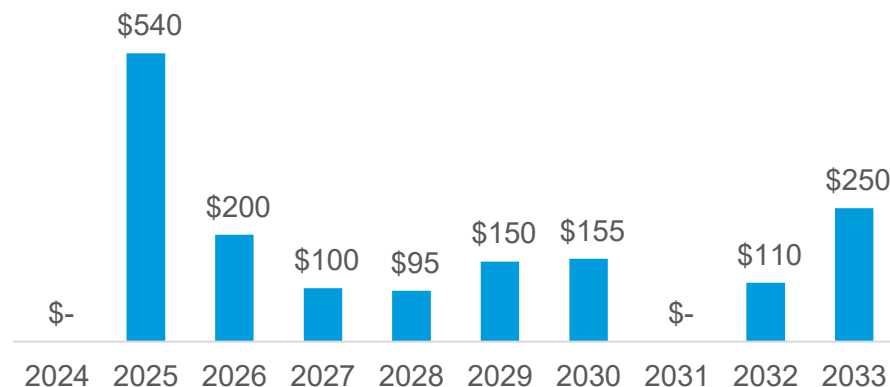
### Strengthening Balance Sheet

- Strong liquidity – \$922M cash and \$2B undrawn credit facility (excluding \$1B accordion) as at June 30, 2024
- Current debt of \$740M and long-term debt of \$1,102M as at June 30, 2024
- Significant reduction in net debt<sup>1</sup> to \$920M as at June 30, 2024
- Debt repayments made in July 2024:
  - \$100M on senior notes on maturity
  - \$150M accelerated payment on \$600M term loan facility
- Strong business and credit profile
  - Moody's Ratings – upgraded investment grade credit rating to Baa1 (Stable Outlook) from Baa2 in Q1 2024
  - Fitch – investment grade credit rating of BBB+ (Stable Outlook)

### Cash and Net Debt<sup>1</sup> Position



### Debt Maturities<sup>2</sup>



<sup>1</sup> Net debt is a non-GAAP measure, see *Notes to Investors Regarding Certain Measures of Performance* in this presentation

<sup>2</sup> Figures as at July 31, 2024, in millions



# Disciplined Capital Allocation Strategy

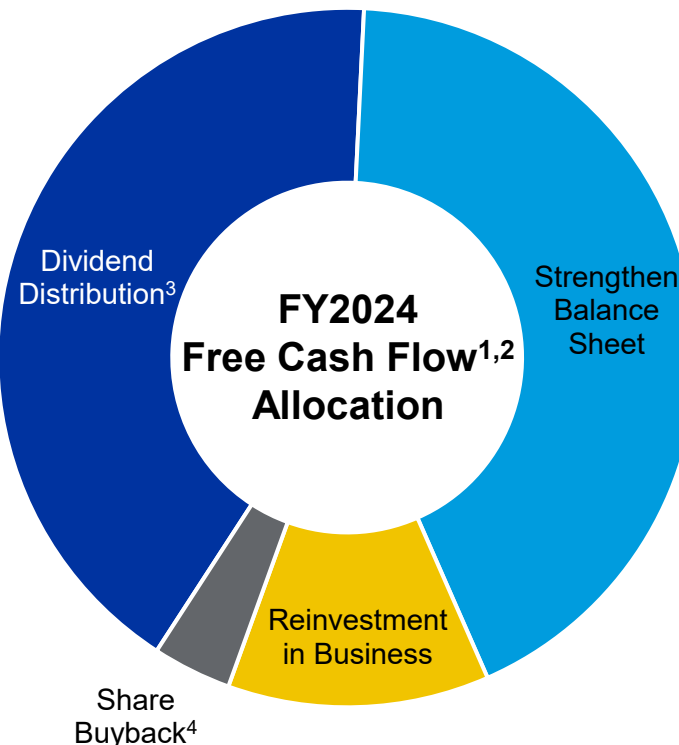
## Continued Focus on Returns to Shareholders and Strengthening the Balance Sheet

### Dividend Distribution

- Dividends paid since 1983
- Over \$3B cumulative dividends paid to date
- Quarterly dividend currently \$0.40 per share

### Share Buyback

- Ability to purchase up to \$500M of common shares through the NCIB
- Repurchased \$70M of common shares in H1 2024 through the NCIB at an average price of \$61.40



### Strengthening Balance Sheet

- Continue to build strong cash balance
- \$540M debt due in next 12 months – look to repay with excess cash or opportunistically refinance

### Reinvestment in Business

- Organic growth of pipeline projects
- Exploration program driven by results
- Toehold investments

<sup>1</sup> Free cash flow is a non-GAAP measure, see *Notes to Investors Regarding Certain Measures of Performance* in this presentation

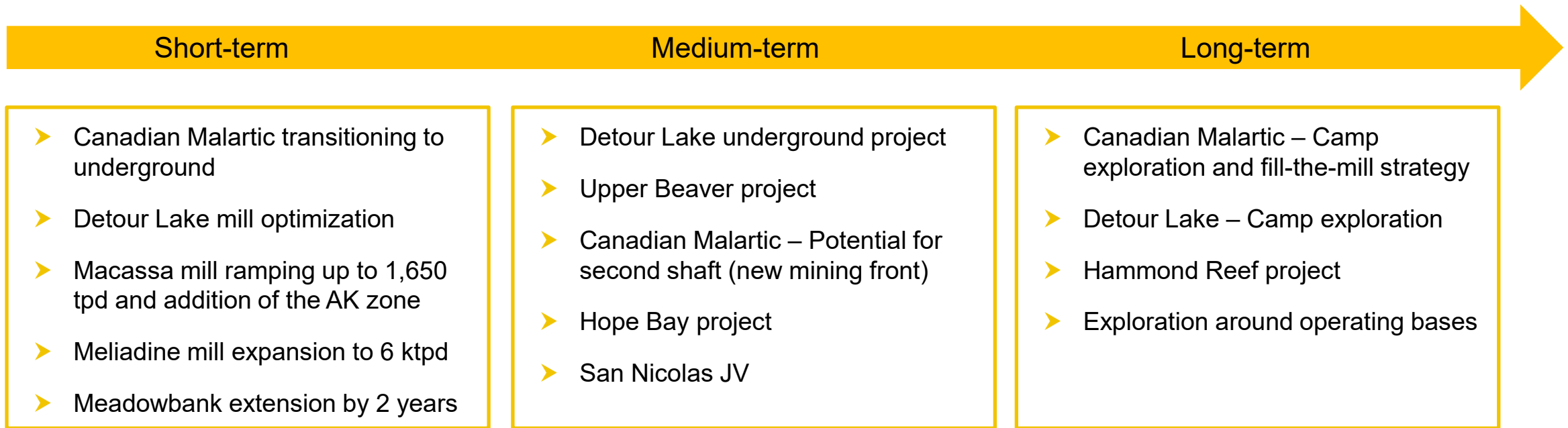
<sup>2</sup> Free cash flow for the full year 2024 is estimated by adding: (i) actual H1 2024 results and (ii) estimated H2 2024 free cash flow based on spot gold price of ~\$2,300/oz; chart segments are indicative only

<sup>3</sup> Dividend annualized for 2024 based on H1 2024 actuals; Q3 and Q4 dividends assume consistent payment as per Q2; Q3 and Q4 dividends have not yet been declared or approved

<sup>4</sup> Share buyback represents \$70M of common shares purchased in H1 2024

# High-Quality Business Positioned to Generate Strong Returns

- Systematically built a low-risk, manageable business based on a simple strategy that fits our skill set
- Focused on realizing the full potential of our regional operating bases from low-risk organic growth
- Maintaining capital discipline, with the sequencing of projects and leveraging of internal resources



- Continuing to build on the geological potential of the regions in which we operate through the drill bit and a strategy of opportunistic investments based on knowledge

# Abitibi Ontario – A Long-term Operating Platform with Room to Grow

## 2024 Guidance<sup>1</sup>

Gold production – 965 koz  
Total cash costs<sup>2</sup> – \$769/oz

## Mineral Reserve Base<sup>3</sup>

P&P: 25.1 Moz  
M&I: 24.1 Moz  
Inferred: 12.6 Moz

- Over 50 years in Abitibi region – strong technical expertise and an established network with employees, contractors, suppliers and government
- Detour Lake mine and the consolidation of the Kirkland Lake camp create a leading position in Ontario
- Working closely with governments to shape broader programs in Ontario
  - Secured C\$10M funding from Skills Development Fund to support training of apprentices

~3,300

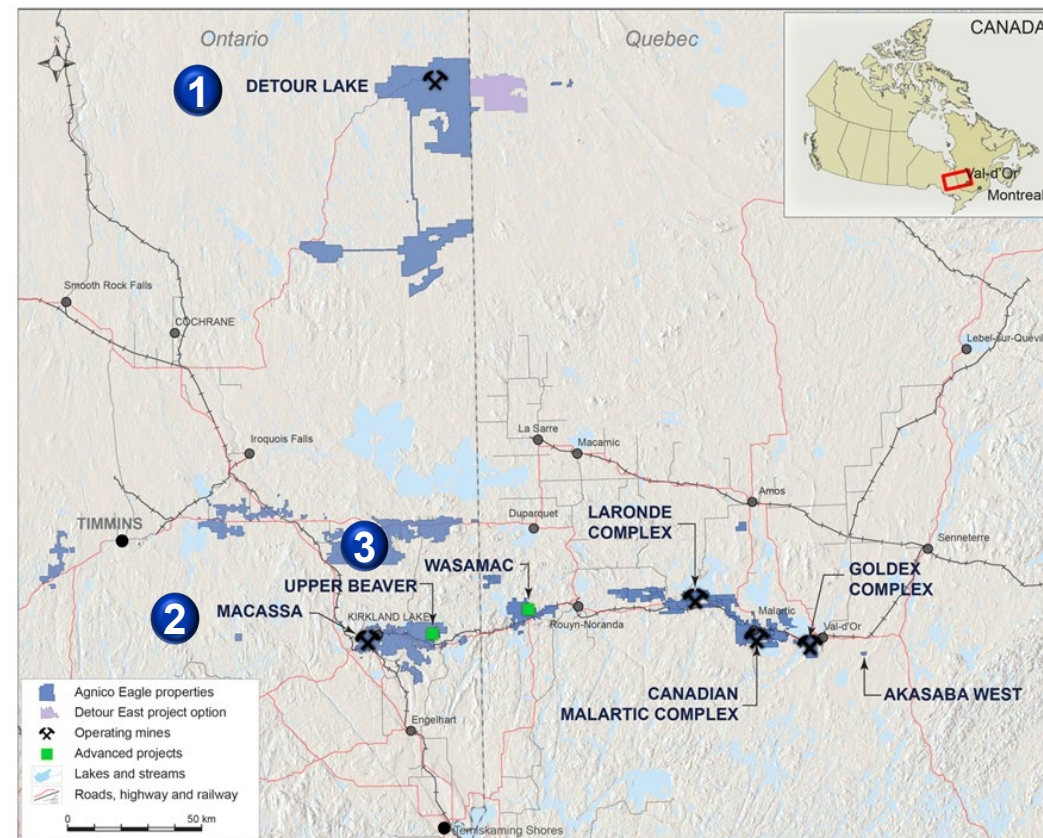
Employees and Contractors

~8.8%<sup>4</sup>

Site Employee Turnover

~\$1B

Local Procurement Spend



- 1 Detour Lake** – One of the ten largest gold mines in the world with a pathway to become a 1 Moz/yr producer
- 2 Macassa** – One of the highest grade gold mines in the world, with over 90 years of operations
- 3 Upper Beaver** – Advanced exploration project with low-risk opportunity to grow production in a prolific camp

<sup>1</sup> See AEM February 15, 2024 news release for 2024 Guidance

<sup>2</sup> Total cash costs per ounce is a non-GAAP measure, see *Notes to Investors Regarding Certain Measures of Performance* in this presentation

<sup>3</sup> See appendix for detailed breakdown of mineral reserves and mineral resources as at December 31, 2023, as at March 31, 2024 for Detour Lake, and as at June 30, 2024 for Upper Beaver

<sup>4</sup> Calculation based on permanent full-time employees at Detour and Macassa as at December 31, 2023



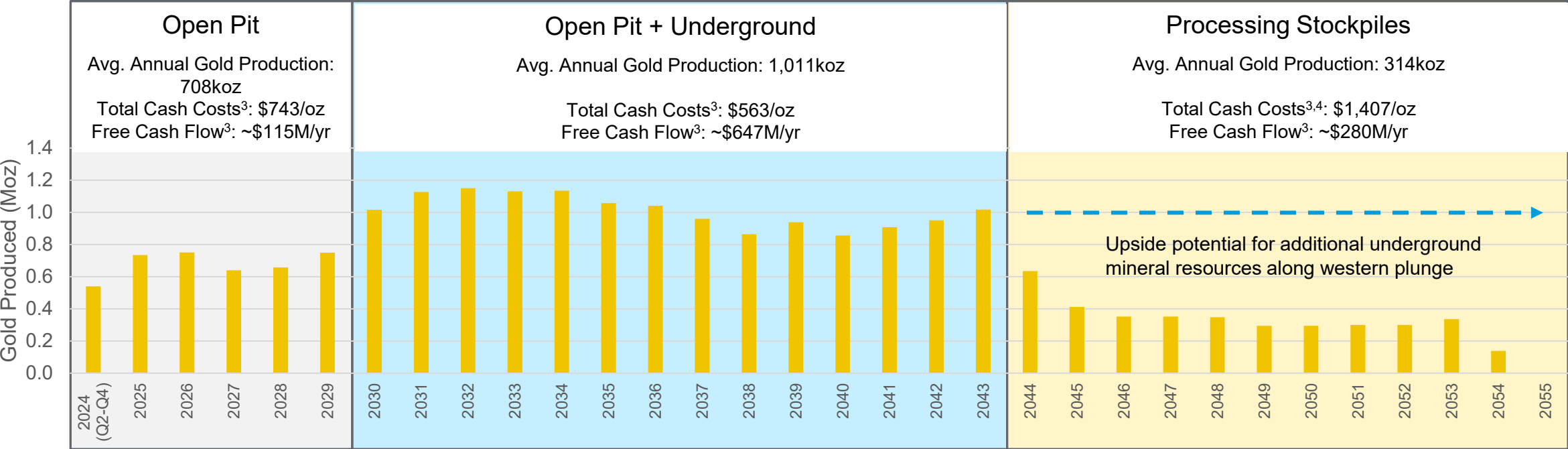
# Detour Lake – Pathway to 1 Million Ounce Producer



- Largest gold producing open pit mine in Canada with 19.7M oz of mineral reserves and mine life until 2054<sup>1</sup>
- Underground project starting in 2030 provides strong risk-adjusted return on capital<sup>1</sup> at an NPV of \$886M and an IRR of 18%<sup>2</sup>
  - Leverages existing expertise with bulk underground mining in the Abitibi
  - Low-risk, disciplined capital approach with brownfield expansion – approved ~\$100M investment over 3 years



Detour Lake operations



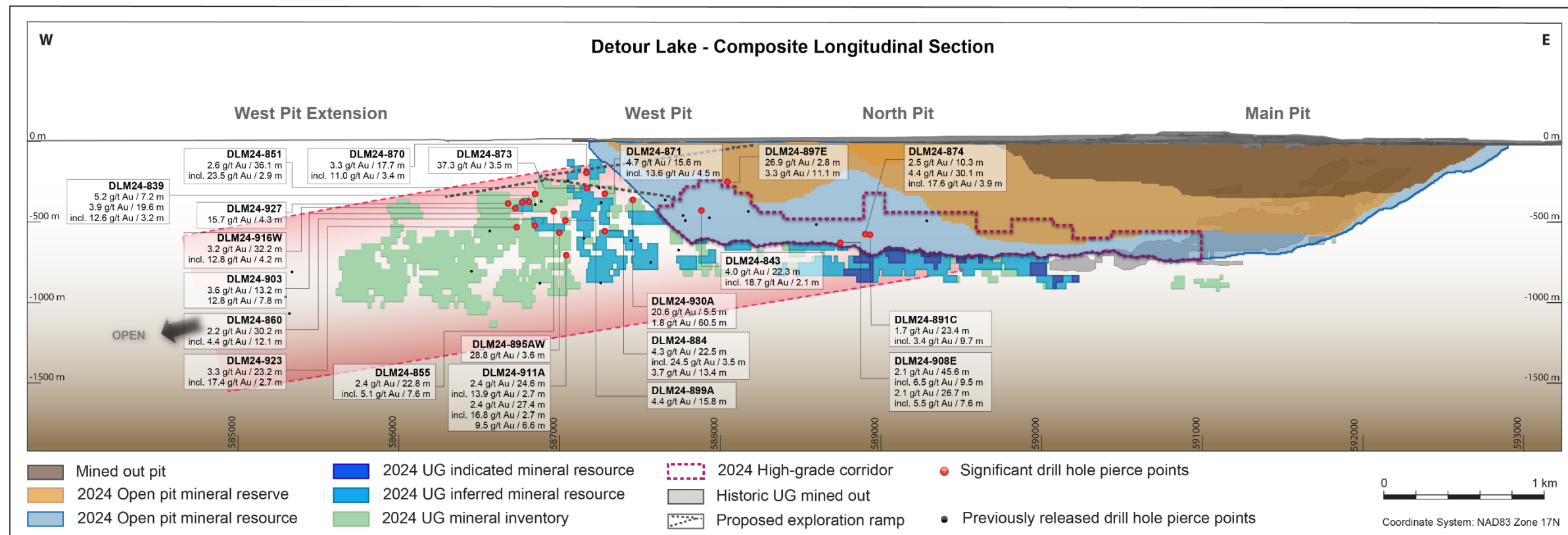
<sup>1</sup> See AEM June 19, 2024 news release and appendix for further details

<sup>2</sup> Au = \$1,900/oz, FX = 1.34 CAD/USD

<sup>3</sup> These are non-GAAP measures, see *Notes to Investors Regarding Certain Measures of Performance* in this presentation

<sup>4</sup> Higher cash cost in stockpile reclaim period reflects drawdown of long-term low-grade stockpiles, lower head grade, and re-handling costs. Open pit feed offset by underground to stockpile reclaim period is 52Mt at 0.51g/t.

# Detour Lake – Potential to Expand Underground Mineralization



## Detour Lake Underground:

Infill drilling into the high-grade corridor at underground depths in the West Pit zone and West Pit Extension continued to confirm the grades and continuity of the mineralized structure

## Highlight Intercepts:

- 4.0 g/t gold over 22.3m at 413m depth
- 4.4 g/t gold over 30.1m at 550m depth
- 20.6 g/t gold over 5.5m at 280m depth
- 4.7 g/t gold over 15.6m at 313m depth

# Abitibi Quebec – Surfacing New Potential in Prolific Camp

## 2024 Guidance<sup>1</sup>

Gold production – 1,055 koz  
Total cash costs<sup>2</sup> – \$927/oz

## Mineral Reserve Base<sup>3</sup>

P&P: 11.8 Moz  
M&I: 6.4 Moz  
Inferred: 12.6 Moz

- Over 50 years operating in the region – Strong technical expertise and an established network with employees, contractors, suppliers and government
- Electricity ~100% from renewable sources
- Collaboration agreements with First Nations: Canadian Malartic (2020), LaRonde (2023)
- Good Neighbour guide and monitoring committee in place at every site with +90% satisfaction from citizens in 2023-2024

~4,800

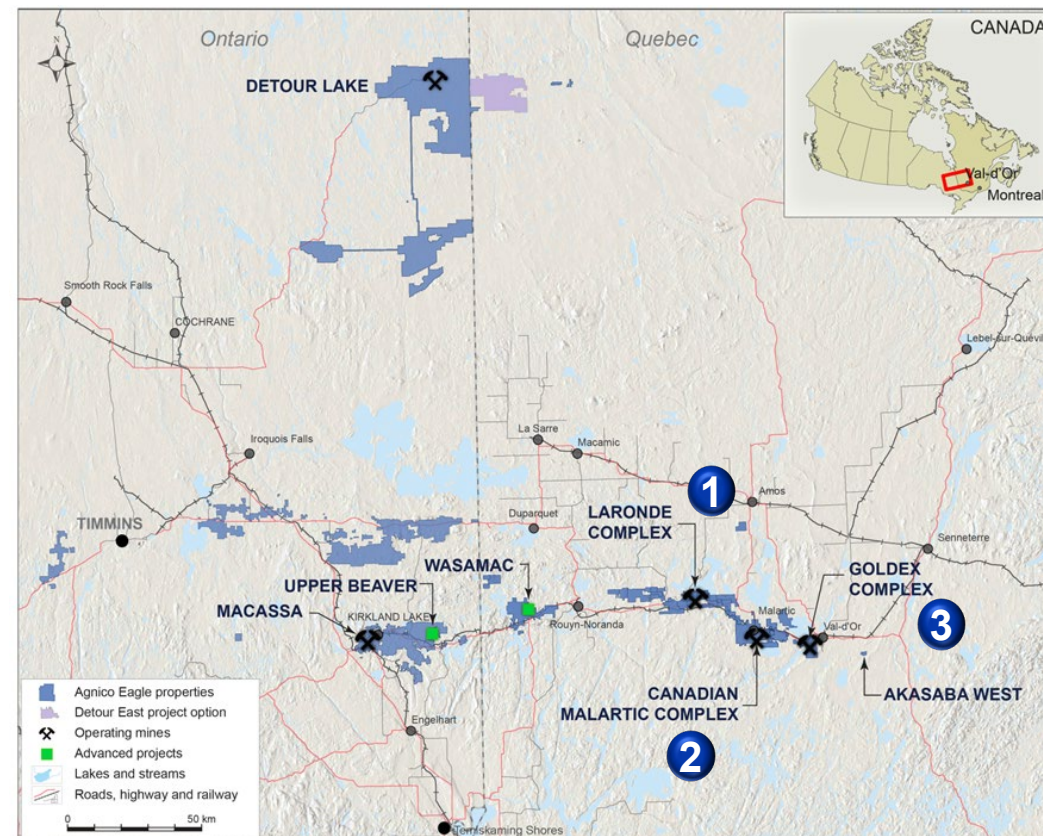
Employees and Contractors

~4.5%<sup>4</sup>

Site Employee Turnover

~\$1.4B

Local Procurement Spend



- 1 LaRonde** – One of the deepest operating mines in the Western Hemisphere, operating since 1988
- 2 Canadian Malartic** – One of the ten largest gold mines in the world, with potential for growth
- 3 Goldex** – Solid and stable gold producer with zero lost time accidents in 2023

<sup>1</sup> See AEM February 15, 2024 news release for 2024 Guidance

<sup>2</sup> Total cash costs per ounce is a non-GAAP measure, see *Notes to Investors Regarding Certain Measures of Performance* in this presentation

<sup>3</sup> See appendix for detailed breakdown of mineral reserves and mineral resources as at December 31, 2023

<sup>4</sup> Calculation based on permanent full-time employees at Laronde, Goldex and Canadian Malartic complexes as at December 31, 2023

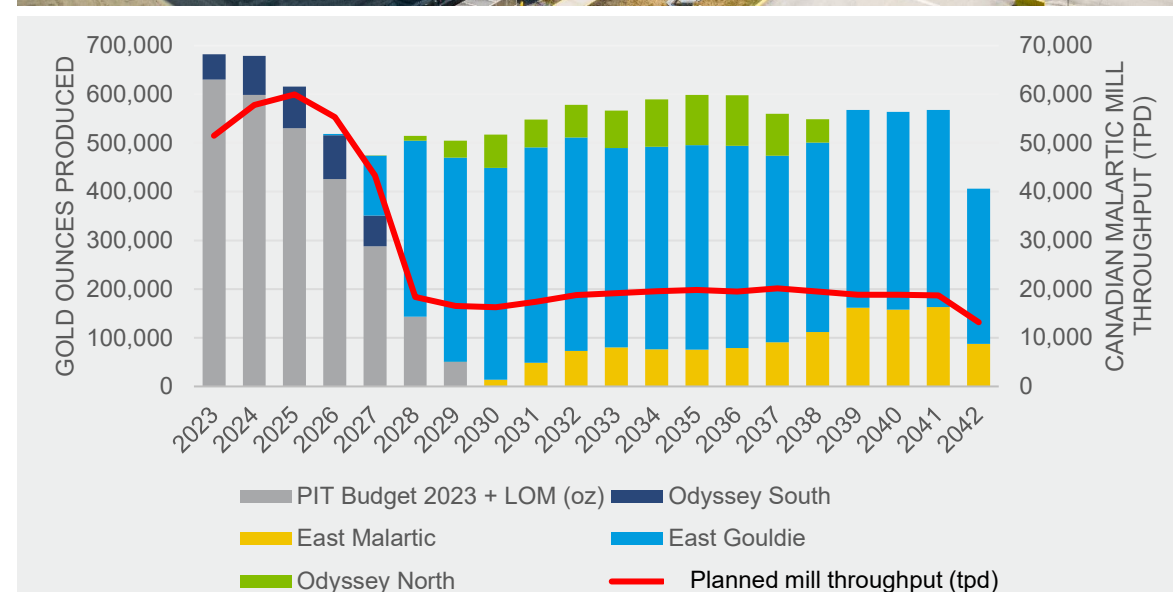


# Canadian Malartic Complex – One of the Top 10 Largest Gold Mines Globally

- Second largest producing gold mine in Canada with 7.9M oz of mineral reserves<sup>1</sup>
- Canadian Malartic open pit mine life until 2029
- Odyssey underground mine life until 2042
- 2024E: gold production 630k oz; total cash costs \$926/oz<sup>2</sup>

## Transitioning to Canada's Largest Underground Gold Mine

- Construction
  - Ramp development ahead of schedule, third production level of East Gouldie deposit reached in Q2 2024
  - Potential to accelerate initial production from East Gouldie
  - Shaft sinking underway with completion expected in 2027
  - Surface construction ~65% complete
- Production
  - Open pit mine life until 2029 and underground mine life until 2042
  - ~40 ktpd excess mill capacity expected starting in 2028



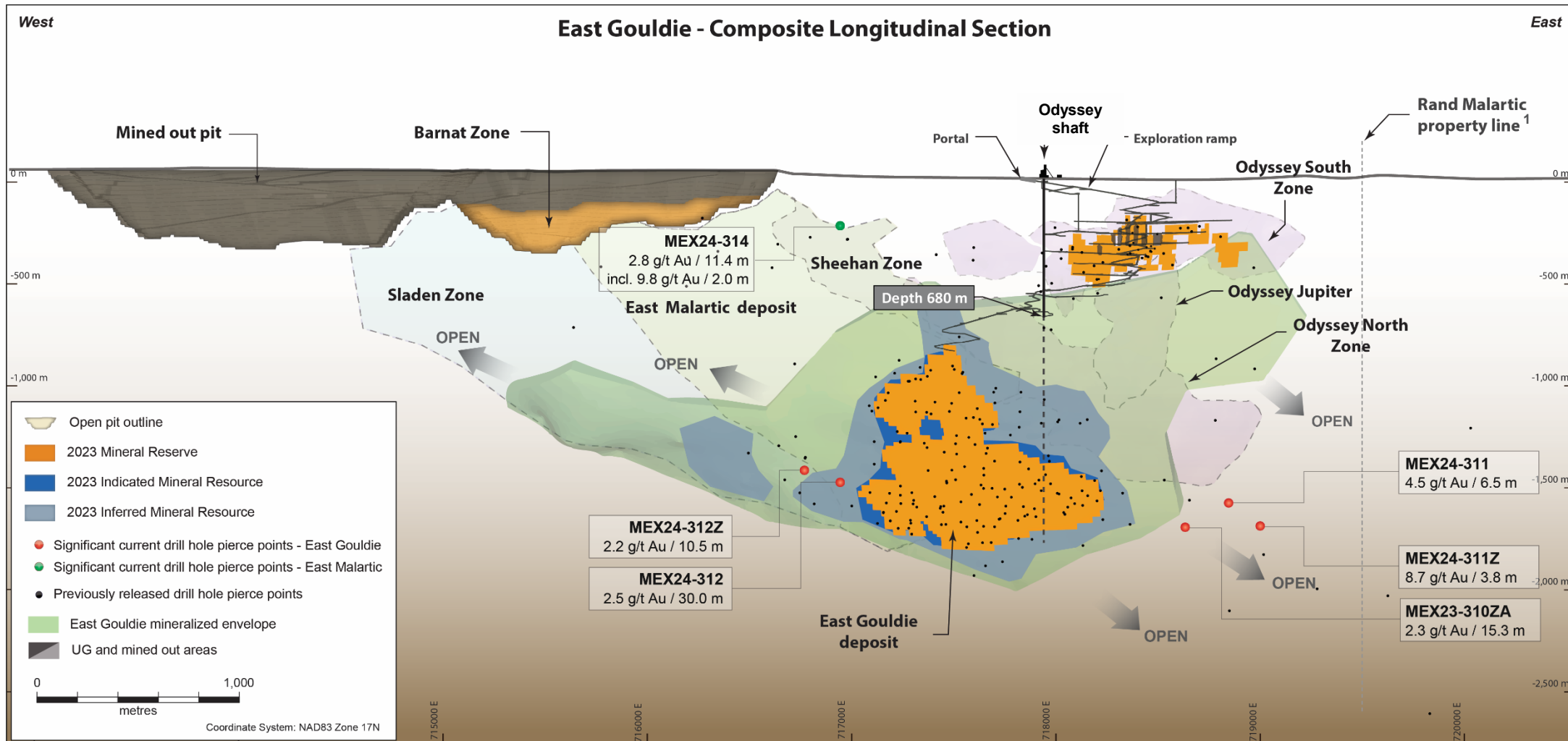
<sup>1</sup> See AEM February 15, 2024 news release and appendix for detailed breakdown of mineral reserves and mineral resources

<sup>2</sup> See AEM February 15, 2024 news release for 2024 Guidance

# Fill the Mill – Expansion of East Gouldie Deposit to the East and West



AGNICO EAGLE



## East Gouldie deposit at the Odyssey mine:

- Recent exploration drilling continues to return good results in the eastern and western extensions of the East Gouldie deposit
- 5.2Moz at 3.4g/t in mineral reserves and 3.3 Moz at 2.3g/t in inferred mineral resources<sup>2</sup>
- Longer term potential for second production shaft

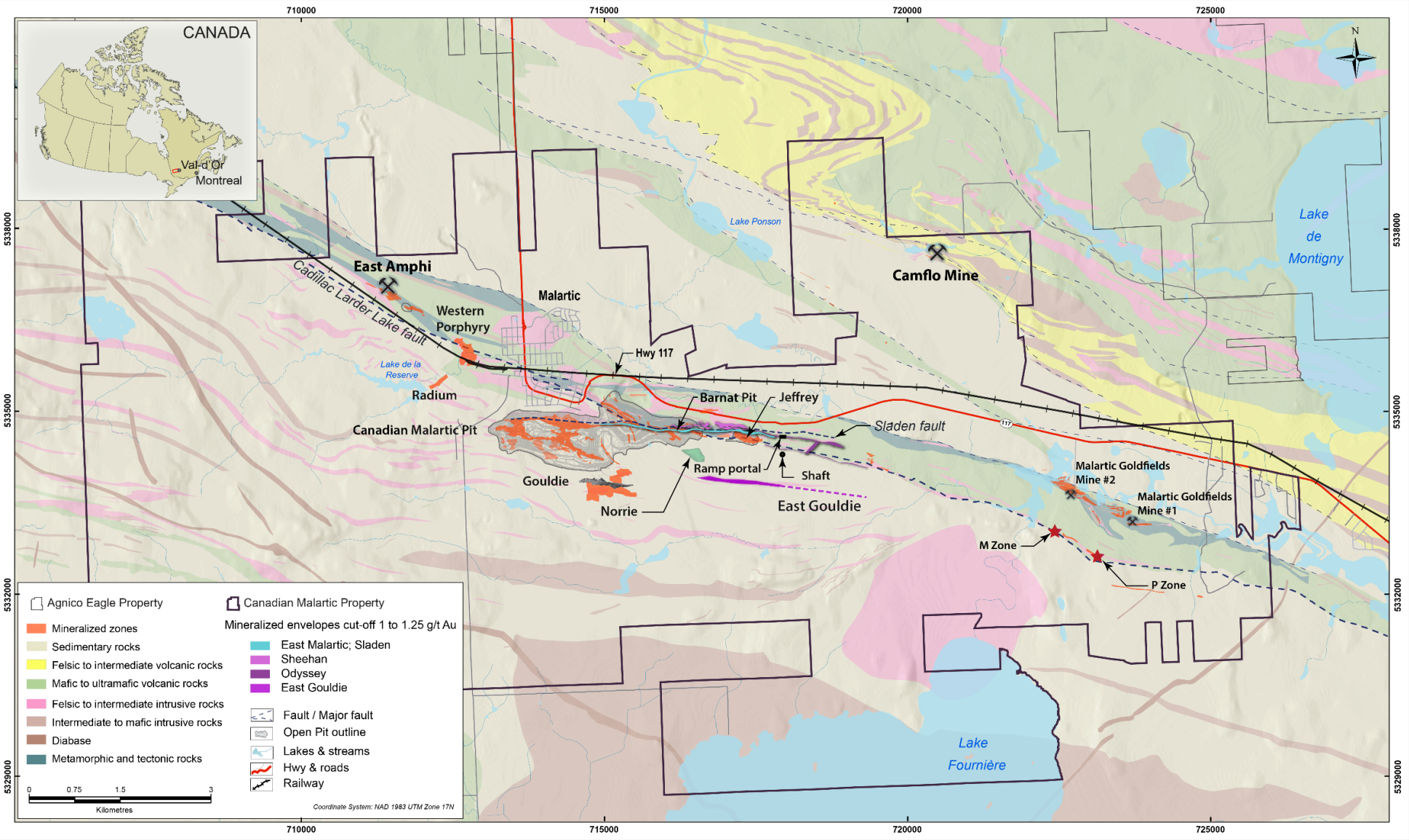
## Highlight Intercepts:

- 4.5 g/t gold over 6.5m at 1,571m depth and 800m east of current mineral reserves
- 2.5 g/t gold over 30.0m at 1,473m depth and 100m west of current mineral reserves

<sup>1</sup> The Rand Malartic property is not subject to any royalty agreements and encumbrances <sup>2</sup> See appendix for detailed breakdown of mineral reserves and mineral resources as at December 31, 2023

# Fill the Mill – Satellite Potential within the Malartic Camp

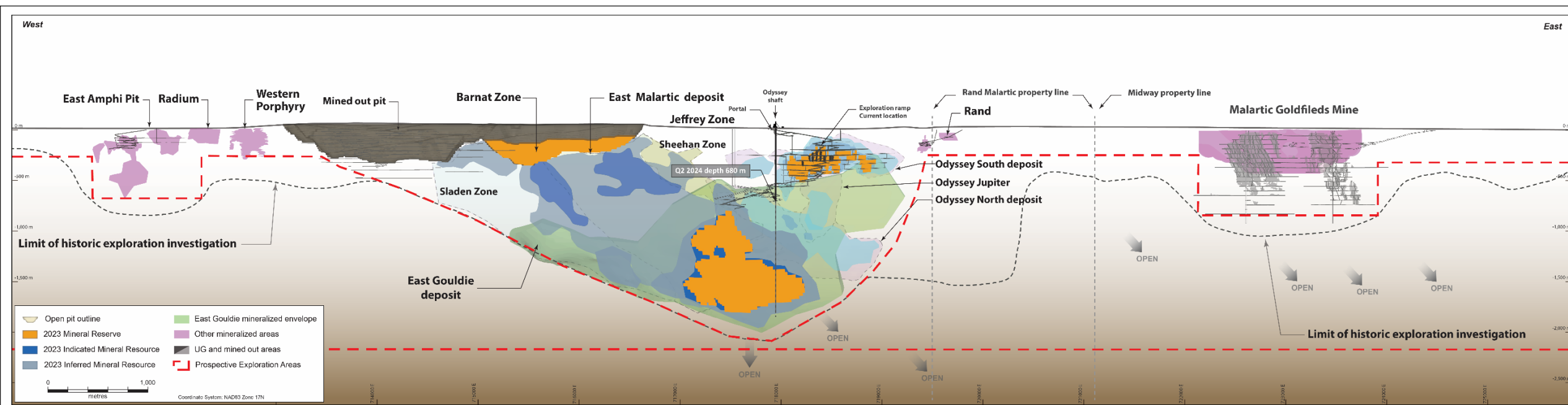
## Plan View of the Canadian Malartic Property





# Fill the Mill – Satellite Potential within the Malartic Camp

## Composite Longitudinal Section of the Canadian Malartic Property

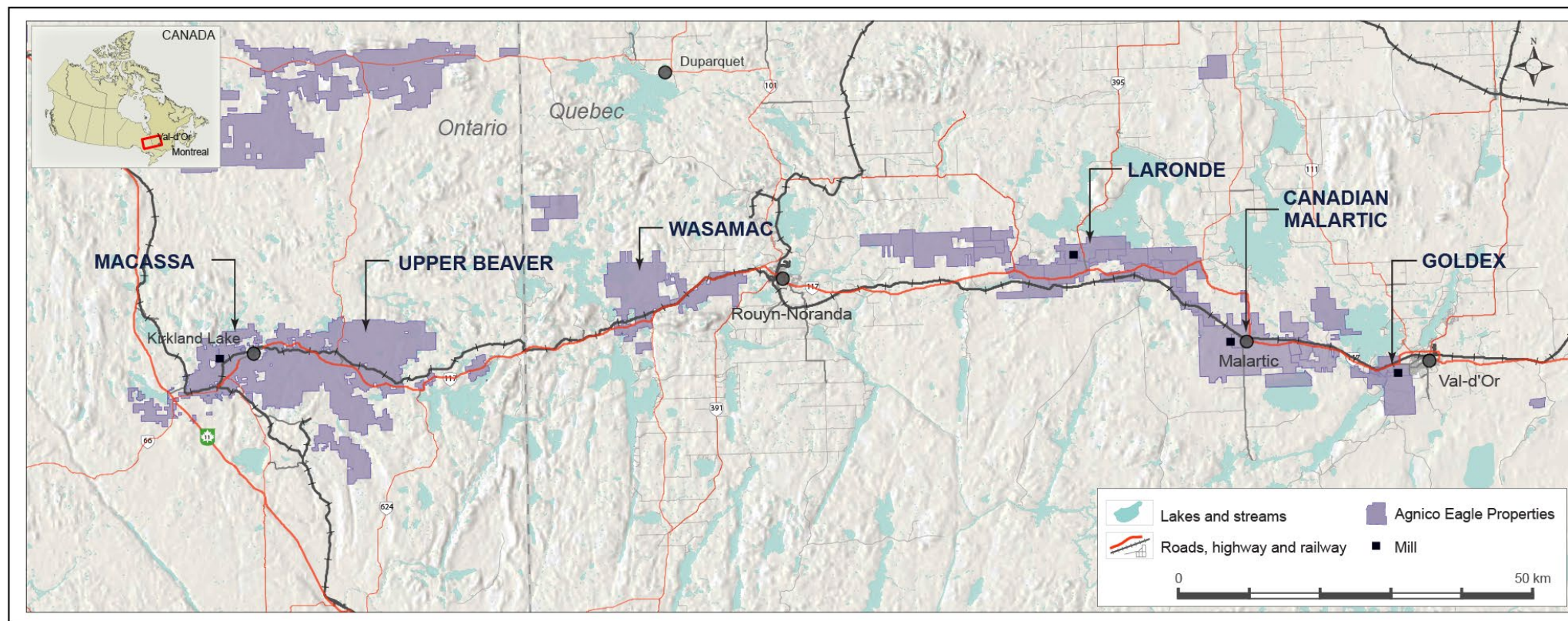


### ► Satellite potential within the Canadian Malartic property

- ~15 Moz historical production and ~16 Moz discovered since 2014
- Expanding exploration efforts along the 16.5km belt from surface and eventually from underground to test the full potential of this area
- Historical drilling typically shallow and restricted to volcanic rocks and intrusions

# Fill the Mill – Regional Potential

## Agnico Land Package within the Abitibi Region



- Regional potential:
  - Wasamac project – M&I mineral resources 2.2 Moz at 2.4g/t; potential to haul ore to Canadian Malartic
  - Regional exploration along Abitibi land package
- Toll Milling:
  - Opportunity to be processing partner of choice for other companies in the region



# Nunavut – Capitalizing on Our Nunavut Expertise

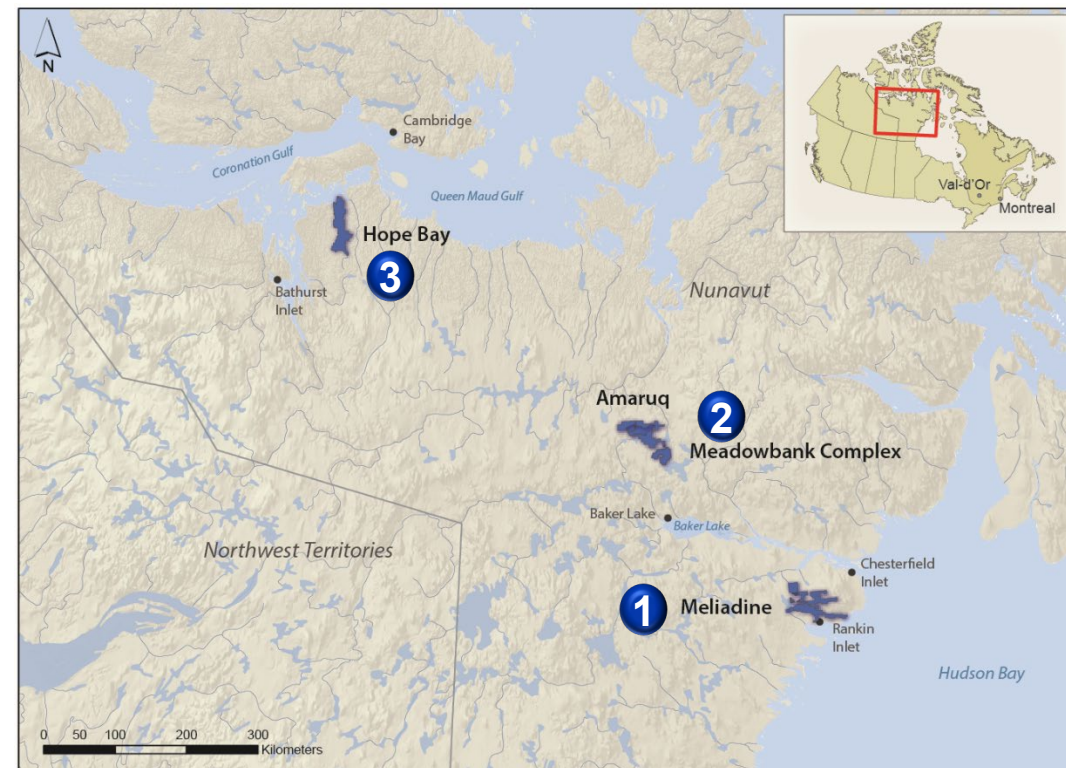
## 2024 Guidance<sup>1</sup>

Gold production – 860 koz  
Total cash costs<sup>2</sup> – \$999/oz

## Mineral Reserve Base<sup>3</sup>

P&P: 8.7 Moz  
M&I: 4.5 Moz  
Inferred: 5.0 Moz

- Agnico represents ~25% of total GDP, with mining activities ~47% of total GDP
- Over 17 years of exploration and operations experience in region – supported by Abitibi, Quebec platform
- Integrating Inuit culture and traditional knowledge
  - 15% employees hired locally
  - 323 Inuit employees



~3,900

Employees and Contractors

~12.2%<sup>4</sup>

Site Employee Turnover

~\$600M

Local Procurement Spend

- 1 Meliadine** – Commissioning expansion to 6,000 tpd
- 2 Meadowbank** – Extension of Amaruq mine life to 2028
- 3 Hope Bay** – Potential to transition to Hope Bay project near end of Amaruq mine life

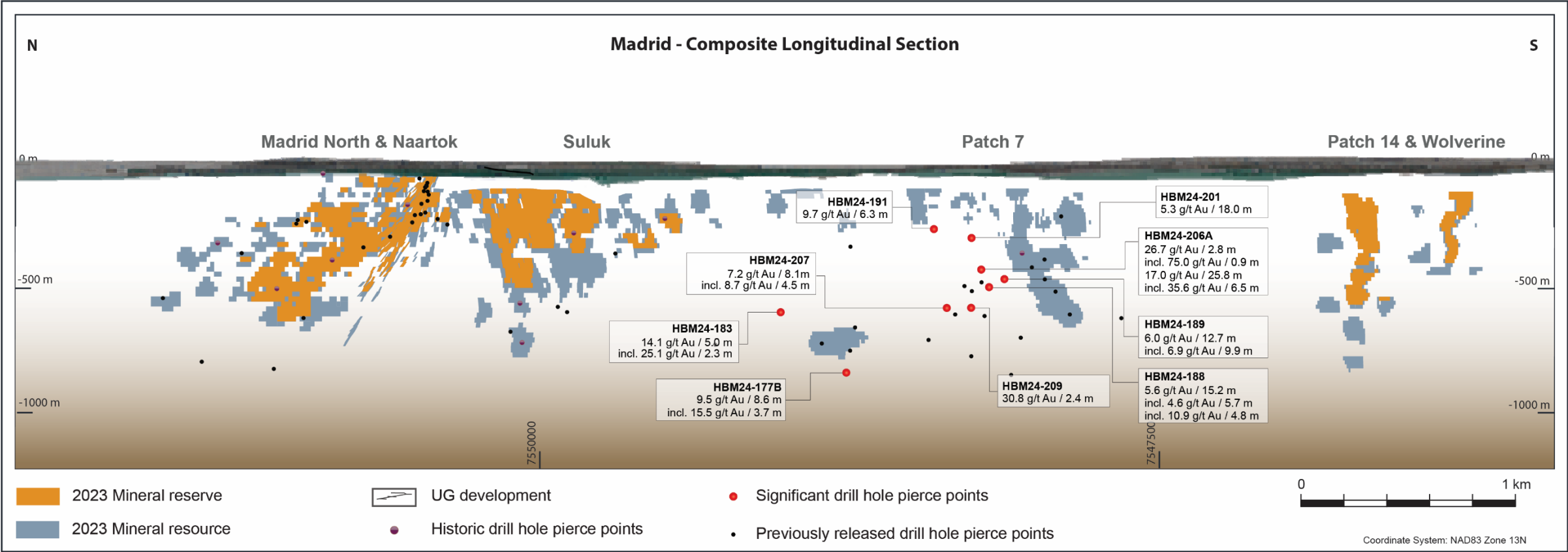
<sup>1</sup> See AEM February 15, 2024 news release for 2024 Guidance

<sup>2</sup> Total cash costs per ounce is a non-GAAP measure, see *Notes to Investors Regarding Certain Measures of Performance* in this presentation

<sup>3</sup> See appendix for detailed breakdown of mineral reserves and mineral resources as at December 31, 2023

<sup>4</sup> Calculation based on permanent full-time employees at Meadowbank complex, Meliadine and Hope Bay as at December 31, 2023





### Madrid deposit in the Patch 7 zone at Hope Bay

Exploration drilling continued to return excellent results, further confirming the larger thicknesses and higher gold grades in this area compared to historical mineral reserves at the Hope Bay mine

### Highlight Intercepts:

- 17.0 g/t gold over 25.8m at 419m depth
- 7.2 g/t gold over 8.1m at 559m depth
- 5.3 g/t gold over 18.0m at 278m depth



## Low-Risk Mining Jurisdictions

Multi-mine, multi-decade geologic potential

Multi-decade political stability

Regional focus maintaining a manageable business



## Highest Quality Senior Gold Producer

High ESG standards with multi-decade investment horizon

Disciplined capital investments based on technical and regional knowledge

Creating value through the drill bit and technical expertise



## Uniquely Positioned

High-quality project pipeline in core operating regions with unique potential to leverage existing assets

Competitive advantage from over 50 years of operations in Canada

Unique mining expertise in Nunavut



## Strong Financial Returns

Emphasis on per share value creation

Strong financial position to fund growth projects, strengthen balance sheet and return capital to shareholders

41 consecutive years of dividend payments

# **FINANCIAL AND OPERATIONS UPDATE**







# Q2 2024 Operational Highlights

## Strong Operational Performance through H1 2024

	Q2 2024				Q2 2024 YTD			
	Gold Production (koz)	Production Costs (\$/oz)	Total Cash Costs <sup>1</sup> (\$/oz)	Operating Margin <sup>1</sup> (\$ millions)	Gold Production (koz)	Production Costs (\$/oz)	Total Cash Costs <sup>1</sup> (\$/oz)	Operating Margin <sup>1</sup> (\$ millions)
LaRonde complex	82	\$775	\$816	\$106	151	\$1,051	\$929	\$198
Canadian Malartic complex	181	\$798	\$871	\$274	368	\$737	\$860	\$476
Goldex	34	\$980	\$864	\$50	68	\$973	\$906	\$90
<b>Total Quebec</b>	<b>297</b>	<b>\$812</b>	<b>\$855</b>	<b>\$430</b>	<b>587</b>	<b>\$845</b>	<b>\$883</b>	<b>\$763</b>
Detour Lake	168	\$715	\$791	\$239	319	\$791	\$829	\$450
Macassa	64	\$797	\$833	\$102	132	\$746	\$770	\$194
<b>Total Ontario</b>	<b>232</b>	<b>\$738</b>	<b>\$803</b>	<b>\$342</b>	<b>451</b>	<b>\$778</b>	<b>\$812</b>	<b>\$644</b>
Meliadine	89	\$969	\$892	\$134	184	\$973	\$918	\$243
Meadowbank complex	126	\$973	\$922	\$186	254	\$933	\$930	\$321
<b>Total Nunavut</b>	<b>215</b>	<b>\$972</b>	<b>\$910</b>	<b>\$320</b>	<b>439</b>	<b>\$950</b>	<b>\$925</b>	<b>\$564</b>
Fosterville	66	\$558	\$608	\$108	123	\$575	\$575	\$196
<b>Total Australia</b>	<b>66</b>	<b>\$558</b>	<b>\$608</b>	<b>\$108</b>	<b>123</b>	<b>\$575</b>	<b>\$575</b>	<b>\$196</b>
Kittila	56	\$1,033	\$1,020	\$76	110	\$1,057	\$1,044	\$131
<b>Total Finland</b>	<b>56</b>	<b>\$1,033</b>	<b>\$1,020</b>	<b>\$76</b>	<b>110</b>	<b>\$1,057</b>	<b>\$1,044</b>	<b>\$131</b>
Pinos Altos	24	\$1,815	\$1,414	\$25	48	\$1,578	\$1,380	\$40
La India	6	\$2,146	\$2,172	\$4	17	\$1,742	\$1,715	\$13
<b>Total Mexico</b>	<b>30</b>	<b>\$1,882</b>	<b>\$1,568</b>	<b>\$29</b>	<b>65</b>	<b>\$1,620</b>	<b>\$1,466</b>	<b>\$53</b>
<b>Consolidated AEM</b>	<b>896</b>	<b>\$862</b>	<b>\$870</b>	<b>\$1,305</b>	<b>1,774</b>	<b>\$877</b>	<b>\$885</b>	<b>\$2,351</b>

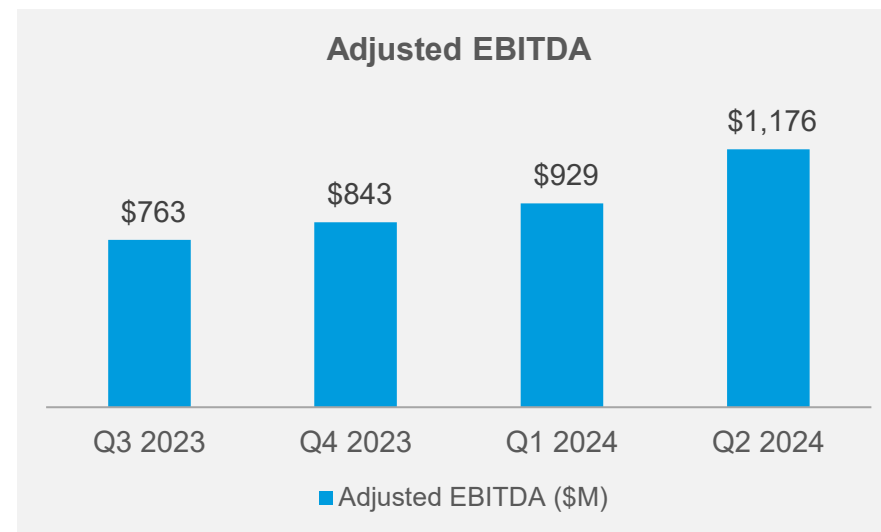
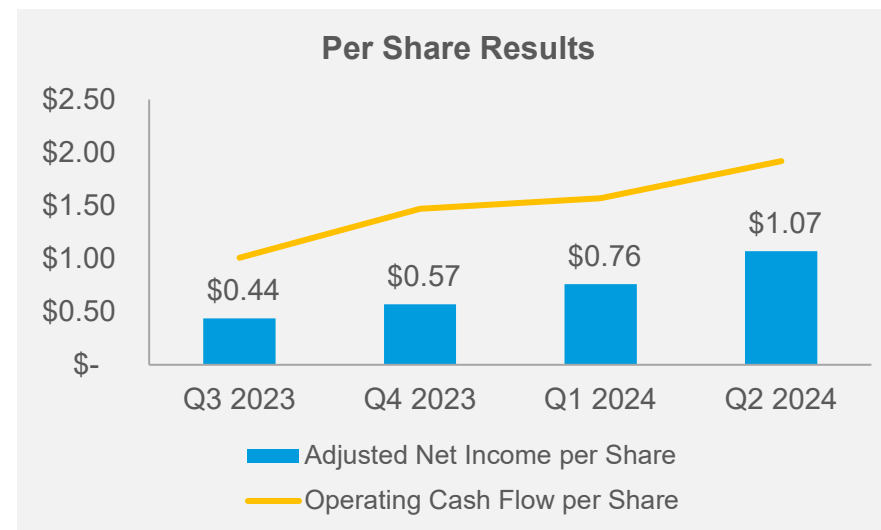
- In Q2 2024, gold production was led by strong performance at Canadian Malartic, LaRonde and Fosterville
- Continued focus on cost control and optimization with total cash costs<sup>1</sup> at \$870/oz and AISC<sup>1</sup> at \$1,169/oz in Q2 2024

<sup>1</sup> These are non-GAAP measures, see *Notes to Investors Regarding Certain Measures of Performance* in this presentation

# Q2 2024 Financial Highlights

## Third Consecutive Quarter of Record Free Cash Flow

	Q2 2024	Q2 2023	Q2 2024 YTD	Q2 2023 YTD
Realized Gold Price <sup>1</sup> (\$/oz)	\$ 2,342	\$ 1,975	\$ 2,202	\$ 1,935
Gold Sales (koz)	874	859	1,753	1,646
(in millions)				
Revenues	\$ 2,077	\$ 1,718	\$ 3,906	\$ 3,228
Net Income	\$ 472	\$ 324	\$ 819	\$ 2,141
Adjusted Net Income <sup>2</sup>	\$ 535	\$ 319	\$ 913	\$ 591
EBITDA <sup>2</sup>	\$ 1,123	\$ 883	\$ 2,006	\$ 3,156
Adjusted EBITDA <sup>2</sup>	\$ 1,176	\$ 885	\$ 2,105	\$ 1,626
Cash Provided by Operating Activities	\$ 961	\$ 722	\$ 1,745	\$ 1,372
Capital Expenditures <sup>2,3</sup>	\$ 407	\$ 416	\$ 779	\$ 758
Free Cash Flow <sup>2</sup>	\$ 557	\$ 298	\$ 953	\$ 563
(basic shares outstanding)				
Net Income per share	\$ 0.95	\$ 0.66	\$ 1.64	\$ 4.45
Adjusted Net Income per share <sup>2</sup>	\$ 1.07	\$ 0.65	\$ 1.83	\$ 1.23
Cash Provided by Operating Activities per share <sup>2</sup>	\$ 1.92	\$ 1.46	\$ 3.50	\$ 2.85



<sup>1</sup> Realized gold price is calculated as gold revenues from mining operations divided by the number of ounces sold

<sup>2</sup> These are non-GAAP measures, see *Notes to Investors Regarding Certain Measures of Performance* in this presentation

<sup>3</sup> Includes capitalized exploration



**ESG**





## 2023 Sustainability Report Highlights:



➤ **Record safety performance** – 34% improvement year-over-year



➤ **Addressing climate change and working towards net-zero by 2050** – Decarbonization approach defined, focusing on energy efficiency, technology transition and increased renewable energy. The Company continues to be one of the most GHG efficient gold mining companies



➤ **Investing in communities** – Donated and sponsored ~\$16M to local organizations in the regions the Company operates and spent \$1.9B on local goods and services, of which \$1B went to Indigenous businesses



➤ **Mining responsibly** – Committed to contributing to sustainable development of the regions in which we operate as an active participant in recognized international sustainability frameworks



➤ **Being a great place to work** – Delivered over 443,000 hours of training to employees, with 66% of our workforce being locally employed



### Climate Highlights

**100%**

Of mining operations GHG intensity is under the industry average<sup>1</sup>

**1.34M**

Total tonnes of CO<sub>2</sub>e produced by our operations

**41**

Number of battery electric vehicles across the organization

### Environmental Highlights

**0**

Significant environmental incidents

**70k**

Plants planted as part of restoration efforts in Mexico

**58M m<sup>3</sup>**

Recycled water across the Company's operations

### Social Highlights

**649**

Indigenous employees at our operations

**36%**

Of board of directors are women

**3,200**

Hours of cultural awareness training

<sup>1</sup> Industry average for 2022 was 0.829 tCO<sub>2</sub> per ounce of gold produced as reported by S&P Global

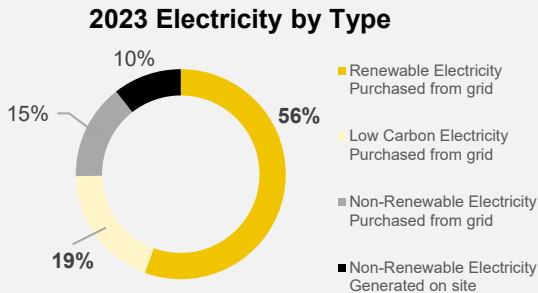
# Continued Focus on ESG and Optimization Initiatives



## Innovation and Electrification

- LTE-4G & LTE-5 networks
- Automated mucking
- Rail-Veyor®
- Battery electric vehicles
- Monitoring Operation Centres

**75%** of electricity consumed from low carbon sources

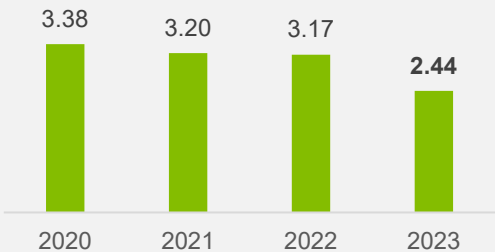


## Environment

- Filtered tailings deposition
- In-pit tailings disposal
- Improved water treatment processes
- Manitou partnership
- Lapa rehabilitation

**71%** of water recycled

**Total Freshwater Withdrawn for Use Intensity (m<sup>3</sup> of water per oz Au)**



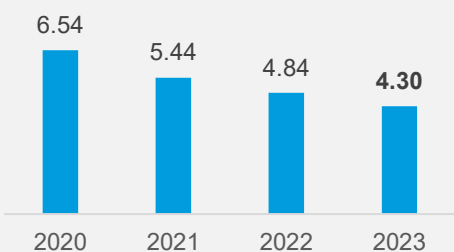
## People & Safety

- Towards zero accidents
- Mine rescue
- Health and Wellness
- Retention and development

**\$1.16B** in wages and benefits to employees

**66%** local employment

**Total Recordable Injury Frequency per 1M hours worked**



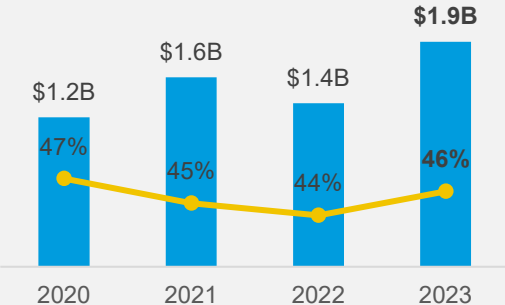
## Communities

- Community relations and satisfaction
- Indigenous rights and relationships

**200** employees, external stakeholders and rightsholders consulted to inform the development of our Reconciliation Action Plan

**\$1B** In purchases with Indigenous Suppliers

**Spending on Local Suppliers**





Strengthening Community Resilience and Emergency Response

- Meliadine mine and the Rankin Inlet Fire Department forge a mutual aid partnership
- Fosterville’s Bushfire Readiness Grants programs supports local Fire Brigades with crucial infrastructure upgrades and new equipment



Optimizing Environmental Infrastructure and Management

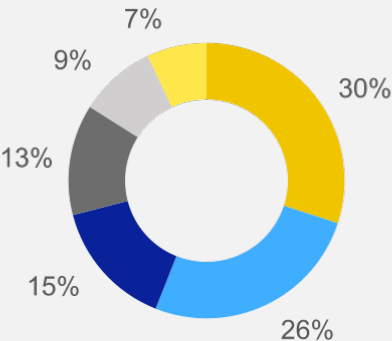
- Inauguration of nitrogen removal plant at Kittilä
- Transition to Filtered Tailings Management at LaRonde
- Developed equipment ‘Nilas’ at Meliadine to reduce dust emissions



Preserving Biodiversity

- Innovative approach to bat conservation in historic mine sites
- Seed collection campaigns
- Caribou tracking and monitoring
- Community partnership in Australia to rehabilitate and enhance a creek through riparian rehabilitation and native fish enhancement works

Community Investment Highlights



- Economic Development
- Health
- Culture
- Promotion & Sponsorship
- Education Funding
- Sports

**\$1.5M**  
Investment in construction of new Health Centre for Matachewan First Nation

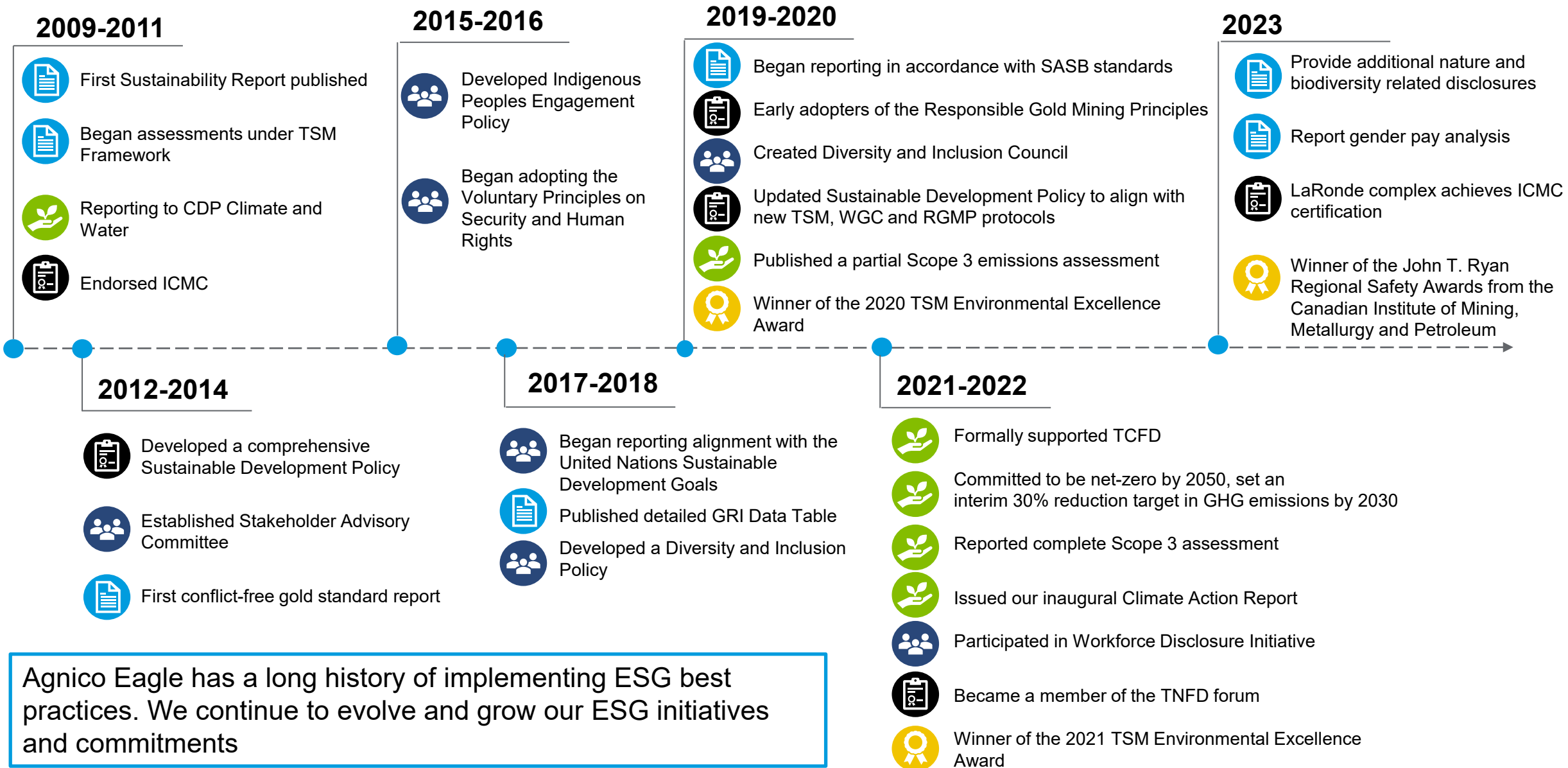
**\$3.7M**  
Investment in Inunnguiniq project (Arctic Rose Foundation, Iliataqiniq, and Breakfast Club of Canada)

**\$9.6M**  
In multi-year commitments to support Cancer Research and Care

**1,254**  
Educational scholarships provided in Mexico



# A History of Transparency and Leadership in ESG



# ESG: A Core Building Block of Agnico Eagle’s Strategy

Deliver on our Vision to Build a Growing, High-Quality, Low Risk, Sustainable Business

Recognized for our leading industry practices in ESG by independent research agencies

Rating Agency	Ranking Scale	2024/2023	2022	2021
MSCI Rating	Leader (AAA, AA); Average (A, BBB, BB); Laggard (B, CCC)	AA	AA	AA
Sustainalytics Risks	(40+ Severe Risk)	21.4	22.5	27.11
S&P Global CSA	Out of 100 (high is better)	53	49	46
Towards Sustainable Mining®	Individual indicators are scored ranging from Level C to Level AAA. Scores are externally verified every three year. Scores for years in-between verification are self-assessed. <sup>2</sup>	98% of indicators scored A or higher	99% of indicators scored A or higher	97% of indicators scored A or higher

## Our Sustainability Commitment:



### Operate a Safe and Healthy Workplace

We aim for a zero-accident record. We believe that if we all work together, we can achieve a zero-accident record, and enhance the wellbeing of employees, contractors, and communities.



### Respect for Environment

We aim to minimize the impact of our operations on the environment and to preserve its viability and diversity.



### Respect for Employees

We aim to maintain a safe and healthy workplace where all people interact in a spirit of collaboration, commitment and excellence.



### Respect for Communities

We aim to contribute to the sustainable social and economic development of the communities associated with our activities.

ESG ratings and rankings are subject to change, either based on Agnico Eagle’s performance, or relative sector rankings and/or ratings agency scoring changes and updates. Scores and rankings shown here are effective as of April 17th, 2024.



# **Mineral Reserves and Mineral Resources**





# Upper Beaver – June 30, 2024 Gold Mineral Reserves and Mineral Resources<sup>1</sup>

		Mineral Reserves	Mineral Resources									
As at June 30, 2024		Proven & Probable	Indicated					Inferred				
Mineralized Zone	Mining Method <sup>2</sup>	000 oz Au	000 Tonnes	g/t	000 oz Au	Cu %	000 t Cu	000 Tonnes	g/t	000 oz Au	Cu %	000 t Cu
Upper Beaver	O/P	–	3,326	1.85	198	0.14	5	–	–	–	–	–
Upper Beaver	U/G	–	27,550	3.66	3,242	0.24	66	2,959	4.13	393	0.36	11
<b>Upper Beaver Total</b>		<b>–</b>	<b>30,876</b>	<b>3.47</b>	<b>3,440</b>	<b>0.23</b>	<b>71</b>	<b>2,959</b>	<b>4.13</b>	<b>393</b>	<b>0.36</b>	<b>11</b>

The assumptions used for the mineral resource estimate as at June 30, 2024, were US\$1,750 per ounce of gold, US\$4.00 per pound of copper, an exchange rate of CAD\$1.35 per US\$1.00 and Metallurgical Recoveries of 95% for gold and 83% for copper.

Open pit mineral resources as at June 30, 2024, are reported at a Net Smelter Value cut-off not less than C\$43.49/t.

Underground mineral resources as at June 30, 2024, are reported at a Net Smelter Value cut-off not less than C\$118.17/t.

Mineral reserve and mineral resource estimates for the Upper Beaver project have been approved by Dyane Duquette, P.Geo., Vice-President, Mineral Resources Management, who is a "Qualified Person" for the purposes of NI 43-101.

The forecast parameters surrounding the internal evaluation at the Upper Beaver project were based on a preliminary economic assessment, which is preliminary in nature and includes inferred mineral resources that are too speculative geologically to have economic considerations applied to them that would enable them to be categorized as mineral reserves and there is no certainty that the forecast production amounts or other outcomes will be realized. The basis for the preliminary economic assessment and the qualifications and assumptions made by the qualified persons who undertook the preliminary economic assessment are set out in the AEM July 31, 2024 news release. The impact of the results of the preliminary economic assessment on the results of any pre-feasibility or feasibility study in respect of Upper Beaver are described in the Appendix under "MRMR update for Upper Beaver gold-copper project" in the AEM July 31, 2024 news release.

<sup>1</sup> See AEM July 31, 2024 news release for further details on the mineral reserves and mineral resources for Upper Beaver as at June 30, 2024

<sup>2</sup> Open Pit ("O/P"), Underground ("U/G")

# Detour Lake – March 31, 2024 Gold Mineral Reserves and Mineral Resources<sup>1</sup>

## Mineral Reserves as at March 31, 2024

Mineralized Zone		Proven			Probable			Proven & Probable			
Gold	Mining Method <sup>2</sup>	000 Tonnes	g/t	000 oz Au	000 Tonnes	g/t	000 oz Au	000 Tonnes	g/t	000 oz Au	Recovery % <sup>3</sup>
Detour Lake (above 0.5 g/t)	O/P	71,477	1.13	2,593	467,151	0.90	13,563	538,629	0.93	16,156	91.9
Detour Lake (below 0.5 g/t)	O/P	50,174	0.42	684	229,819	0.38	2,832	279,993	0.39	3,516	90.0
<b>Detour Lake Total<sup>4</sup></b>		<b>121,651</b>	<b>0.84</b>	<b>3,277</b>	<b>696,970</b>	<b>0.73</b>	<b>16,395</b>	<b>818,621</b>	<b>0.75</b>	<b>19,672</b>	

## Mineral Resources as at March 31, 2024

Mineralized Zone		Measured			Indicated			Measured & Indicated			Inferred		
Gold	Mining Method <sup>2</sup>	000 Tonnes	g/t	000 oz Au	000 Tonnes	g/t	000 oz Au	000 Tonnes	g/t	000 oz Au	000 Tonnes	g/t	000 oz Au
Detour Lake	O/P	35,586	1.08	1,235	620,524	0.57	11,412	656,110	0.60	12,647	78,647	1.52	3,850
Detour Lake	U/G	—	—	—	10,008	2.02	652	10,008	2.02	652	56,809	2.04	3,718
Detour Lake zone 58N	U/G	—	—	—	2,868	5.80	534	2,868	5.80	534	973	4.35	136
<b>Detour Lake Total</b>		<b>35,586</b>	<b>1.08</b>	<b>1,235</b>	<b>633,400</b>	<b>0.62</b>	<b>12,598</b>	<b>668,985</b>	<b>0.64</b>	<b>13,833</b>	<b>136,430</b>	<b>1.76</b>	<b>7,704</b>

<sup>1</sup> See AEM June 19, 2024 news release for further details on the mineral reserves and mineral resources for Detour Lake as at March 31, 2024

<sup>2</sup> Open Pit ("O/P"), Underground ("U/G")

<sup>3</sup> Represents metallurgical recovery percentage

<sup>4</sup> Gold cut-off grades: Detour Lake O/P Mineral Reserves is 0.30 g/t; Detour Lake O/P Mineral Resources is 0.25 g/t; U/G Mineral Resources is 1.22 g/t

# Detour Lake – Notes to Investors Regarding the Use of Mineral Resources

Mineral reserves were estimated using a gold price of US\$1,400/oz and a CAD/USD exchange rate of 1.30. The mineral reserves for Detour Lake are based on a high cut-off grade of 0.50 g/t gold and a low cut-off grade of 0.30 g/t gold (unchanged from the year-end 2023 mineral reserve estimate).

Cut-off grades were calculated including the costs of mining, milling, general and administrative costs, royalties and capital expenditures and other modifying factors (e.g., dilution, mining extraction, mill recovery), and were also calculated using an optimized variable cut-off grade over time. Dilution is estimated at an average of 7%.

The mineral resources were estimated using a gold price of US\$1,650/oz and a CAD/USD exchange rate of 1.30 for Detour Lake; and a gold price of US\$1,300/oz and a CAD/USD exchange rate of 1.25 for zone 58N deposit.

The open pit mineral resources for Detour Lake are based on a cut-off grade of 0.25 g/t gold (versus 0.30 g/t gold for the year-end 2023 mineral resource estimate).

The underground mineral resources for Detour Lake are based on a cut-off grade of 1.22 g/t gold (unchanged versus the year-end 2023 mineral resource estimate) and reported in mineable shapes. Cut-off grades were calculated including the costs of mining, milling, general and administration, royalties and other modifying factors (e.g., dilution, mill recovery).

Mineral resources for zone 58N are based on a cut-off grade of 2.2 g/t gold with an assumed mining dilution of 12%.

Mineral reserve and mineral resource estimates for the Detour Lake mine have been approved by Dyane Duquette, P.Geo., Vice-President, Mineral Resources Management, who is a "Qualified Person" for the purposes of NI 43-101.

The above gold price assumptions are below the three-year historic average (from January 1, 2021 to December 31, 2023) of approximately \$1,853 per ounce of gold.

## **Additional Information**

Additional information about the Detour Lake mine including information regarding data verification, key assumptions, parameters and methods used to estimate mineral reserves and mineral resources and the risks that could materially affect the development of the mineral reserves and mineral resources required by sections 3.2 and 3.3 and paragraphs 3.4(a), (c) and (d) of NI 43-101 can be found in the Company's AIF and MD&A filed on SEDAR+ each of which forms a part of the Company's Form 40-F filed with the SEC on EDGAR and in the following technical report filed on SEDAR+: Detour Lake Operation, Ontario, Canada NI 43-101 Technical Report as at July 26, 2021 (October 15, 2021). The Company expects to file an updated NI 43-101 Technical Report on the Detour Lake mine in due course.



# 2023 Mineral Reserves and Mineral Resources\*

Mineral Reserves as at December 31, 2023												
Operation / Project			Proven			Probable			Proven & Probable			
Gold	Mining Method	AEM Share	000 Tonnes	g/t	000 Oz Au	000 Tonnes	g/t	000 Oz Au	000 Tonnes	g/t	000 Oz Au	Metallurgical Recovery (%)
LaRonde mine <sup>1</sup>	U/G	100%	2,342	4.98	375	8,568	6.79	1,870	10,910	6.40	2,244	94.7
LaRonde zone 5 <sup>2</sup>	U/G	100%	4,450	2.11	301	4,523	2.30	334	8,972	2.20	636	94.7
<b>LaRonde complex Total</b>			<b>6,791</b>	<b>3.10</b>	<b>676</b>	<b>13,091</b>	<b>5.24</b>	<b>2,204</b>	<b>19,882</b>	<b>4.51</b>	<b>2,880</b>	
Canadian Malartic <sup>3</sup>			45,474	0.58	852	45,332	1.09	1,584	90,806	0.83	2,436	89.0
East Gouldie <sup>4</sup>	U/G	100%	—	0.00	—	47,005	3.42	5,173	47,005	3.42	5,173	94.6
Odyssey deposits <sup>5</sup>	U/G	100%	17	2.25	1	4,422	2.17	308	4,440	2.17	310	95.3
<b>Canadian Malartic complex Total</b>			<b>45,491</b>	<b>0.58</b>	<b>853</b>	<b>96,760</b>	<b>2.27</b>	<b>7,065</b>	<b>142,251</b>	<b>1.73</b>	<b>7,919</b>	
Goldex <sup>6</sup>	U/G	100%	797	2.60	66	16,873	1.54	834	17,669	1.59	901	85.8
Akasaba West <sup>7</sup>	O/P	100%	203	0.84	5	4,823	0.89	138	5,025	0.89	143	77.1
<b>Quebec Total</b>			<b>53,282</b>	<b>0.93</b>	<b>1,601</b>	<b>131,546</b>	<b>2.42</b>	<b>10,242</b>	<b>184,828</b>	<b>1.99</b>	<b>11,843</b>	
**Detour Lake (Above 0.5 g/t)	O/P	100%	70,048	1.14	2,565	484,633	0.90	14,029	554,681	0.93	16,594	91.9
**Detour Lake (Below 0.5 g/t)	O/P	100%	48,656	0.43	666	215,712	0.38	2,669	264,368	0.39	3,335	90.0
<b>**Detour Lake Total<sup>8</sup></b>			<b>118,703</b>	<b>0.85</b>	<b>3,230</b>	<b>700,346</b>	<b>0.74</b>	<b>16,698</b>	<b>819,049</b>	<b>0.76</b>	<b>19,928</b>	
Macassa mine <sup>9</sup>	U/G	100%	248	16.17	129	3,959	14.34	1,825	4,207	14.45	1,954	97.4
Macassa Near Surface <sup>10</sup>	U/G	100%	2	4.23	—	117	5.96	22	119	5.93	23	95.0
AK deposit <sup>11</sup>	U/G	100%	—	0.00	—	742	6.69	160	742	6.69	160	95.0
<b>Macassa Total</b>			<b>249</b>	<b>16.10</b>	<b>129</b>	<b>4,818</b>	<b>12.96</b>	<b>2,007</b>	<b>5,067</b>	<b>13.11</b>	<b>2,136</b>	
***Upper Beaver <sup>12</sup>	U/G	100%	—	0.00	—	7,992	5.43	1,395	7,992	5.43	1,395	95.0
Hammond Reef <sup>13</sup>	O/P	100%	—	0.00	—	123,473	0.84	3,323	123,473	0.84	3,323	89.2
<b>Ontario Total</b>			<b>118,952</b>	<b>0.88</b>	<b>3,359</b>	<b>836,629</b>	<b>0.87</b>	<b>23,424</b>	<b>955,581</b>	<b>0.87</b>	<b>26,783</b>	
Amaruq	O/P	100%	3,010	1.58	153	9,469	3.76	1,146	12,479	3.24	1,299	91.7
Amaruq	U/G	100%	49	5.96	9	2,829	5.81	528	2,878	5.81	538	91.7
<b>Meadowbank complex Total<sup>14</sup></b>			<b>3,059</b>	<b>1.65</b>	<b>162</b>	<b>12,298</b>	<b>4.23</b>	<b>1,674</b>	<b>15,357</b>	<b>3.72</b>	<b>1,837</b>	
Meliadine			266	4.27	37	4,632	4.46	664	4,898	4.45	700	94.7
Meliadine	U/G	100%	1,514	7.57	369	11,846	6.30	2,398	13,360	6.44	2,767	96.3
<b>Meliadine Total<sup>15</sup></b>			<b>1,780</b>	<b>7.08</b>	<b>405</b>	<b>16,478</b>	<b>5.78</b>	<b>3,062</b>	<b>18,258</b>	<b>5.91</b>	<b>3,467</b>	
Hope Bay <sup>16</sup>			93	6.77	20	16,123	6.51	3,377	16,216	6.52	3,397	87.5
<b>Nunavut Total</b>			<b>4,932</b>	<b>3.71</b>	<b>588</b>	<b>44,899</b>	<b>5.62</b>	<b>8,113</b>	<b>49,831</b>	<b>5.43</b>	<b>8,701</b>	
Fosterville <sup>17</sup>	U/G	100%	679	12.52	273	7,897	5.55	1,409	8,576	6.10	1,682	95.0
<b>Australia Total</b>			<b>679</b>	<b>12.52</b>	<b>273</b>	<b>7,897</b>	<b>5.55</b>	<b>1,409</b>	<b>8,576</b>	<b>6.10</b>	<b>1,682</b>	
Kittila <sup>18</sup>	U/G	100%	984	4.11	130	25,943	4.14	3,454	26,926	4.14	3,584	86.9
<b>Europe Total</b>			<b>984</b>	<b>4.11</b>	<b>130</b>	<b>25,943</b>	<b>4.14</b>	<b>3,454</b>	<b>26,926</b>	<b>4.14</b>	<b>3,584</b>	
Pinos Altos	O/P	100%	24	1.21	1	2,363	1.21	92	2,387	1.21	93	94.4
Pinos Altos	U/G	100%	2,386	2.14	164	4,150	2.17	290	6,536	2.16	454	94.2
<b>Pinos Altos Total<sup>19</sup></b>			<b>2,410</b>	<b>2.13</b>	<b>165</b>	<b>6,514</b>	<b>1.82</b>	<b>381</b>	<b>8,924</b>	<b>1.90</b>	<b>546</b>	
San Nicolás (50%) <sup>20</sup>	O/P	50%	23,858	0.41	314	28,761	0.39	358	52,619	0.40	672	17.6
<b>Mexico Total</b>			<b>26,268</b>	<b>0.57</b>	<b>479</b>	<b>35,275</b>	<b>0.65</b>	<b>739</b>	<b>61,543</b>	<b>0.62</b>	<b>1,219</b>	
<b>Total Gold</b>			<b>205,096</b>	<b>0.98</b>	<b>6,430</b>	<b>1,082,188</b>	<b>1.36</b>	<b>47,380</b>	<b>1,287,284</b>	<b>1.30</b>	<b>53,811</b>	

\* See AEM February 15, 2024 news release for further details on the mineral reserves and mineral resources as at December 31, 2023

\*\* See update on the mineral reserves and mineral resources 'Detour Lake – March 31, 2024 Gold Mineral Reserves and Mineral Resources' as at March 31, 2024

\*\*\* See update on the mineral reserves and mineral resources 'Upper Beaver – June 30, 2024 Gold Mineral Reserves and Mineral Resources' as at June 30, 2024

# 2023 Mineral Reserves and Mineral Resources

Mineral Reserves as at December 31, 2023												
Operation / Project			Proven			Probable			Proven & Probable			
Silver	Mining Method*	AEM Share	000 Tonnes	g/t	000 Oz Ag	000 Tonnes	g/t	000 Oz Ag	000 Tonnes	g/t	000 Oz Ag	Metallurgical Recovery (%)
LaRonde	U/G	100%	2,342	14.32	1,078	8,568	21.60	5,950	10,910	20.04	7,028	74.9
Pinos Altos	O/P	100%	24	43.30	33	2,363	36.35	2,762	2,387	36.42	2,796	44.5
Pinos Altos	U/G	100%	2,386	40.03	3,070	4,150	47.41	6,326	6,536	44.71	9,396	49.3
<b>Pinos Altos Total</b>			<b>2,410</b>	<b>40.06</b>	<b>3,104</b>	<b>6,514</b>	<b>43.40</b>	<b>9,088</b>	<b>8,924</b>	<b>42.50</b>	<b>12,192</b>	
San Nicolás (50%)	O/P	50%	23,858	23.93	18,356	28,761	20.91	19,333	52,619	22.28	37,689	38.6
<b>Total Silver</b>			<b>28,609</b>	<b>24.50</b>	<b>22,538</b>	<b>43,843</b>	<b>24.38</b>	<b>34,371</b>	<b>72,453</b>	<b>24.43</b>	<b>56,909</b>	
Copper	Mining Method*	AEM Share	000 Tonnes	%	Tonnes Cu	000 Tonnes	%	Tonnes Cu	000 Tonnes	%	Tonnes Cu	Metallurgical Recovery (%)
LaRonde	U/G	100%	2,342	0.19	4,558	8,568	0.30	25,341	10,910	0.27	29,899	83.6
Akasaba West	O/P	100%	203	0.44	890	4,823	0.50	24,262	5,025	0.50	25,153	83.6
Upper Beaver	U/G	100%	—	—	—	7,992	0.25	19,980	7,992	0.25	19,980	90.0
San Nicolás (50%)	O/P	50%	23,858	1.26	299,809	28,761	1.01	291,721	52,619	1.12	591,530	78.2
<b>Total Copper</b>			<b>26,402</b>	<b>1.16</b>	<b>305,258</b>	<b>50,144</b>	<b>0.72</b>	<b>361,305</b>	<b>76,546</b>	<b>0.87</b>	<b>666,562</b>	
Zinc	Mining Method*	AEM Share	000 Tonnes	%	Tonnes Zn	000 Tonnes	%	Tonnes Zn	000 Tonnes	%	Tonnes Zn	Metallurgical Recovery (%)
LaRonde	U/G	100%	2,342	0.62	14,424	8,568	1.08	92,164	10,910	0.98	106,588	69.2
San Nicolás (50%)	O/P	50%	23,858	1.61	383,313	28,761	1.37	394,115	52,619	1.48	777,428	80.9
<b>Total Zinc</b>			<b>26,199</b>	<b>1.52</b>	<b>397,736</b>	<b>37,330</b>	<b>1.30</b>	<b>486,280</b>	<b>63,529</b>	<b>1.39</b>	<b>884,016</b>	

\*Underground ("U/G"), Open Pit ("O/P")

1 LaRonde mine: Net smelter value cut-off varies according to mining type and depth, not less than C\$91/t for LP1 and not less than C\$192/t for Laronde.

2 LaRonde zone 5: Gold cut-off grade varies according to stope size and depth, not less than 1.56 g/t.

3 Canadian Malartic: Gold cut-off grade not less than 0.34 g/t for Barnat pit.

4 East Gouldie: Gold cut-off grade not less than 1.67 g/t.

5 Odyssey deposits: Gold cut-off grade varies according to mining zone and depth, not less than 1.53 g/t.

6 Goldex: Gold cut-off grade varies according to mining type and depth, not less than 1.00 g/t.

7 Akasaba West: Net smelter value cut-off varies, not less than C\$33/t.

8 Detour Lake: Gold cut-off grade not less than 0.30 g/t.

9 Macassa mine: Gold cut-off grade varies according to mining type, not less than 3.71 g/t for long hole method and 4.41 g/t for cut and fill method.

10 Macassa Near Surface: Gold cut-off grade not less than 4.33 g/t.

11 Amalgamated Kirkland (AK) deposit: Gold cut-off grade not less than 4.25 g/t.

12 Upper Beaver: Net smelter value cut-off not less than C\$125/t.

13 Hammond Reef: Gold cut-off grade not less than 0.41 g/t.

14 Amaruq: Gold cut-off grade varies according to mining type, not less than 1.14 g/t for open pit mineral reserves and 3.42 g/t for underground mineral reserves (gold cut-off grade for marginal underground mineral reserves from development is 1.14 g/t).

15 Meliadine: Gold cut-off grade varies according to mining type, not less than 1.80 g/t for open pit mineral reserves and 4.40 g/t for underground mineral reserves (gold cut-off grade for marginal underground mineral reserves from development is 1.80 g/t).

16 Hope Bay: Gold cut-off grade not less than 4.00 g/t.

17 Fosterville: Gold cut-off grade varies according to mining zone and type, not less than 3.80 g/t.

18 Kittila: Gold cut-off grade varies according to haulage distance, not less than 2.59 g/t.

19 Pinos Altos: Net smelter value cut-off varies according to mining zone and type, not less than C\$9.33/t for open pit mineral reserves and US\$49.93/t for the underground mineral reserves.

20 San Nicolás (50%): Net smelter return cut-off values for low zinc/copper ore of US\$9.71/t and for high zinc/copper ore of US\$13.15/t.

# 2023 Mineral Reserves and Mineral Resources

Mineral Resources as at December 31, 2023														
Operation / Project			Measured			Indicated			Measured & Indicated			Inferred		
Gold	Mining Method	AEM Share	000 Tonnes	g/t	000 Oz Au	000 Tonnes	g/t	000 Oz Au	000 Tonnes	g/t	000 Oz Au	000 Tonnes	g/t	000 Oz Au
LaRonde	U/G	100%	—	—	—	6,424	3.06	632	6,424	3.06	632	1,569	5.67	286
LaRonde zone 5	U/G	100%	—	—	—	10,594	2.27	774	10,594	2.27	774	10,437	3.38	1,134
<b>LaRonde complex Total</b>			<b>—</b>	<b>—</b>	<b>—</b>	<b>17,018</b>	<b>2.57</b>	<b>1,407</b>	<b>17,018</b>	<b>2.57</b>	<b>1,407</b>	<b>12,006</b>	<b>3.68</b>	<b>1,420</b>
Canadian Malartic	O/P	100%	—	—	—	—	—	—	—	—	—	8,171	0.81	214
Odyssey	U/G	100%	—	—	—	1,372	1.71	75	1,372	1.71	75	19,700	2.29	1,453
East Malartic	U/G	100%	—	—	—	11,134	2.04	731	11,134	2.04	731	65,748	2.12	4,480
East Gouldie	U/G	100%	—	—	—	4,853	1.56	244	4,853	1.56	244	45,239	2.29	3,331
<b>Odyssey Project Total</b>			<b>—</b>	<b>—</b>	<b>—</b>	<b>17,358</b>	<b>1.88</b>	<b>1,050</b>	<b>17,358</b>	<b>1.88</b>	<b>1,050</b>	<b>130,687</b>	<b>2.20</b>	<b>9,263</b>
<b>Canadian Malartic Total</b>			<b>—</b>	<b>—</b>	<b>—</b>	<b>17,358</b>	<b>1.88</b>	<b>1,050</b>	<b>17,358</b>	<b>1.88</b>	<b>1,050</b>	<b>138,858</b>	<b>2.12</b>	<b>9,477</b>
Goldex	U/G	100%	12,360	1.86	739	18,837	1.50	907	31,197	1.64	1,646	16,154	1.68	871
Akasaba West	O/P	100%	—	—	—	4,044	0.70	91	4,044	0.70	91	—	—	—
Wasamac	U/G	100%	—	—	—	27,850	2.43	2,173	27,850	2.43	2,173	9,232	2.66	789
<b>Quebec Total</b>			<b>12,360</b>	<b>1.86</b>	<b>739</b>	<b>85,109</b>	<b>2.06</b>	<b>5,628</b>	<b>97,468</b>	<b>2.03</b>	<b>6,367</b>	<b>176,249</b>	<b>2.22</b>	<b>12,558</b>
*Detour Lake	O/P	100%	30,861	1.45	1,434	697,821	0.74	16,520	728,681	0.77	17,955	58,317	0.62	1,156
*Detour Lake	U/G	100%	—	—	—	—	0.00	—	—	0.00	—	21,811	2.23	1,561
*Detour Lake zone 58N	U/G	100%	—	—	—	2,868	5.80	534	2,868	5.80	534	973	4.35	136
<b>*Detour Lake Total</b>			<b>30,861</b>	<b>1.45</b>	<b>1,434</b>	<b>700,688</b>	<b>0.76</b>	<b>17,055</b>	<b>731,549</b>	<b>0.79</b>	<b>18,489</b>	<b>81,101</b>	<b>1.09</b>	<b>2,853</b>
Macassa	U/G	100%	258	10.32	86	1,910	8.35	512	2,168	8.58	598	3,692	9.21	1,094
Macassa Near Surface	U/G	100%	—	—	—	65	6.14	13	65	6.14	13	133	6.62	28
AK Project	U/G	100%	—	—	—	163	6.95	37	163	6.95	37	282	5.69	52
<b>Macassa Total</b>			<b>258</b>	<b>10.32</b>	<b>86</b>	<b>2,138</b>	<b>8.17</b>	<b>562</b>	<b>2,396</b>	<b>8.40</b>	<b>647</b>	<b>4,106</b>	<b>8.89</b>	<b>1,173</b>
Aquarius	O/P	100%	—	—	—	23,112	1.49	1,106	23,112	1.49	1,106	502	0.87	14
Holt complex	U/G	100%	5,806	4.29	800	5,884	4.75	898	11,690	4.52	1,699	9,097	4.48	1,310
Anoki-McBean	U/G	100%	—	—	—	3,919	2.77	349	3,919	2.77	349	867	3.84	107
**Upper Beaver	U/G	100%	—	—	—	3,636	3.45	403	3,636	3.45	403	8,688	5.07	1,416
Upper Canada	O/P	100%	—	—	—	2,006	1.62	104	2,006	1.62	104	1,020	1.44	47
Upper Canada	U/G	100%	—	—	—	8,433	2.28	618	8,433	2.28	618	17,588	3.21	1,816
<b>Upper Canada Total</b>			<b>—</b>	<b>—</b>	<b>—</b>	<b>10,439</b>	<b>2.15</b>	<b>722</b>	<b>10,439</b>	<b>2.15</b>	<b>722</b>	<b>18,608</b>	<b>3.11</b>	<b>1,863</b>
Hammond Reef	O/P	100%	47,063	0.54	819	86,304	0.53	1,478	133,367	0.54	2,298	—	—	—
<b>Ontario Total</b>			<b>83,988</b>	<b>1.16</b>	<b>3,140</b>	<b>836,119</b>	<b>0.84</b>	<b>22,574</b>	<b>920,107</b>	<b>0.87</b>	<b>25,713</b>	<b>122,968</b>	<b>2.21</b>	<b>8,736</b>
Amaruq	O/P	100%	—	—	—	4,758	2.62	401	4,758	2.62	401	236	2.87	22
Amaruq	U/G	100%	—	—	—	8,544	4.37	1,199	8,544	4.37	1,199	3,938	4.75	602
<b>Amaruq Total</b>			<b>—</b>	<b>—</b>	<b>—</b>	<b>13,302</b>	<b>3.74</b>	<b>1,600</b>	<b>13,302</b>	<b>3.74</b>	<b>1,600</b>	<b>4,173</b>	<b>4.65</b>	<b>623</b>
<b>Meadowbank complex Total</b>			<b>—</b>	<b>—</b>	<b>—</b>	<b>13,302</b>	<b>3.74</b>	<b>1,600</b>	<b>13,302</b>	<b>3.74</b>	<b>1,600</b>	<b>4,173</b>	<b>4.65</b>	<b>623</b>
Meliadine	O/P	100%	3	3.17	—	4,613	3.14	466	4,615	3.14	466	1,135	4.45	162
Meliadine	U/G	100%	422	4.64	63	7,626	4.49	1,100	8,047	4.49	1,163	9,986	6.42	2,060
<b>Meliadine Total</b>			<b>424</b>	<b>4.63</b>	<b>63</b>	<b>12,238</b>	<b>3.98</b>	<b>1,566</b>	<b>12,663</b>	<b>4.00</b>	<b>1,629</b>	<b>11,120</b>	<b>6.22</b>	<b>2,222</b>
Hope Bay	U/G	100%	—	—	—	10,734	3.64	1,255	10,734	3.64	1,255	12,110	5.41	2,108
<b>Nunavut Total</b>			<b>424</b>	<b>4.63</b>	<b>63</b>	<b>36,274</b>	<b>3.79</b>	<b>4,421</b>	<b>36,699</b>	<b>3.80</b>	<b>4,485</b>	<b>27,404</b>	<b>5.62</b>	<b>4,953</b>
Fosterville	O/P	100%	820	2.81	74	1,771	3.87	220	2,591	3.53	294	326	2.72	29
Fosterville	U/G	100%	262	3.99	34	8,758	4.20	1,184	9,019	4.20	1,218	9,693	4.60	1,433
<b>Fosterville Total</b>			<b>1,082</b>	<b>3.10</b>	<b>108</b>	<b>10,528</b>	<b>4.15</b>	<b>1,404</b>	<b>11,610</b>	<b>4.05</b>	<b>1,512</b>	<b>10,019</b>	<b>4.54</b>	<b>1,461</b>
Northern Territory	O/P	100%	269	3.65	32	16,416	1.42	749	16,685	1.46	781	13,536	1.75	762
Northern Territory	U/G	100%	—	—	—	5,115	5.39	887	5,115	5.39	887	4,284	4.45	613
<b>Northern Territory Total</b>			<b>269</b>	<b>3.65</b>	<b>32</b>	<b>21,531</b>	<b>2.36</b>	<b>1,636</b>	<b>21,800</b>	<b>2.38</b>	<b>1,668</b>	<b>17,820</b>	<b>2.40</b>	<b>1,376</b>
<b>Australia Total</b>			<b>1,351</b>	<b>3.21</b>	<b>139</b>	<b>32,059</b>	<b>2.95</b>	<b>3,040</b>	<b>33,410</b>	<b>2.96</b>	<b>3,180</b>	<b>27,839</b>	<b>3.17</b>	<b>2,837</b>
Kittila	O/P	100%	—	—	—	—	—	—	—	—	—	373	3.89	47
Kittila	U/G	100%	4,299	2.91	402	13,632	2.93	1,285	17,931	2.93	1,687	6,192	5.13	1,020
<b>Kittila Total</b>			<b>4,299</b>	<b>2.91</b>	<b>402</b>	<b>13,632</b>	<b>2.93</b>	<b>1,285</b>	<b>17,931</b>	<b>2.93</b>	<b>1,687</b>	<b>6,565</b>	<b>5.06</b>	<b>1,067</b>
Barsele	O/P	55%	—	—	—	3,178	1.08	111	3,178	1.08	111	2,260	1.25	91
Barsele	U/G	55%	—	—	—	1,158	1.77	66	1,158	1.77	66	13,552	2.10	914
<b>Barsele Total</b>			<b>—</b>	<b>—</b>	<b>—</b>	<b>4,335</b>	<b>1.27</b>	<b>176</b>	<b>4,335</b>	<b>1.27</b>	<b>176</b>	<b>15,811</b>	<b>1.98</b>	<b>1,005</b>
<b>Europe Total</b>			<b>4,299</b>	<b>2.91</b>	<b>402</b>	<b>17,967</b>	<b>2.53</b>	<b>1,461</b>	<b>22,266</b>	<b>2.60</b>	<b>1,863</b>	<b>22,376</b>	<b>2.88</b>	<b>2,072</b>

\* See update on the mineral reserves and mineral resources 'Detour Lake – March 31, 2024 Gold Mineral Reserves and Mineral Resources' as at March 31, 2024

\*\* See update on the mineral reserves and mineral resources 'Upper Beaver – June 30, 2024 Gold Mineral Reserves and Mineral Resources' as at June 30, 2024



# 2023 Mineral Reserves and Mineral Resources

Mineral Resources as at December 31, 2023														
Operation / Project			Measured			Indicated			Measured & Indicated			Inferred		
Gold	Mining Method*	AEM Share	000 Tonnes	g/t	000 Oz Au	000 Tonnes	g/t	000 Oz Au	000 Tonnes	g/t	000 Oz Au	000 Tonnes	g/t	000 Oz Au
Pinos Altos	O/P	100%	—	—	—	1,266	1.03	42	1,266	1.03	42	445	1.27	18
Pinos Altos	U/G	100%	—	—	—	10,394	1.92	643	10,394	1.92	643	1,431	1.87	86
Pinos Altos Total			—	—	—	11,659	1.83	685	11,659	1.83	685	1,876	1.73	104
La India	O/P	100%	4,478	0.52	74	814	0.54	14	5,292	0.52	88	66	0.40	1
San Nicolás (50%)	O/P	50%	261	0.08	1	3,037	0.20	19	3,297	0.19	20	2,468	0.13	10
Tarachi	O/P	100%	—	—	—	19,290	0.58	361	19,290	0.58	361	242	0.52	4
Chipriona	O/P	100%	—	—	—	10,983	0.92	326	10,983	0.92	326	976	0.66	21
El Barqueño Gold	O/P	100%	—	—	—	8,834	1.16	331	8,834	1.16	331	9,628	1.13	351
Santa Gertrudis	O/P	100%	—	—	—	19,267	0.91	563	19,267	0.91	563	9,819	1.36	429
Santa Gertrudis	U/G	100%	—	—	—	—	—	—	—	—	—	9,079	3.44	1,004
Santa Gertrudis Total			—	—	—	19,267	0.91	563	19,267	0.91	563	18,898	2.36	1,433
Total Mexico			4,739	0.49	75	73,884	0.97	2,299	78,623	0.94	2,373	34,154	1.75	1,923
Total Gold			107,161	1.32	4,558	1,081,412	1.13	39,423	1,188,573	1.15	43,981	410,990	2.50	33,080
Silver	Mining Method*	AEM Share	000 Tonnes	g/t	000 Oz Ag	000 Tonnes	g/t	000 Oz Ag	000 Tonnes	g/t	000 Oz Ag	000 Tonnes	g/t	000 Oz Ag
LaRonde	U/G	100%	—	—	—	6,424	11.98	2,474	6,424	11.98	2,474	1,569	12.25	618
Pinos Altos	O/P	100%	—	—	—	1,266	21.60	879	1,266	21.60	879	445	31.74	454
Pinos Altos	U/G	100%	—	—	—	10,394	50.99	17,040	10,394	50.99	17,040	1,431	36.19	1,665
Pinos Altos Total			—	—	—	11,659	47.80	17,919	11,659	47.80	17,919	1,876	35.13	2,120
La India	O/P	100%	4,478	2.72	391	814	2.61	68	5,292	2.70	460	66	2.18	5
San Nicolás (50%)	O/P	50%	261	6.40	54	3,037	11.86	1,158	3,297	11.43	1,211	2,468	9.26	735
Chipriona	O/P	100%	—	—	—	10,983	100.72	35,566	10,983	100.72	35,566	976	86.77	2,722
El Barqueño Silver	O/P	100%	—	—	—	—	—	—	—	—	—	4,393	124.06	17,523
El Barqueño Gold	O/P	100%	—	—	—	8,834	4.73	1,343	8,834	4.73	1,343	9,628	16.86	5,218
Santa Gertrudis	O/P	100%	—	—	—	19,267	3.66	2,269	19,267	3.66	2,269	9,819	1.85	585
Santa Gertrudis	U/G	100%	—	—	—	—	—	—	—	—	—	9,079	23.31	6,803
Santa Gertrudis Total			—	—	—	19,267	3.66	2,269	19,267	3.66	2,269	18,898	12.16	7,389
Total Silver			4,739	2.92	445	61,018	30.99	60,796	65,757	28.97	61,240	39,874	28.34	36,328
Copper	Mining Method*	AEM Share	000 Tonnes	%	Tonnes Cu	000 Tonnes	%	Tonnes Cu	000 Tonnes	%	Tonnes Cu	000 Tonnes	%	Tonnes Cu
LaRonde	U/G	100%	—	—	—	6,424	0.13	8,613	6,424	0.13	8,613	1,569	0.28	4,371
Akasaba West	O/P	100%	—	—	—	4,044	0.43	17,270	4,044	0.43	17,270	—	—	—
Upper Beaver	U/G	100%	—	—	—	3,636	0.14	5,135	3,636	0.14	5,135	8,688	0.20	17,284
San Nicolás (50%)	O/P	50%	261	1.35	3,526	3,037	1.17	35,489	3,297	1.18	39,015	2,468	0.94	23,144
Chipriona	O/P	100%	—	—	—	10,983	0.16	17,291	10,983	0.16	17,291	976	0.12	1,174
El Barqueño Gold	O/P	100%	—	—	—	8,834	0.19	16,400	8,834	0.19	16,400	9,628	0.22	21,152
El Barqueño Silver	O/P	100%	—	—	—	—	—	—	—	—	—	4,393	0.04	1,854
Total Copper			261	1.35	3,526	36,958	0.27	100,198	37,218	0.28	103,724	27,721	0.25	68,980
Zinc	Mining Method*	AEM Share	000 Tonnes	%	Tonnes Zn	000 Tonnes	%	Tonnes Zn	000 Tonnes	%	Tonnes Zn	000 Tonnes	%	Tonnes Zn
LaRonde	U/G	100%	—	—	—	6,424	0.74	47,404	6,424	0.74	47,404	1,569	0.36	5,600
San Nicolás (50%)	O/P	50%	261	0.39	1,012	3,037	0.71	21,618	3,297	0.69	22,630	2,468	0.62	15,355
Chipriona	O/P	100%	—	—	—	10,983	0.83	91,637	10,983	0.83	91,637	976	0.73	7,073
Total Zinc			261	0.39	1,012	20,444	0.79	160,659	20,704	0.78	161,671	5,012	0.56	28,029

\*Underground ("U/G"), Open Pit ("O/P")



# Notes to Investors Regarding the Use of Mineral Resources

The mineral reserve and mineral resource estimates contained in this presentation have been prepared in accordance with the Canadian securities administrators' (the "CSA") National Instrument 43-101 – Standards of Disclosure for Mineral Projects ("NI 43-101").

In 2019, the SEC's disclosure requirements and policies for mining properties were amended to more closely align with current industry and global regulatory practices and standards, including NI 43-101. However, Canadian issuers that report in the United States using the Multijurisdictional Disclosure System ("MJDS"), such as the Company, may still use NI 43-101 rather than the SEC disclosure requirements when using the SEC's MJDS registration statement and annual report forms. Accordingly, mineral reserve and mineral resource information contained in this presentation may not be comparable to similar information disclosed by U.S. companies.

Investors are cautioned that while the SEC recognizes "measured mineral resources", "indicated mineral resources" and "inferred mineral resources", investors should not assume that any part or all of the mineral deposits in these categories will ever be converted into a higher category of mineral resources or into mineral reserves. These terms have a great amount of uncertainty as to their economic and legal feasibility. **Accordingly, investors are cautioned not to assume that any "measured mineral resources", "indicated mineral resources", or "inferred mineral resources" that the Company reports in this presentation are or will be economically or legally mineable.** Under Canadian regulations, estimates of inferred mineral resources may not form the basis of feasibility or pre-feasibility studies, except in limited circumstances.

Further, "inferred mineral resources" have a great amount of uncertainty as to their existence and as to their economic and legal feasibility. It cannot be assumed that any part or all of an inferred mineral resource will ever be upgraded to a higher category.

The mineral reserve and mineral resource data set out in this presentation are estimates, and no assurance can be given that the anticipated tonnages and grades will be achieved or that the indicated level of recovery will be realized. The Company does not include equivalent gold ounces for by-product metals contained in mineral reserves in its calculation of contained ounces. Mineral reserves are not reported as a subset of mineral resources.

## Scientific and Technical Information

The scientific and technical information contained in this presentation relating to Nunavut, Quebec and Finland operations has been approved by Dominique Girard, Eng., Executive Vice-President & Chief Operating Officer – Nunavut, Quebec & Europe; relating to Ontario, Australia and Mexico operations has been approved by Natasha Vaz, Executive Vice-President & Chief Operating Officer – Ontario, Australia & Mexico; relating to exploration has been approved by Guy Gosselin, Eng. and P.Geo., Executive Vice-President, Exploration; and relating to mineral reserves and mineral resources has been approved by Dyane Duquette, P.Geo., Vice-President, Mineral Resources Management, each of whom is a "Qualified Person" for the purposes of NI 43-101.

Mineral reserves are reported exclusive of mineral resources. Tonnage amounts and contained metal amounts set out in this table have been rounded to the nearest thousand, so may not aggregate to equal column totals. Mineral reserves are *in-situ*, taking into account all mining recoveries, before mill or heap leach recoveries. Underground mineral reserves and measured and indicated mineral resources are reported within mineable shapes and include internal and external dilution. Inferred mineral resources are reported within mineable shapes and include internal dilution. Mineable shape optimization parameters may differ for mineral reserves and mineral resources.

The mineral reserves and mineral resources tonnages reported for silver, copper and zinc are a subset of the mineral reserves and mineral resources tonnages for gold. The Company's economic parameters set the maximum price allowed to be no more than the lesser of the three-year moving average and current spot price, which is a common industry standard. Given the current commodity price environment, Agnico Eagle continues to use more conservative gold and silver prices.

The below metal price assumptions are below the three-year historic average (from January 1, 2021 to December 31, 2023) of approximately \$1,853 per ounce of gold, \$23.50 per ounce of silver, \$4.03 per pound of copper and \$1.38 per pound of zinc.

Metal Price for Mineral Reserve Estimation <sup>1</sup>			
Gold (US\$/oz)	Silver (US\$/oz)	Copper (US\$/lb)	Zinc (US\$/lb)
\$1,400	\$18.00	\$3.50	\$1.00

Exchange rates <sup>2</sup>			
C\$ per US\$1.00	Mexican peso per US\$1.00	AUD per US\$1.00	EURO per US\$1.00
CAD1.30	MXP18.00	AUD1.36	€0.909

<sup>2</sup> Exceptions: exchange rate of CAD\$1.25 per US\$1.00 used for Upper Beaver, Upper Canada, Holt complex and Detour Lake zone 58N; CAD\$1.11 per US\$1.00 used for Aquarius; US\$1.15 per €1.00 used for Barsele; and MXP17.00 per US\$1.00 used for Tarachi.

Mines / Projects	Metal Price for Mineral Resource Estimation <sup>3</sup>			
	Gold (US\$/oz)	Silver (US\$/oz)	Copper (US\$/lb)	Zinc (US\$/lb)
Operating mines and pipeline projects	\$1,650	\$22.50	\$3.75	\$1.25

<sup>3</sup> Exceptions: US\$1,500 per ounce of gold used for Detour Lake open pit, Northern Territory and Holt complex; US\$1,300 per ounce of gold used for Detour Lake zone 58N; US\$1,400 per ounce of gold used for Canadian Malartic, US\$1,688 per ounce of gold used for Hope Bay, Santa Gertrudis and Hammond Reef; US\$1,667 per ounce of gold used for Upper Canada and El Barqueño; US\$1,200 per ounce of gold and US\$2.75 per pound of copper used for Upper Beaver; US\$1,533 per ounce of gold used for Barsele; US\$500 per ounce of gold used for Aquarius, US\$22.67 per ounce of silver used for El Barqueño; US\$1,687 per ounce of gold used for Anoki-McBean and Tarachi; US\$25.00 per ounce of silver used for Santa Gertrudis; US\$1,300 per ounce of gold, US\$20.00 per ounce of silver, US\$3.00 per pound of copper and US\$1.10 per pound of zinc used for San Nicolás.

# Notes to Investors Regarding the Use of Mineral Resources (continued)

NI 43-101 requires mining companies to disclose mineral reserves and mineral resources using the subcategories of "proven mineral reserves", "probable mineral reserves", "measured mineral resources", "indicated mineral resources" and "inferred mineral resources". Mineral resources that are not mineral reserves do not have demonstrated economic viability.

A mineral reserve is the economically mineable part of a measured and/or indicated mineral resource. It includes diluting materials and allowances for losses, which may occur when the material is mined or extracted and is defined by studies at pre-feasibility or feasibility level as appropriate that include application of modifying factors. Such studies demonstrate that, at the time of reporting, extraction could reasonably be justified. The mineral reserves presented in this presentation are separate from and not a portion of the mineral resources.

Modifying factors are considerations used to convert mineral resources to mineral reserves. These include, but are not restricted to, mining, processing, metallurgical, infrastructure, economic, marketing, legal, environmental, social and governmental factors.

A proven mineral reserve is the economically mineable part of a measured mineral resource. A proven mineral reserve implies a high degree of confidence in the modifying factors. A probable mineral reserve is the economically mineable part of an indicated and, in some circumstances, a measured mineral resource. The confidence in the modifying factors applied to a probable mineral reserve is lower than that applied to a proven mineral reserve.

A mineral resource is a concentration or occurrence of solid material of economic interest in or on the Earth's crust in such form, grade or quality and quantity that there are reasonable prospects for eventual economic extraction. The location, quantity, grade or quality, continuity and other geological characteristics of a mineral resource are known, estimated or interpreted from specific geological evidence and knowledge, including sampling.

A measured mineral resource is that part of a mineral resource for which quantity, grade or quality, densities, shape and physical characteristics are estimated with confidence sufficient to allow the application of modifying factors to support detailed mine planning and final evaluation of the economic viability of the deposit. Geological evidence is derived from detailed and reliable exploration, sampling and testing and is sufficient to confirm geological and grade or quality continuity between points of observation. An indicated mineral resource is that part of a mineral resource for which quantity, grade or quality, densities, shape and physical characteristics are estimated with sufficient confidence to allow the application of modifying factors in sufficient detail to support mine planning and evaluation of the economic viability of the deposit. Geological evidence is derived from adequately detailed and reliable exploration, sampling and testing and is sufficient to assume geological and grade or quality continuity between points of observation. An inferred mineral resource is that part of a mineral resource for which quantity and grade or quality are estimated on the basis of limited geological evidence and sampling. Geological evidence is sufficient to imply but not verify geological and grade or quality continuity.

**Investors are cautioned not to assume that part or all of an inferred mineral resource exists, or is economically or legally mineable.**

A feasibility study is a comprehensive technical and economic study of the selected development option for a mineral project that includes appropriately detailed assessments of applicable modifying factors, together with any other relevant operational factors and detailed financial analysis that are necessary to demonstrate, at the time of reporting, that extraction is reasonably justified (economically mineable). The results of the study may reasonably serve as the basis for a final decision by a proponent or financial institution to proceed with, or finance, the development of the project. The confidence level of the study will be higher than that of a pre-feasibility study.

## Additional Information

Additional information about each of the Company's material mineral projects as at December 31, 2023, including information regarding data verification, key assumptions, parameters and methods used to estimate mineral reserves and mineral resources and the risks that could materially affect the development of the mineral reserves and mineral resources required by sections 3.2 and 3.3 and paragraphs 3.4(a), (c) and (d) of NI 43-101 can be found in the Company's AIF and MD&A filed on SEDAR+ each of which forms a part of the Company's Form 40-F filed with the SEC on EDGAR and in the following technical reports filed on SEDAR+ in respect of the Company's material mineral properties: NI 43-101 Technical Report of the LaRonde complex in Québec, Canada (March 24, 2023); NI 43-101 Technical Report Canadian Malartic Mine, Québec, Canada (March 25, 2021); Technical Report on the Mineral Resources and Mineral Reserves at Meadowbank Gold complex including the Amaruq Satellite Mine Development, Nunavut, Canada as at December 31, 2017 (February 14, 2018); the Updated Technical Report on the Meliadine Gold Project, Nunavut, Canada (February 11, 2015); and the Detour Lake Operation, Ontario, Canada NI 43-101 Technical Report as at July 26, 2021 (October 15, 2021).



# Notes to Investors Regarding Certain Measures of Performance

---

This presentation discloses certain financial performance measures and ratios, including "total cash costs per ounce", "all-in sustaining costs per ounce", "adjusted net income", "adjusted net income per share", "EBITDA" which means earnings before interest, taxes, depreciation and amortization, "adjusted EBITDA", "free cash flow", "free cash flow before changes in non-cash working capital balances", "operating margin", "sustaining capital expenditures", "development capital expenditures" and "net debt", as well as, for certain of these measures their related per share ratios that are not standardized measures under IFRS. These measures may not be comparable to similar measures reported by other gold producers and should be considered together with other data prepared in accordance with IFRS. See the new release dated July 31, 2024 under the caption "Note Regarding Certain Measures of Performance" for a description of the composition and usefulness of these measures and a reconciliation of these measures to the most directly comparable financial information reported in the consolidated financial statements prepared in accordance with IFRS, which is incorporated by reference herein.

## **Note Regarding Production Guidance**

The gold production guidance is based on the Company's mineral reserves but includes contingencies and assumes metal prices and foreign exchange rates that are different from those used in the mineral reserve estimates. These factors and others mean that the gold production guidance presented in this presentation does not reconcile exactly with the production models used to support these mineral reserves.

## **Note Regarding Currency**

All amounts expressed in U.S. dollars unless otherwise noted.



**Trading Symbol:**  
AEM on TSX & NYSE

**Investor Relations:**  
416-947-1212  
[info@agnicoeagle.com](mailto:info@agnicoeagle.com)

[agnicoeagle.com](http://agnicoeagle.com)

